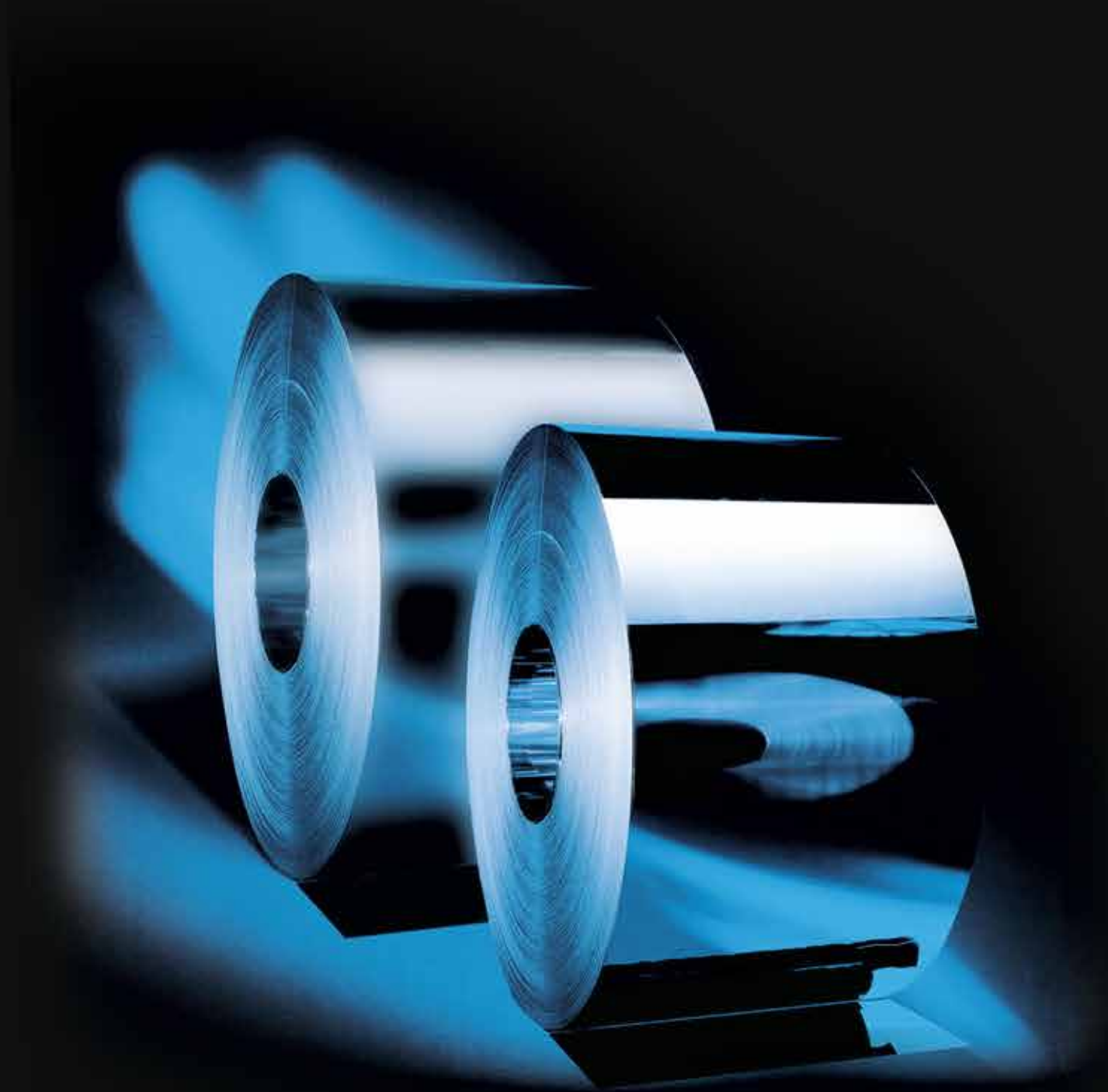




**KMC**  
STEEL & ROLL FORMING



**KMCGROUP**







## Cut to Length Lines

### Alcos Cold Rolled Cut To Length & Slitting Line

Min and Max thickness : 0.009 – 0.079 in  
Max coil width : 62.992 in  
Max coil weight : 66.138 lb



### Hot Rolled Cut To Length Line 4-18

Min and Max thickness : 0.157 – 0.708 in  
Max coil width : 62.992 in  
Max coil weight : 88.184 lb



### Hot Rolled Cut To Length Line 1-6

Min and Max thickness : 0.027 – 0.236 in  
Max coil width : 78.740 in  
Max coil weight : 77.161 lb



### Hot Rolled Cut To Length Line 1-4

Min and Max thickness : 0.039 – 0.157 in  
Max coil width : 59.055 in  
Max coil weight : 55.115 lb



### Cold Rolled Cut To Length Line Staps

Min and Max thickness : 0.011 – 0.079 in  
Max coil width : 62.992 in  
Max coil weight : 22.046 lb







## Cut to Length Lines

### Hot Rolled Cut To Length Line 15-50

Min and Max thickness : 0.590 – 1.968 in

Max coil width : 62.992 in

Max coil weight : 66.138 lb









## Slitting Lines

### Slitting Line - 1

Min and Max thickness : 0.020 – 0.157 in  
Max coil width : 84.646 in  
Max coil weight : 88.184 lb



### Slitting Line - 2

Min and Max thickness : 0.009 – 0.118 in  
Max coil width : 78.740 in  
Max coil weight : 55.115 lb



### Slitting Line - 3

Min and Max thickness : 0.012 – 0.118 in  
Max coil width : 62.992 in  
Max coil weight : 33.069 lb



### Slitting Line - 4

Min and Max thickness : 0.020 – 0.177 in  
Max coil width : 62.992 in  
Max coil weight : 61.729 lb









## Corrugated Line

### Trapeze Line

Min and Max thickness : 0.016 - 0.047 in  
Max coil width : 49.212 in  
Form : 27/200  
Max coil weight : 22.046 lb











## A large yellow gantry crane is positioned on a concrete pier, lifting a heavy, rectangular object from the deck of a ship. The crane's two long jibs extend upwards, supporting a central lifting mechanism. The ship's deck is visible in the foreground, with various equipment and structures. In the background, the sea and a distant shoreline are visible under a blue sky with scattered white clouds.

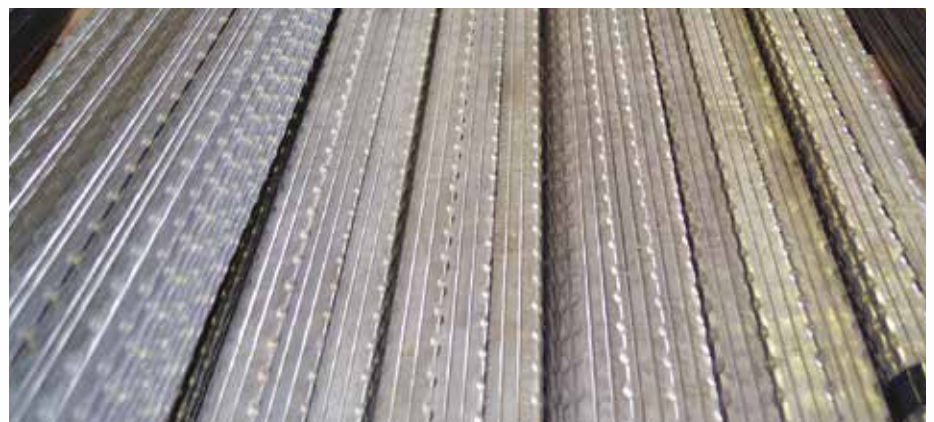
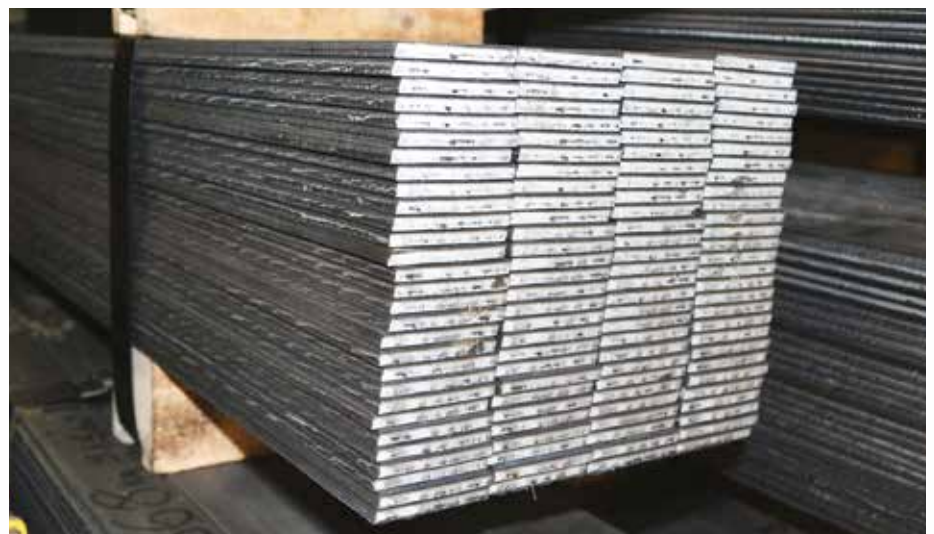






## Flat Bar - Wrought Iron Products

Min and Max. thickness: 0.098 - 0.590 in  
Min. and Max. width : 0.787 - 5.905 in





# PACKING

## Package Number - 1

In this packing form, all materials are wrapped with waterproof KMC logo papers and covered by metal envelope.

It is used for Cold rolled, Hot dip galvanised and other valuable products.

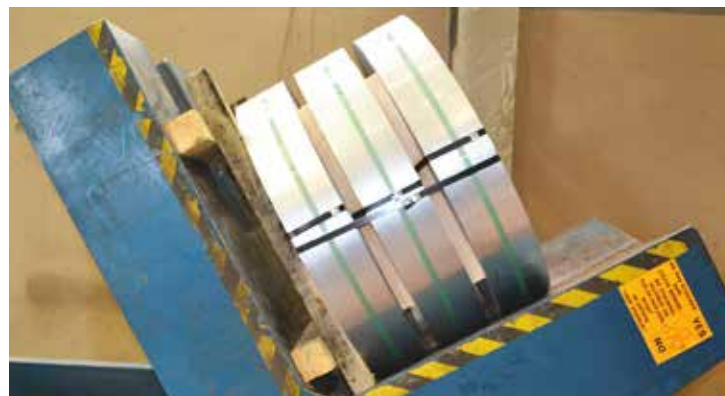


## Package Number - 2

Cold rolled P&O and Galvanised strips are packed with wooden sticks between the small coils.

Afterwards it is covered by waterproof paper and wrapped with steel hoops.

Then it is covered with hardboard carton outside in order to provide better protection against weather conditions







### Package Number - 3

Coils are packed with waterproof paper and wrapped with metal hoops.

Additionally, we use hardboard carton protection for cold rolled and galvanise materials.



### Package Number - 4

We use pallets up to 0.118" thickness and covered with waterproof paper up to 118.110" length. We use wood sticks for materials thicker than 0.118" and also be packed with waterproof paper up to 118.110" length sheets.







**KMC**  
STEEL SERVICE CENTER

**KMC**  
STEEL SERVICE CENTER

C0221201 B  
S-14





**KMC STEEL & ROLL FORMING LLC**

11417 Irving Park Rd (IL-19), Franklin Park, IL-60131-3882

T: 630 426 36 70

E: [info@kmcrollforming.com](mailto:info@kmcrollforming.com) - [sales@kmcrollforming.com](mailto:sales@kmcrollforming.com)

**[www.kmcrollforming.com](http://www.kmcrollforming.com)**