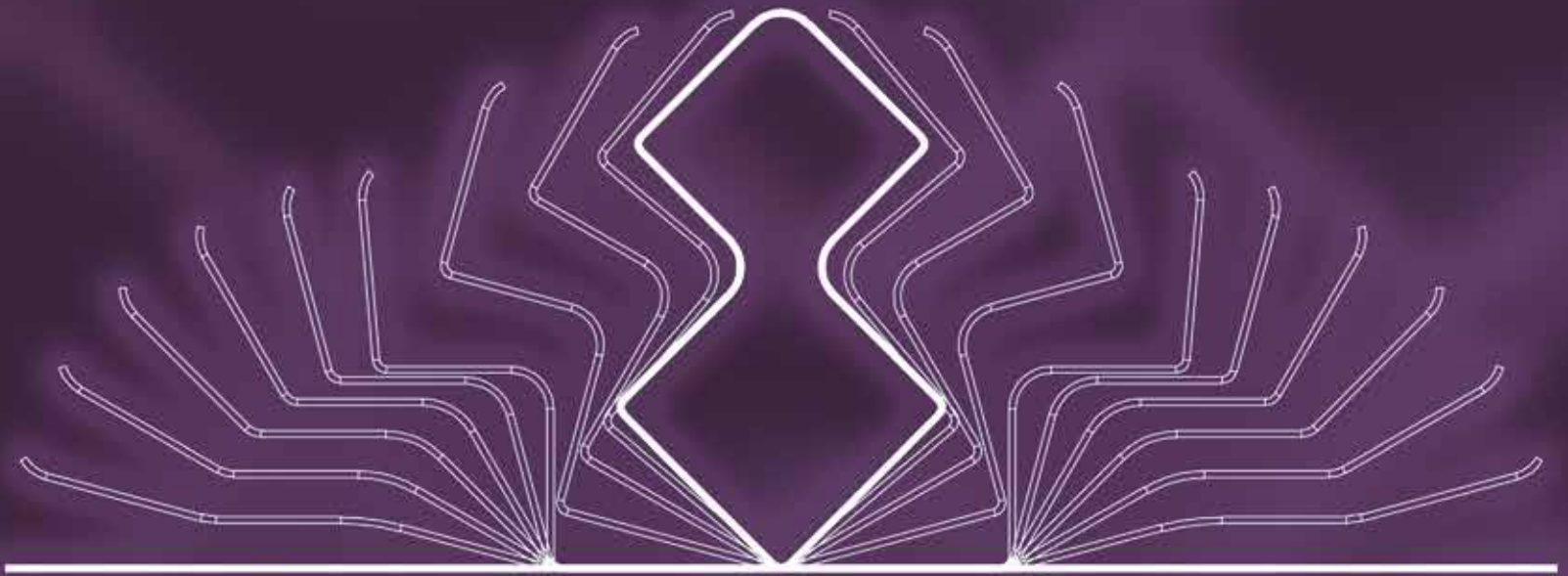




KMC
STEEL & ROLL FORMING

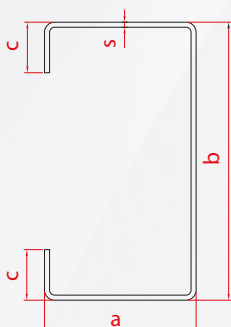
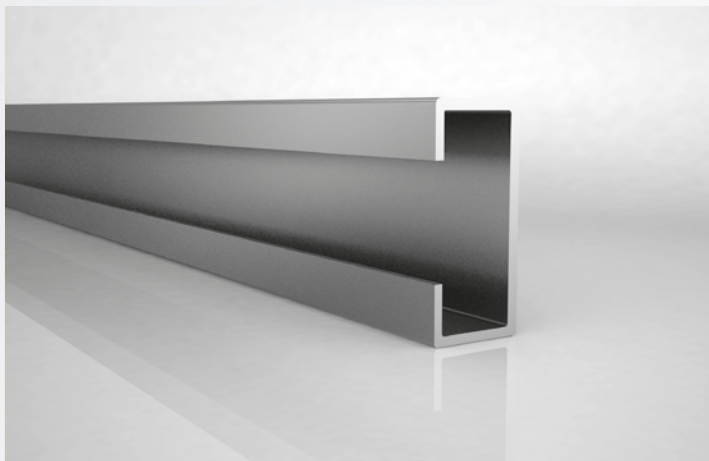


SPECIAL PROFILES

- C & U profiles
- Tubes and profiles in special cross-section,
- Air conditioning plant's construction profiles
- Profiles for furniture Industry
- Shelving profiles
- Conveyor profiles
- Roller blinds & awnings profiles
- Roller shutter profiles (octagonal shaped)

The design and production of our molds and fixtures that are used in every stage of the production are produced by our own experienced technical team. On special profiles punching, bending, edge reducing, edging, end cutting and similar requested applications can be performed to have them as semi and finished product.

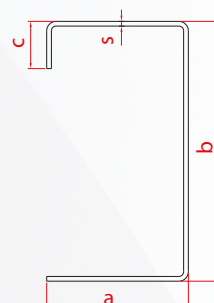
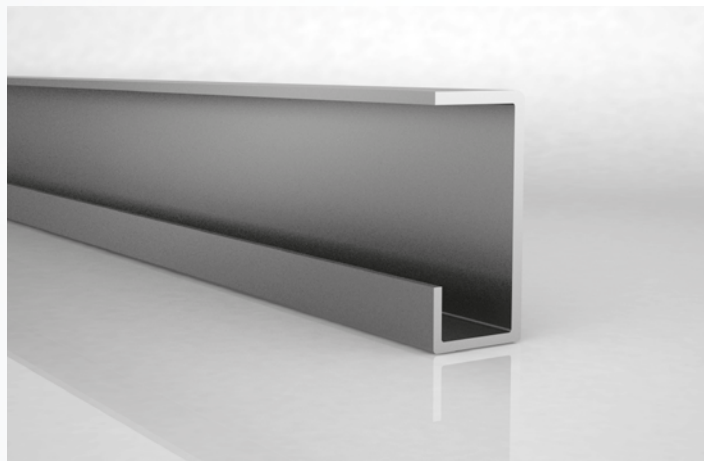
C PROFILES



Dimensions	A (in)	B (in)	C (in)	S (in)
Min.	0.197	0.394	0.394	0.020
Max.	9.646	19.685	5.906	0.315

All types of C profiles which their minimum and maximum measures are mentioned above are manufactured by our company.

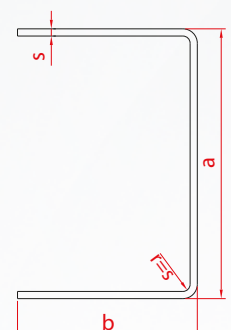
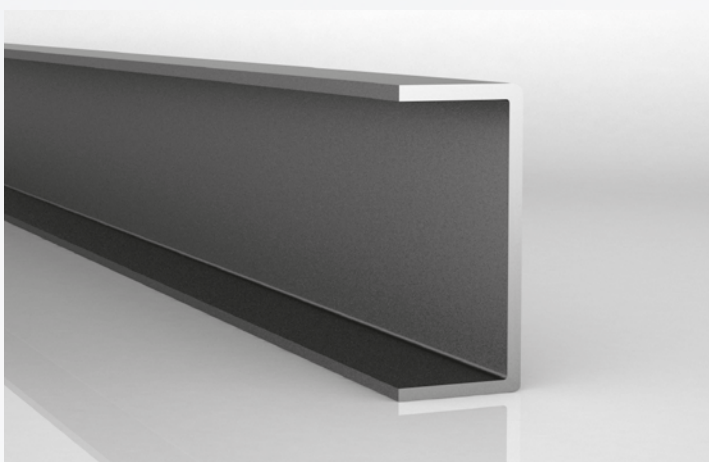
C PROFILES



Dimensions	A (in)	B (in)	C (in)	S (in)
Min.	0.197	0.394	0.394	0.020
Max.	9.646	19.685	5.906	0.315

All types of C profiles which their minimum and maximum measures are mentioned above are manufactured by our company.

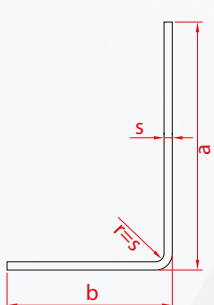
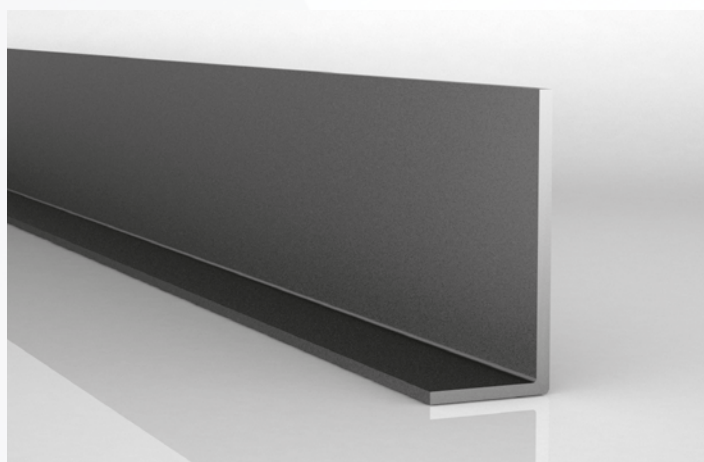
U PROFILES



Dimensions	A (in)	B (in)	S (in)
Min.	0.197	0.394	0.020
Max.	19.685	9.646	0.315

All types of U profiles which their minimum and maximum measures are mentioned above are manufactured by our company.

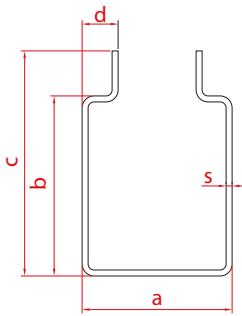
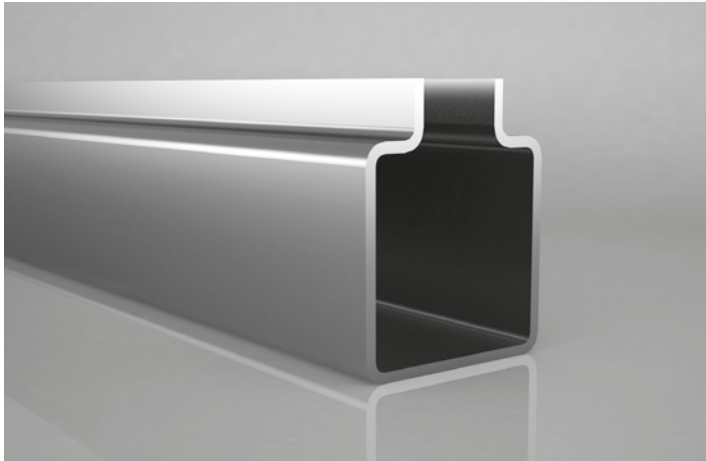
L PROFILES



Dimensions	A (in)	B (in)	S (in)
Min.	0.394	0.197	0.020
Max.	19.685	9.646	0.315

All types of L profiles which their minimum and maximum measures are mentioned above are manufactured by our company.

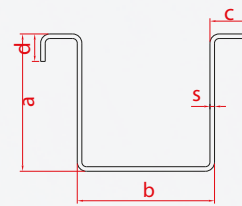
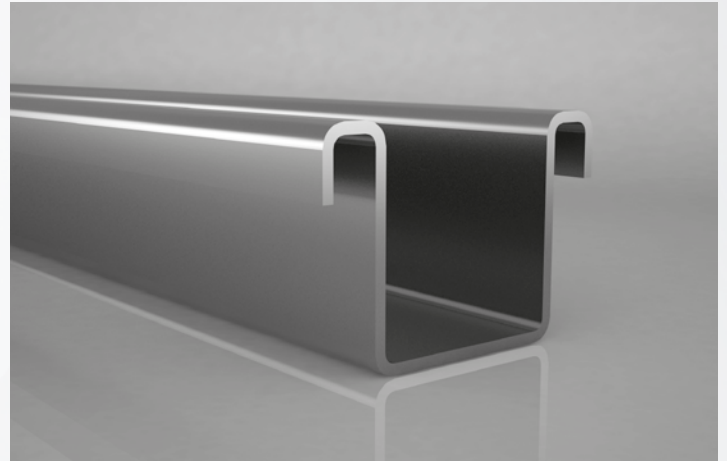
STANDARD OPEN SHAPED PROFILES



Dimensions	A (in)	B (in)	C (in)	D (in)	S (in)
Min.	1.181	1.181	2.165	0.315	0.020
Max.	15.748	9.055	9.646	5.906	0.315

All types of profiles which their minimum and maximum measures are mentioned above are manufactured by our company.

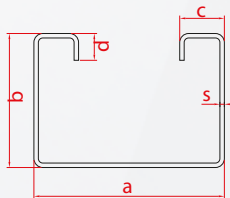
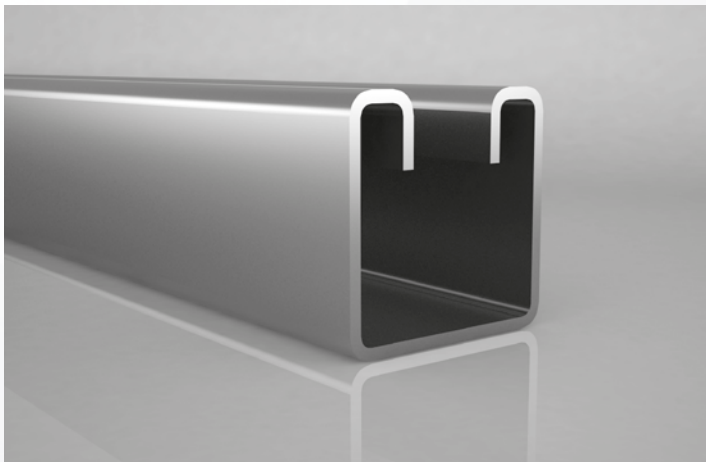
STANDARD OPEN SHAPED PROFILES



Dimensions	A (in)	B (in)	C (in)	D (in)	S (in)
Min.	0.787	0.787	0.394	0.197	0.020
Max.	15.748	9.646	3.937	1.969	0.315

All types of profiles which their minimum and maximum measures are mentioned above are manufactured by our company.

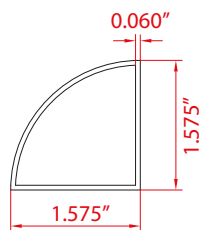
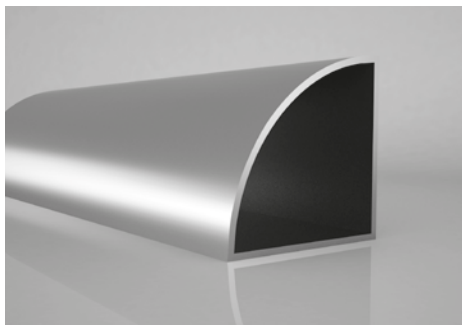
STANDARD OPEN SHAPED PROFILES



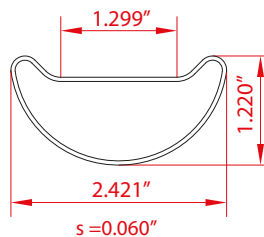
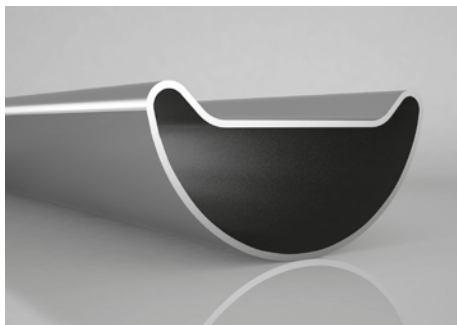
Dimensions	A (in)	B (in)	C (in)	D (in)	S (in)
Min.	0.787	0.787	0.394	0.197	0.020
Max.	15.748	9.646	3.937	1.969	0.315

All types of profiles which their minimum and maximum measures are mentioned above are manufactured by our company.

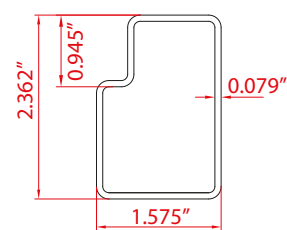
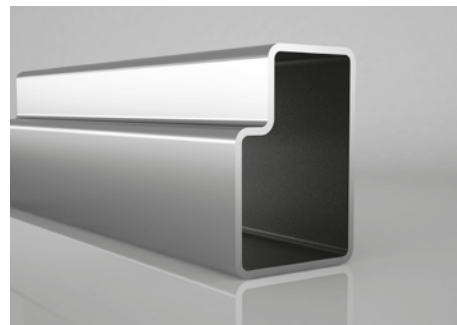




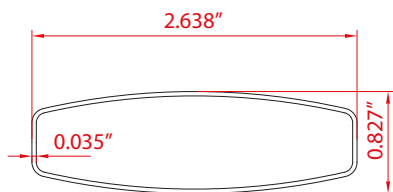
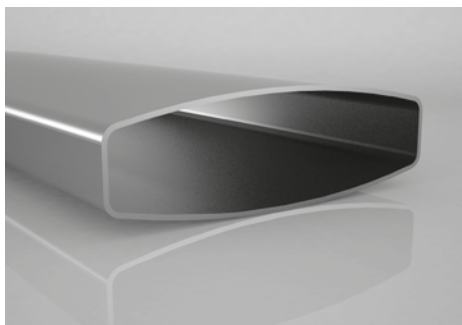
OZL-01



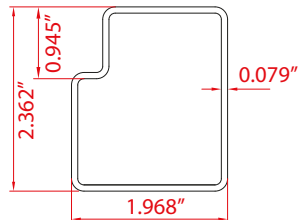
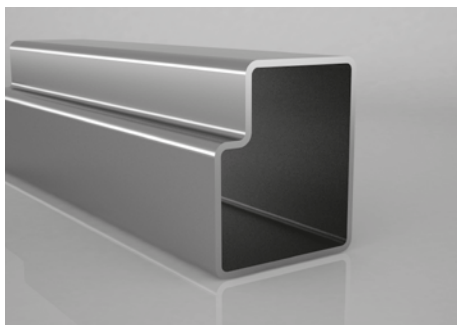
OZL-02



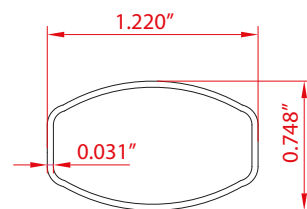
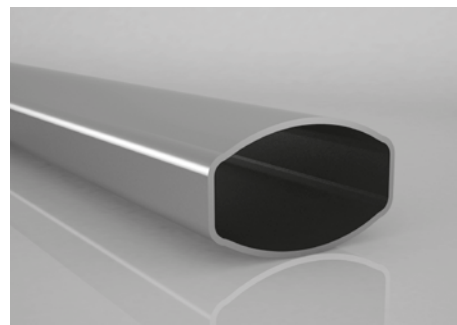
OZL-03



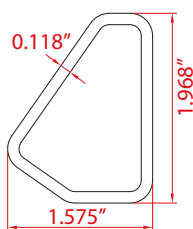
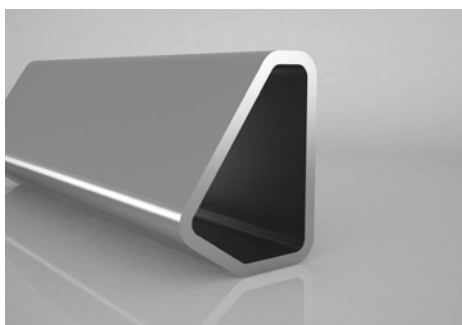
OZL-04



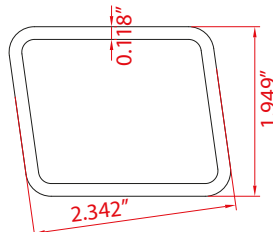
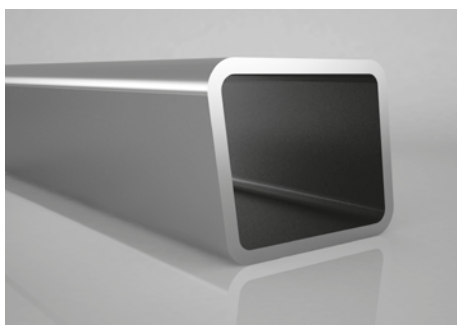
OZL-05



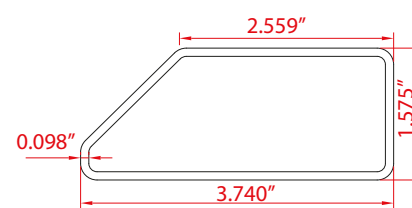
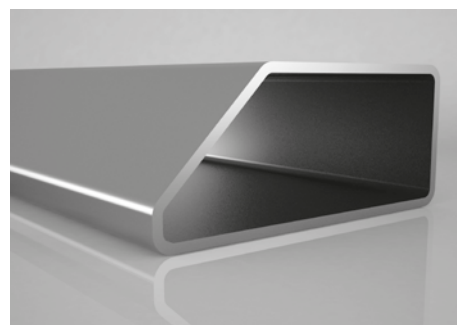
OZL-06



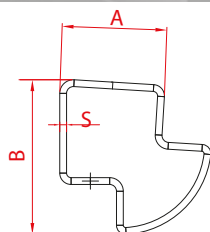
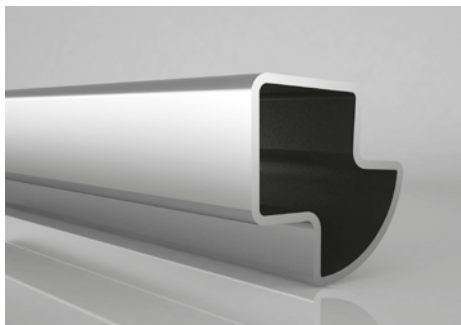
OZL-07



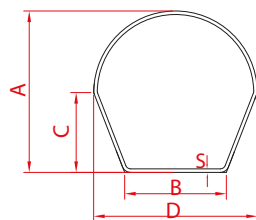
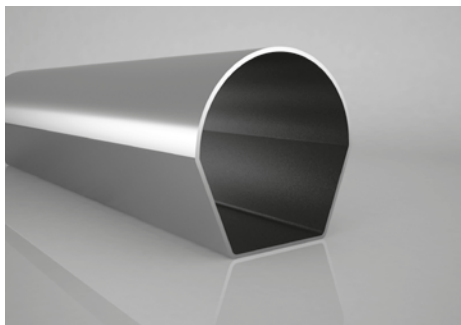
OZL-08



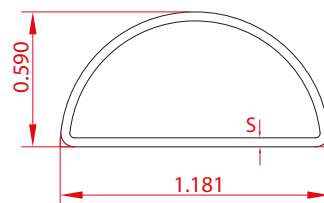
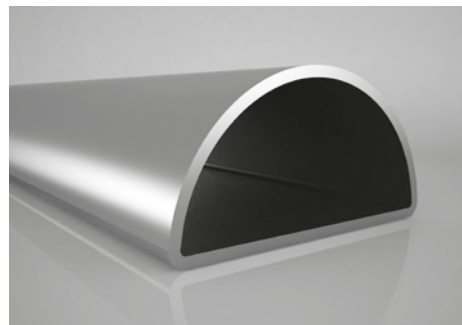
OZL-09



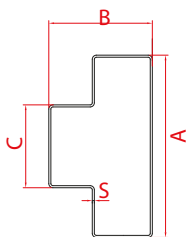
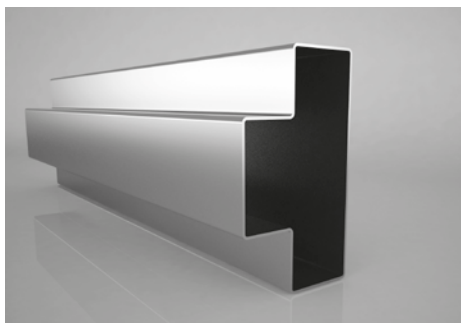
OZL-10



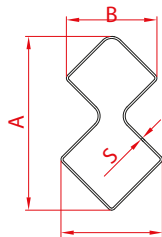
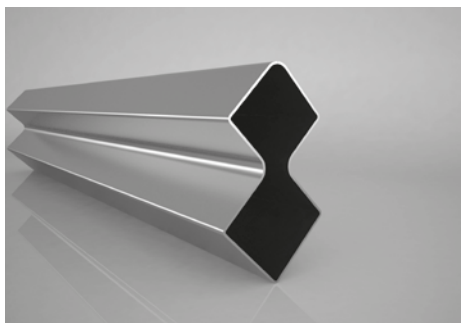
OZL-11



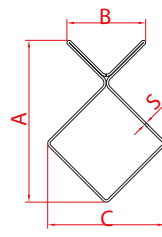
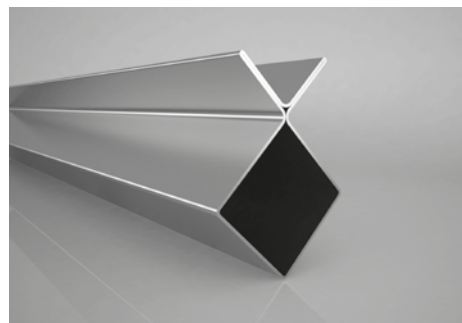
OZL-12



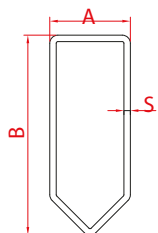
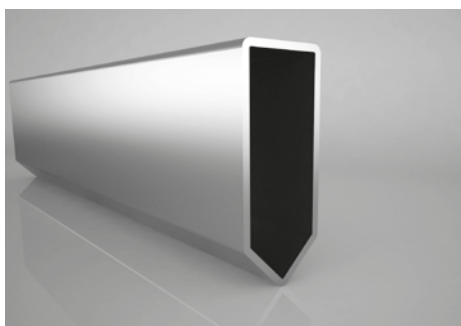
OZL-13



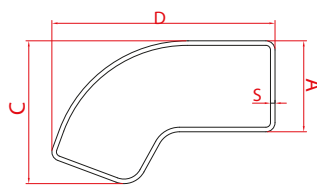
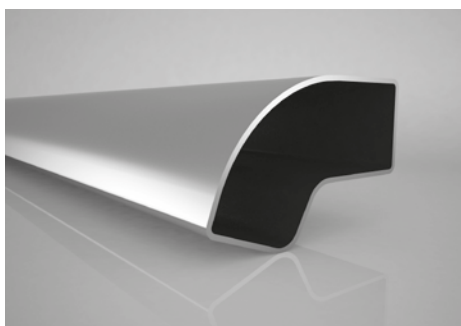
OZL-14



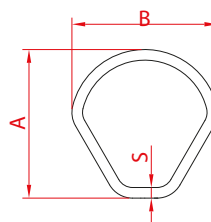
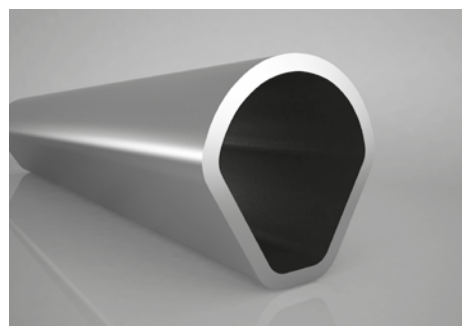
OZL-15



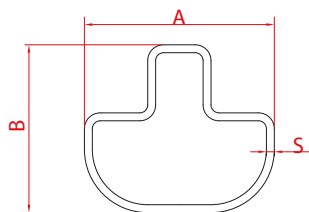
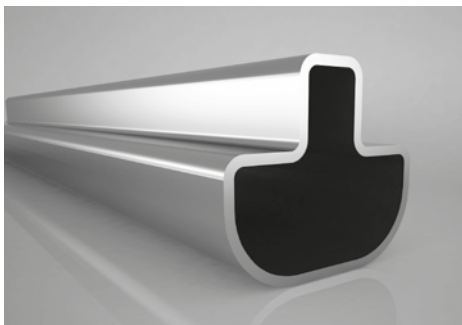
OZL-16



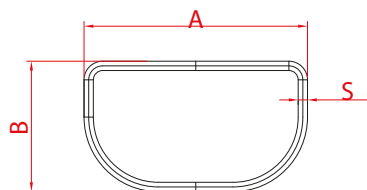
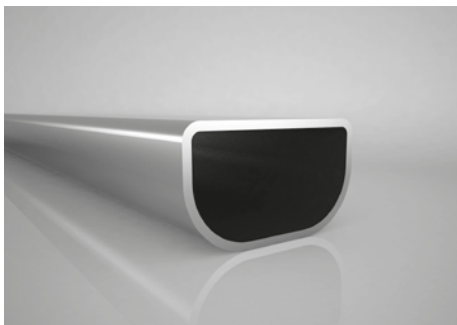
OZL-17



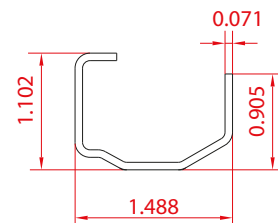
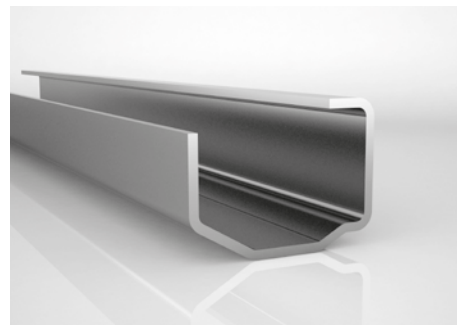
OZL-18



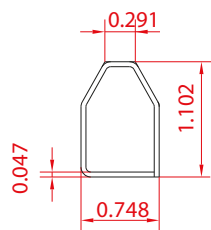
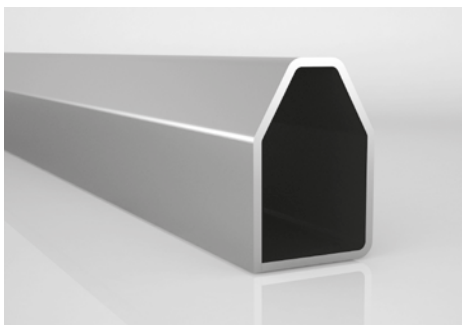
OZL-19



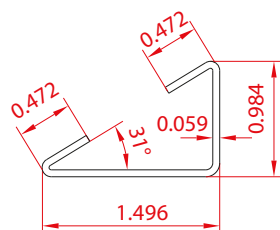
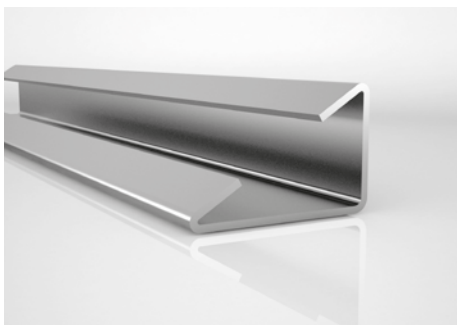
OZL-20



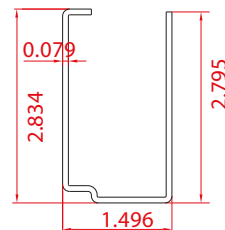
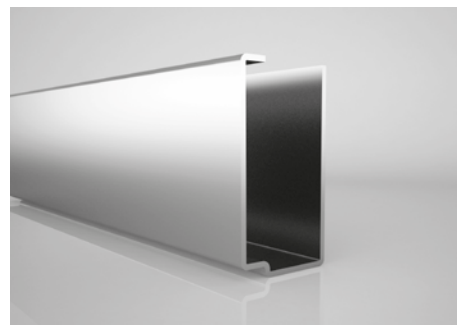
OZL-21



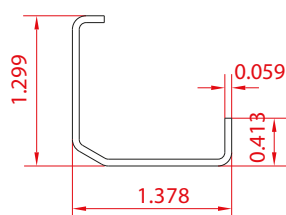
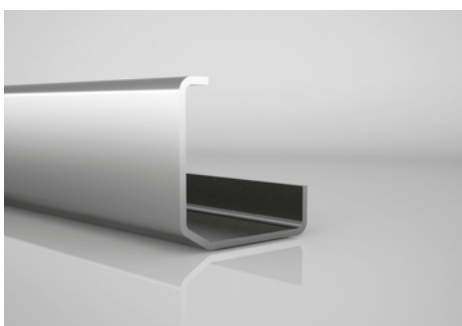
OZL-22



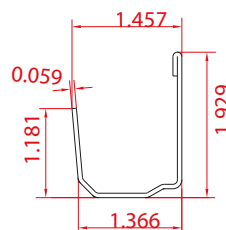
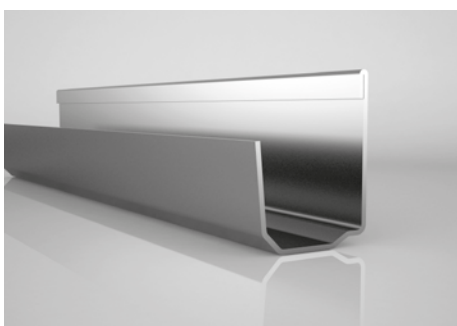
OZL-23



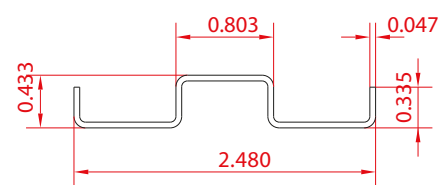
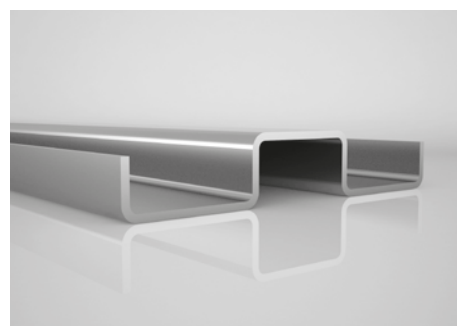
OZL-24



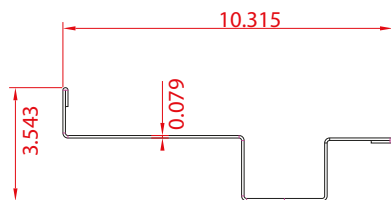
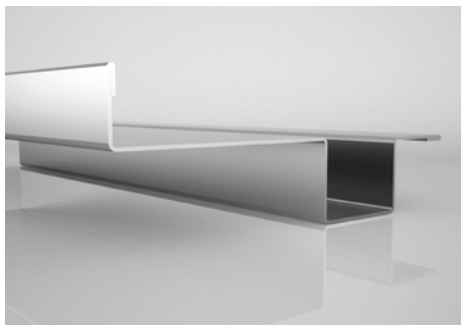
OZL-25



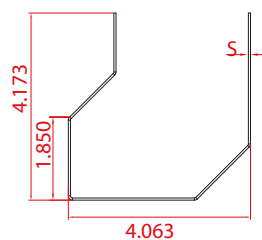
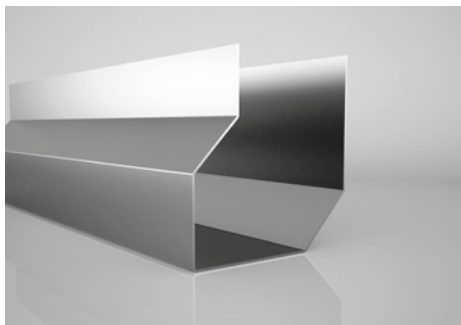
OZL-26



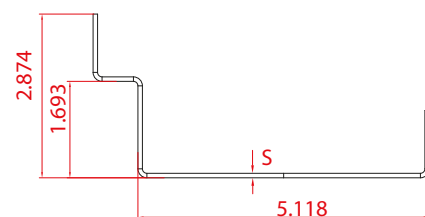
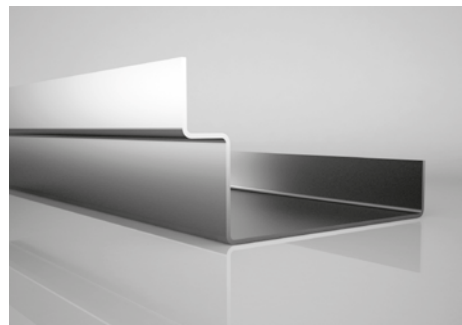
OZL-27



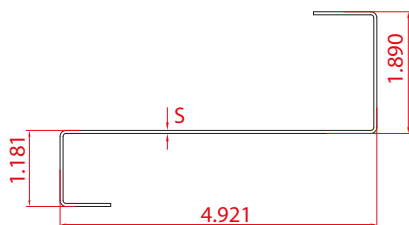
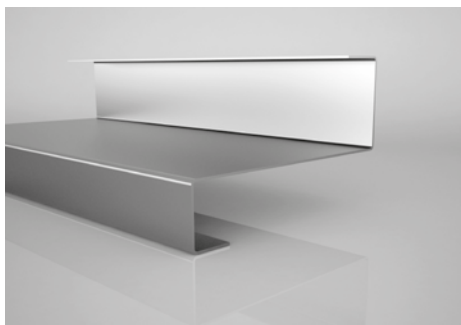
OZL-28



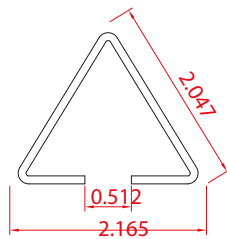
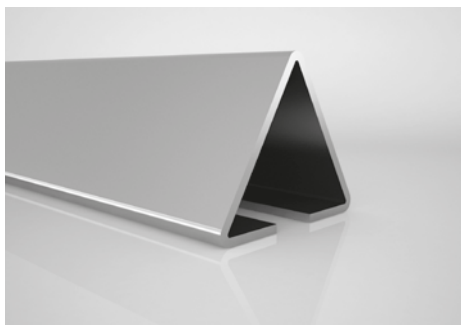
OZL-29



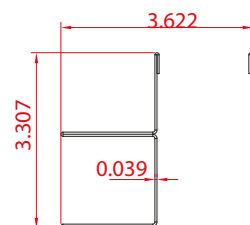
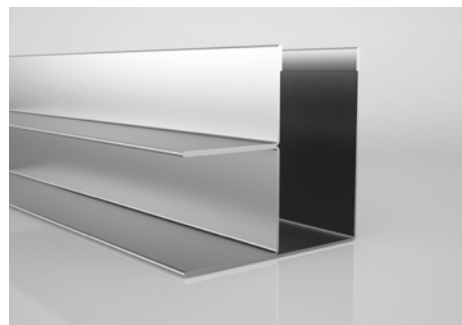
OZL-30



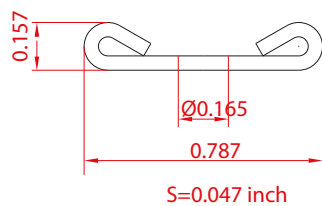
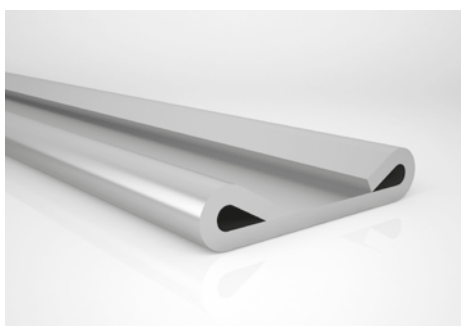
OZL-31



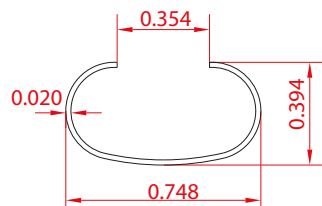
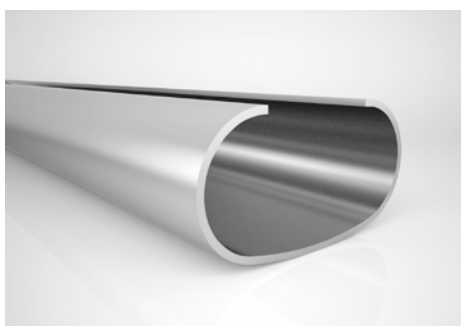
OZL-32



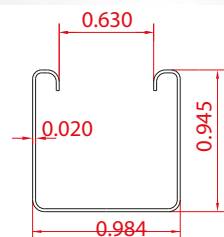
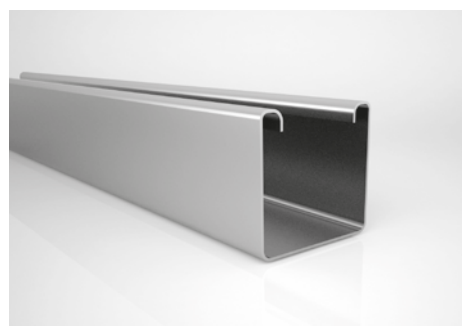
OZL-33



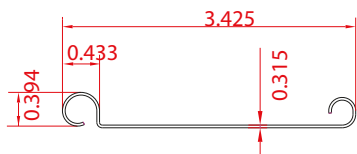
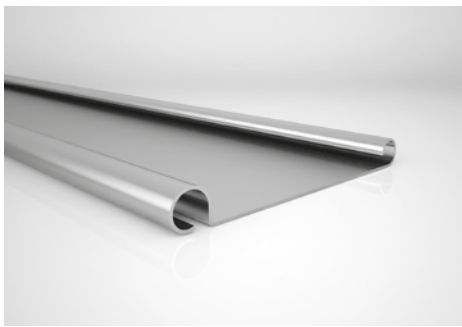
OZL-34



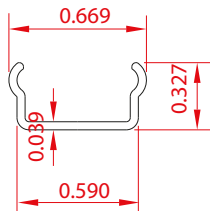
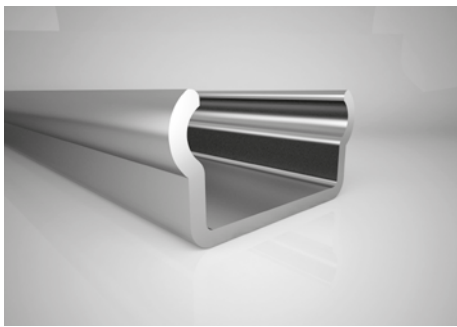
OZL-35



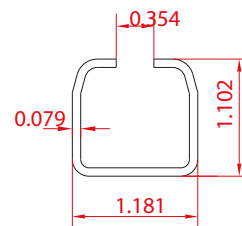
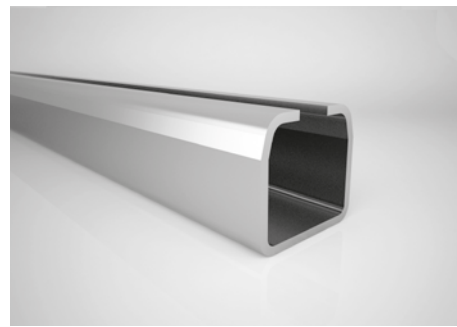
OZL-36



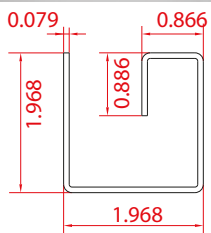
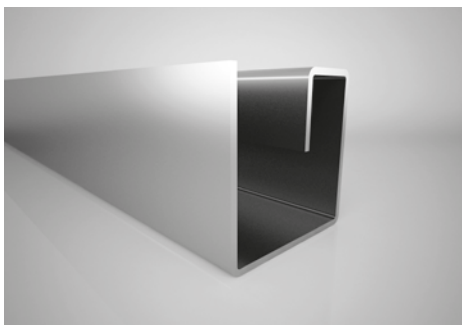
OZL-37



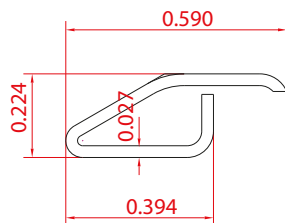
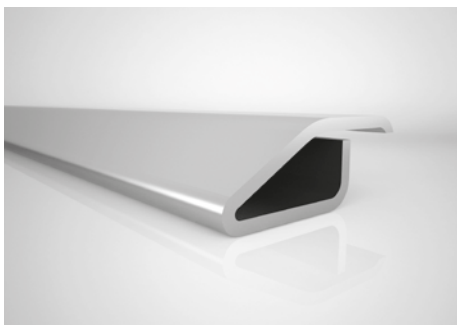
OZL-38



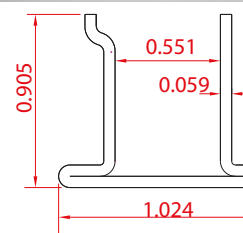
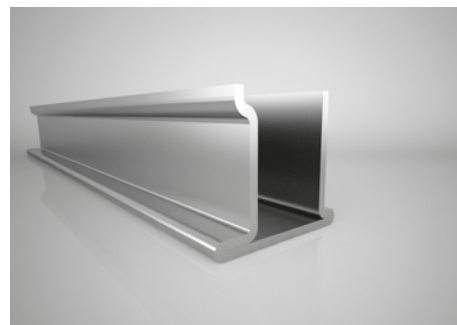
OZL-39



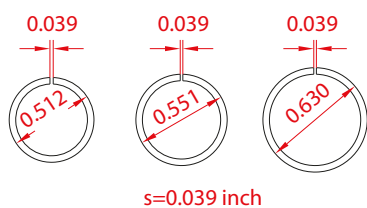
OZL-40



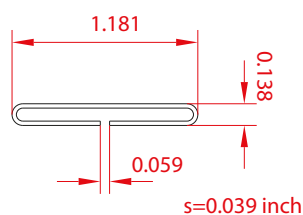
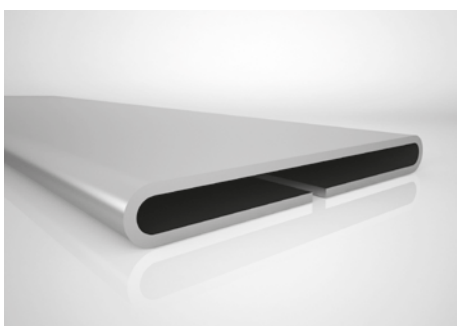
OZL-41



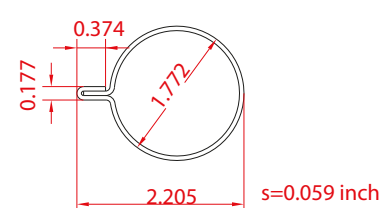
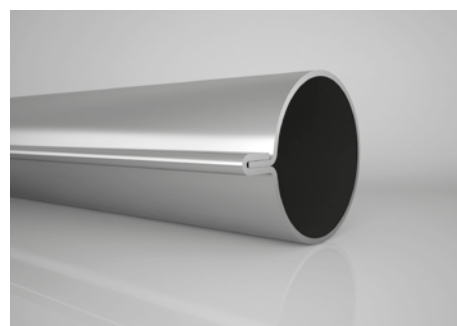
OZL-42



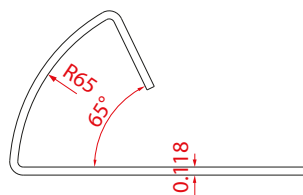
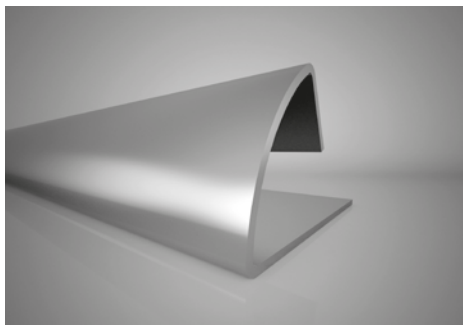
OZL-43



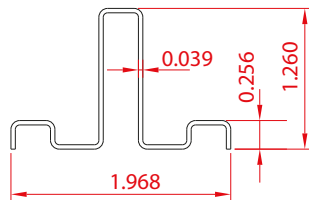
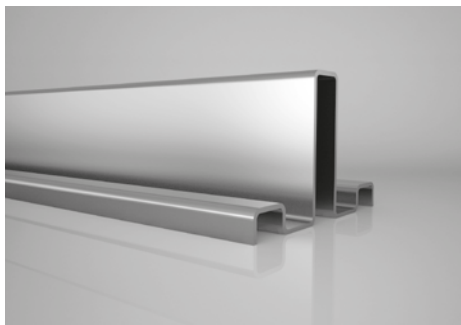
OZL-44



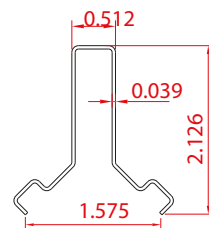
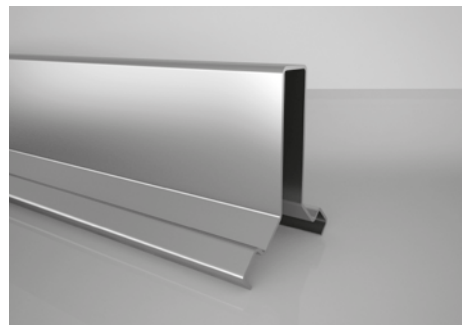
OZL-45



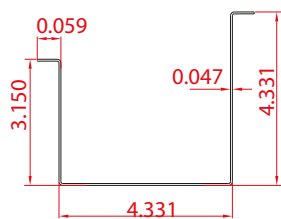
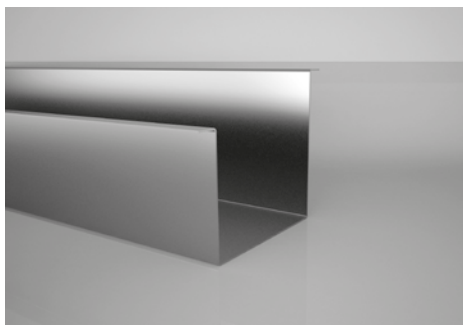
OZL-46



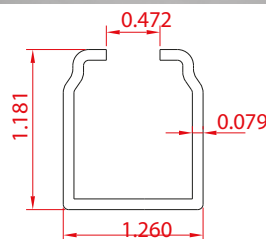
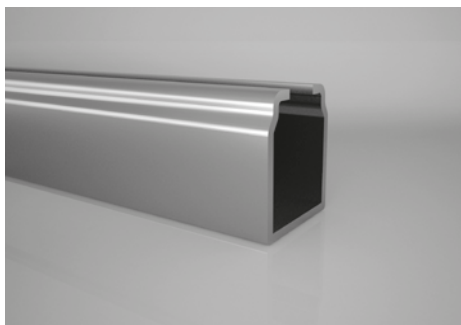
OZL-47



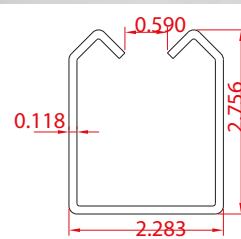
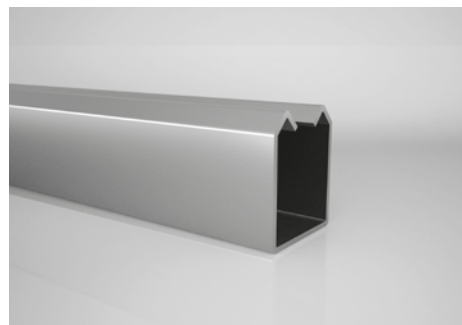
OZL-48



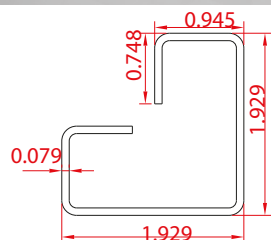
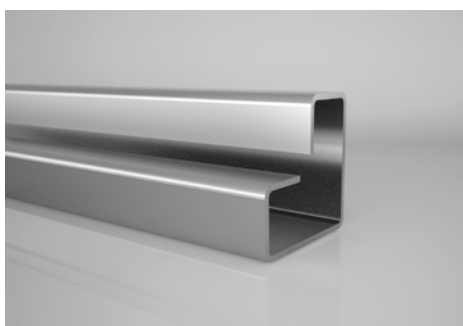
OZL-49



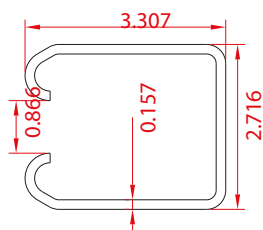
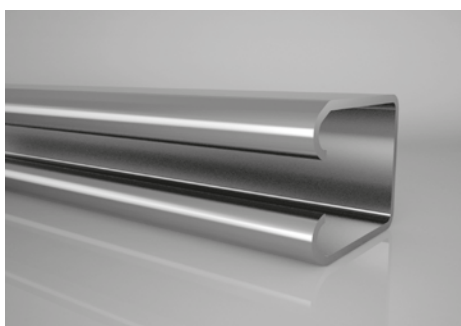
OZL-50



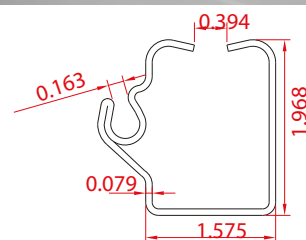
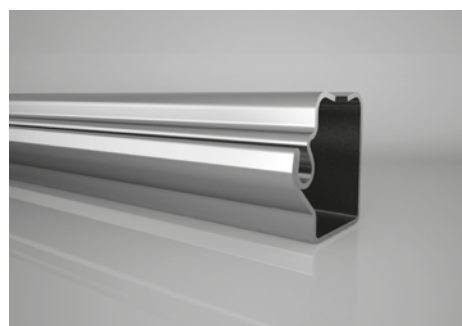
OZL-51



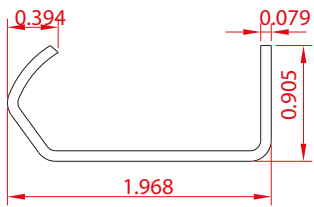
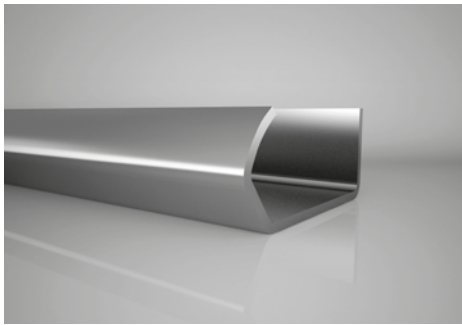
OZL-52



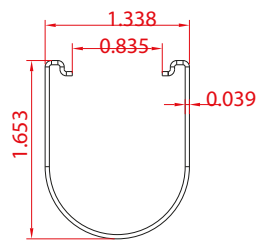
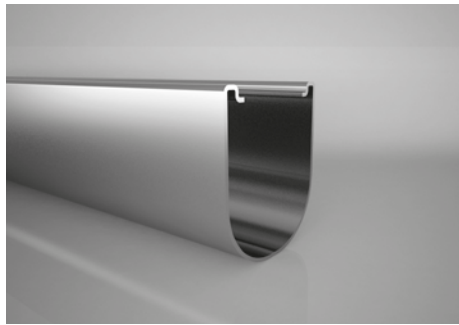
OZL-53



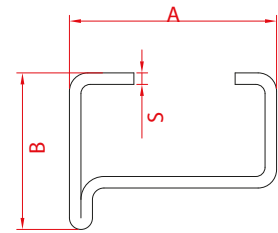
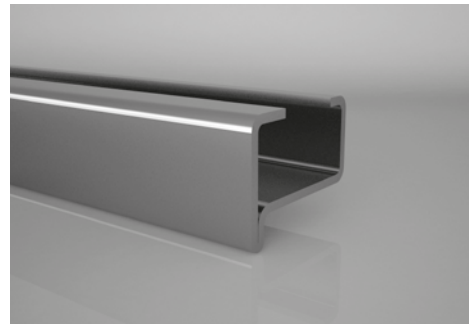
OZL-54



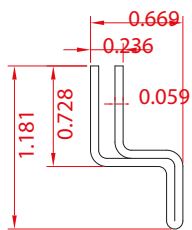
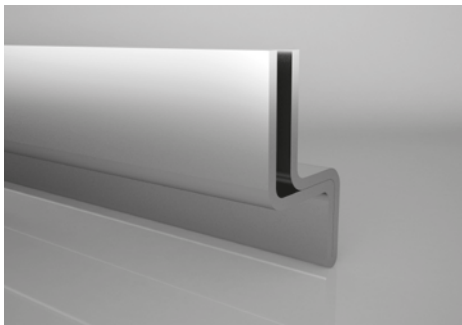
OZL-55



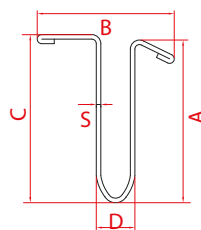
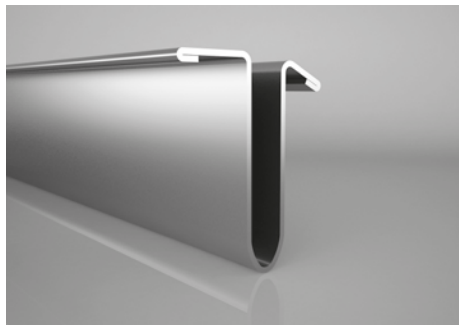
OZL-56



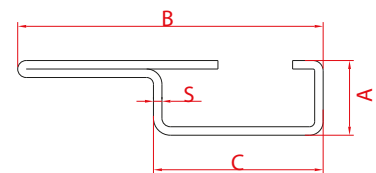
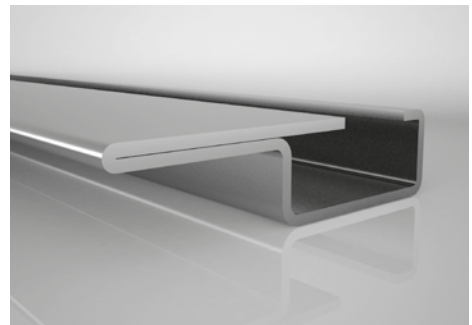
OZL-57



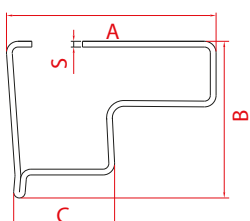
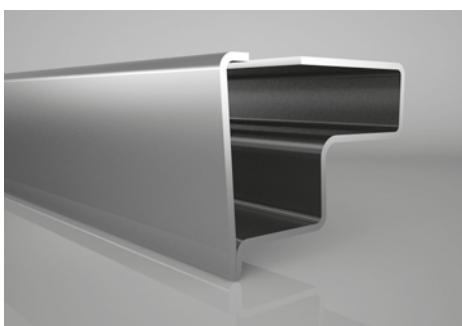
OZL-58



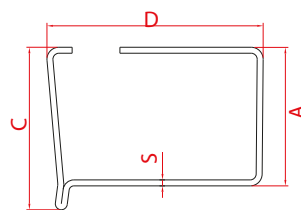
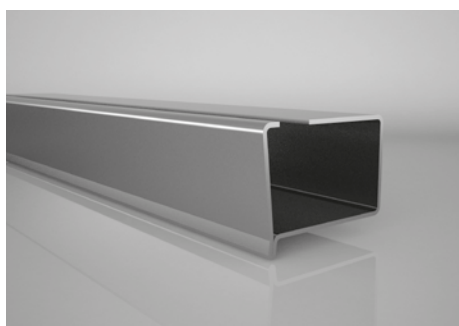
OZL-59



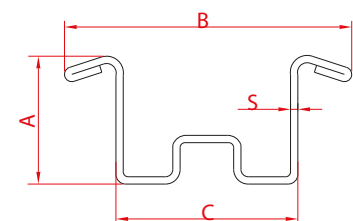
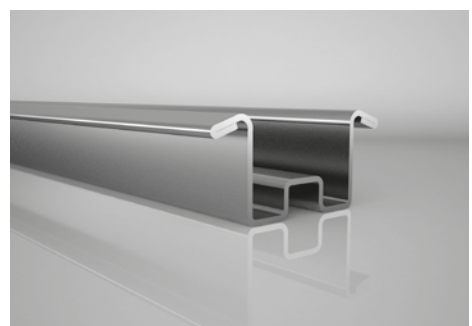
OZL-60



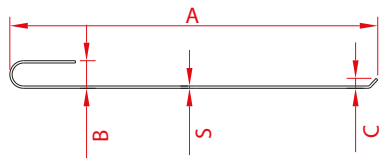
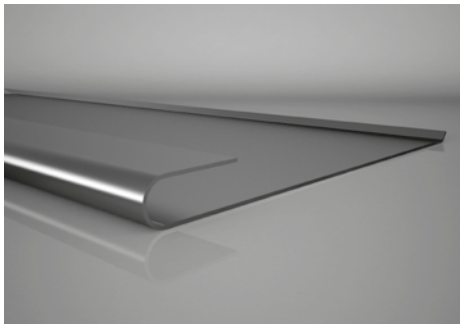
OZL-61



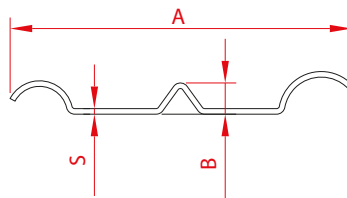
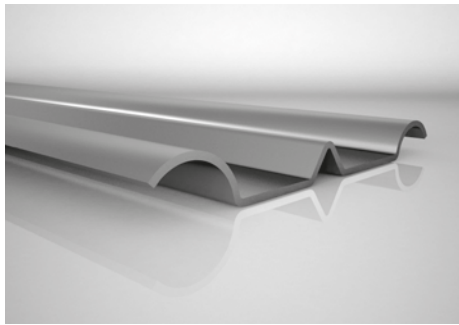
OZL-62



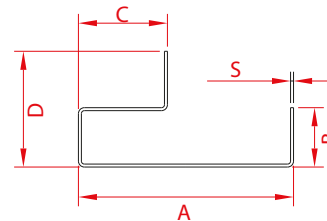
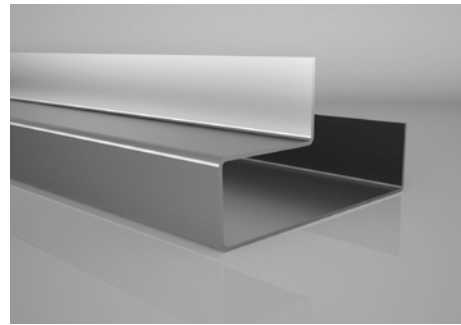
OZL-63



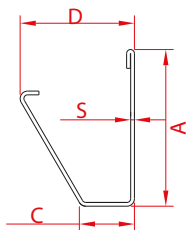
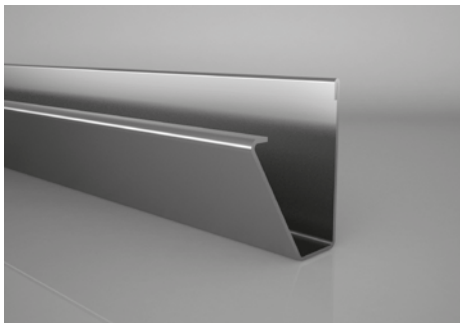
OZL-64



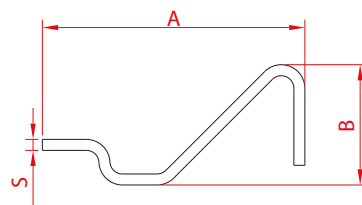
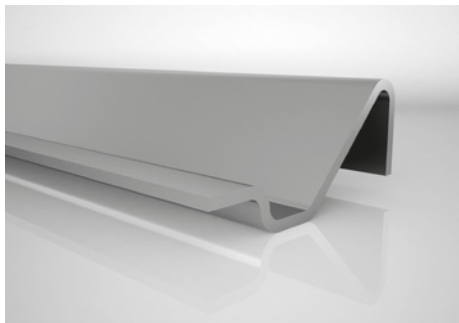
OZL-65



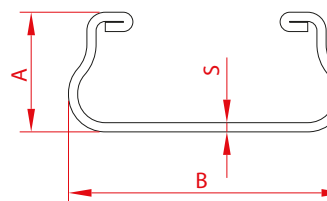
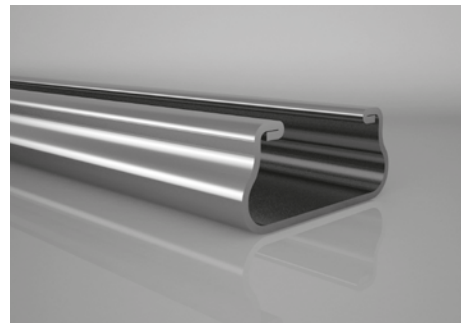
OZL-66



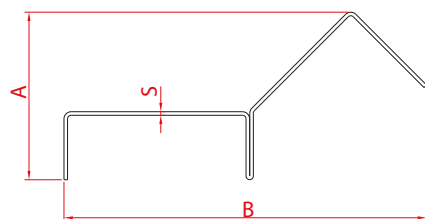
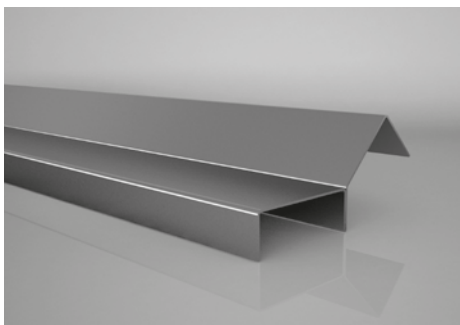
OZL-67



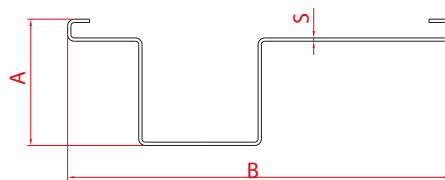
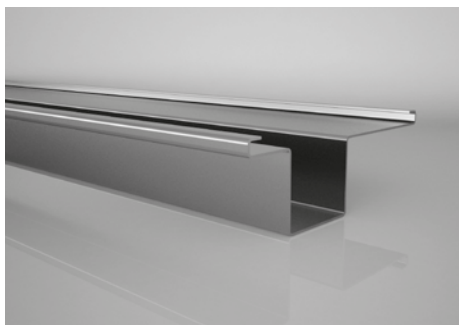
OZL-68



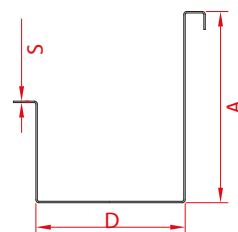
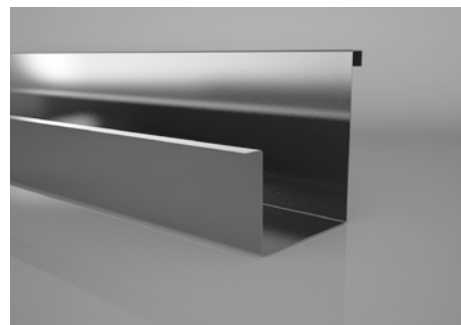
OZL-69



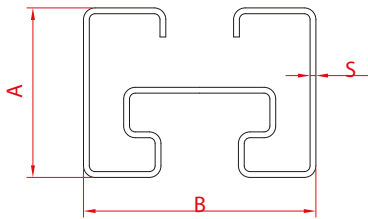
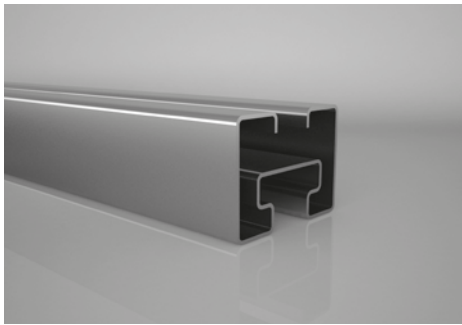
OZL-70



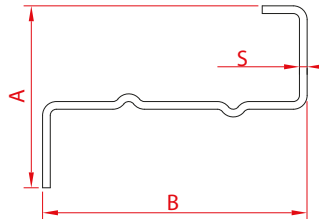
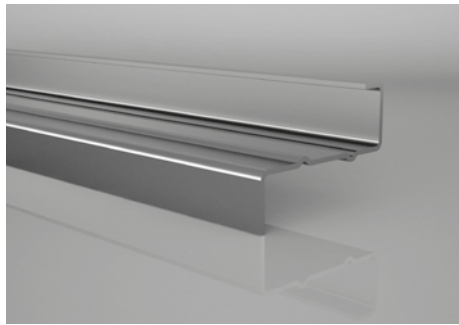
OZL-71



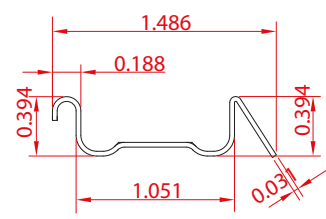
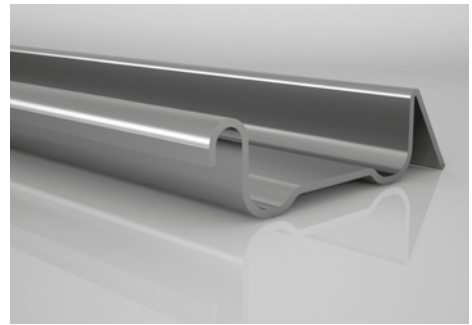
OZL-72



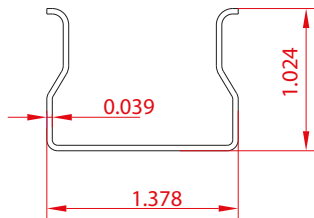
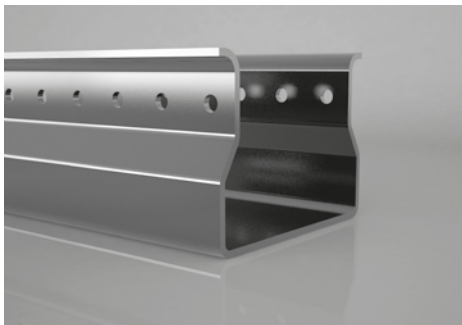
OZL-73



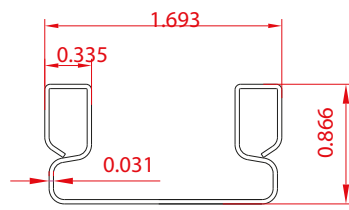
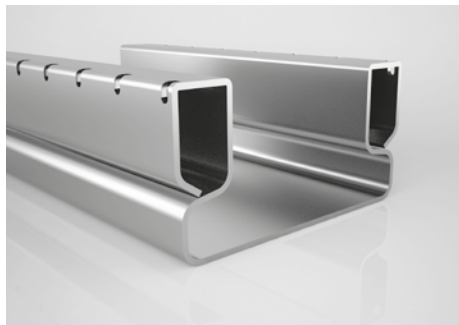
OZL-74



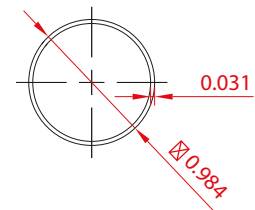
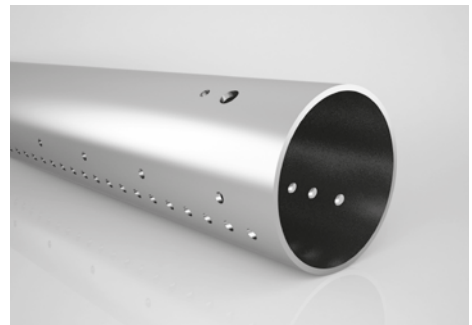
OZL-75



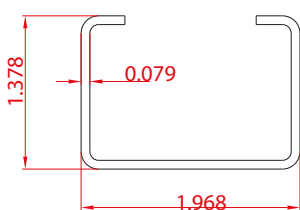
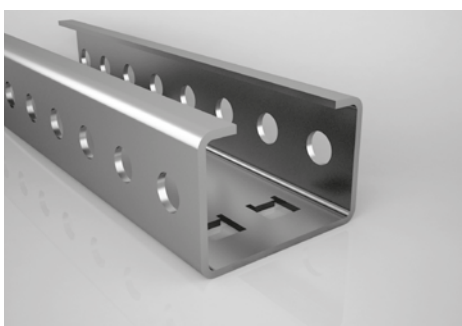
OZL-76



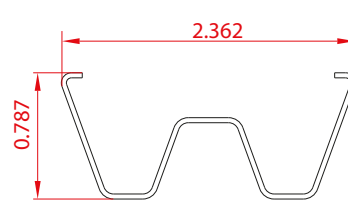
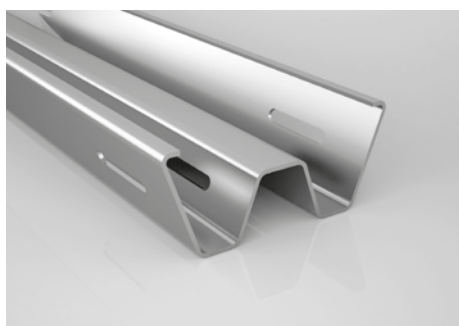
OZL-77



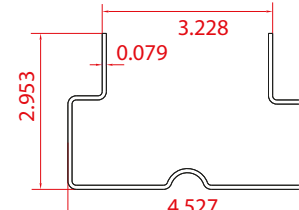
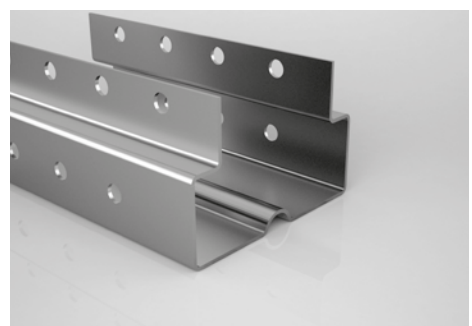
OZL-78



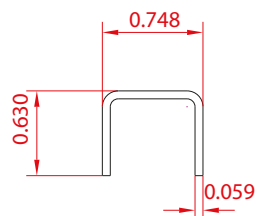
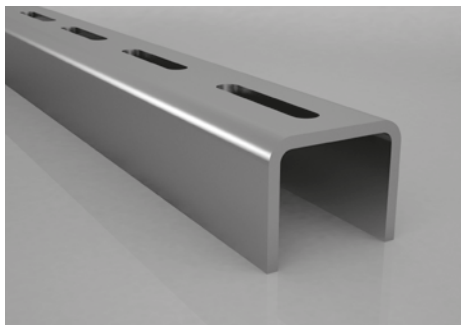
OZL-79



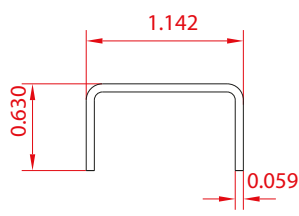
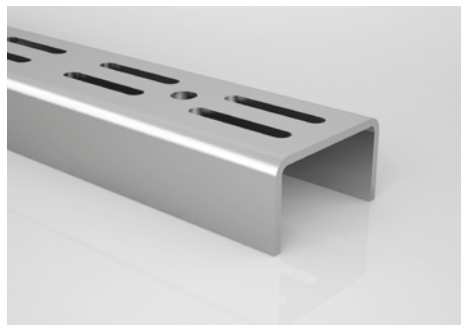
OZL-80



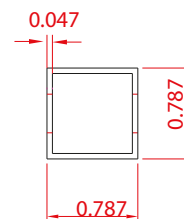
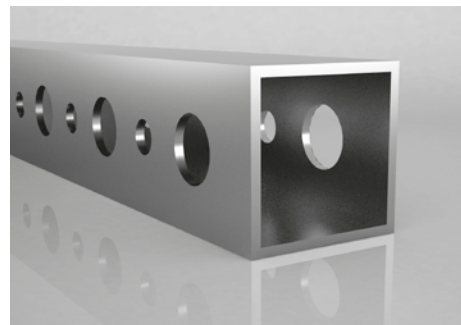
OZL-81



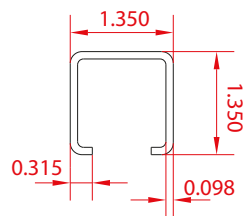
OZL-82



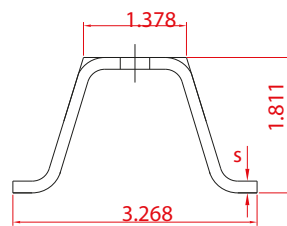
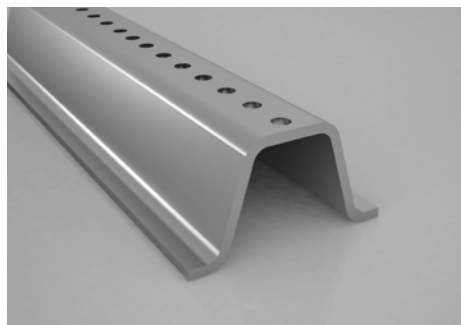
OZL-83



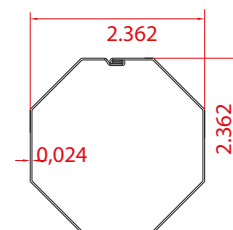
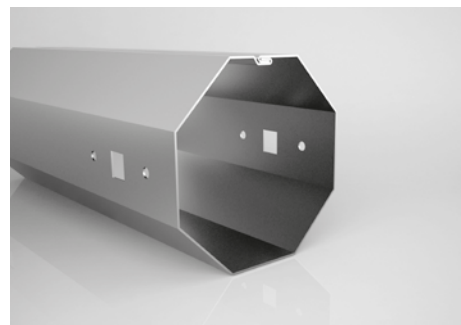
OZL-84



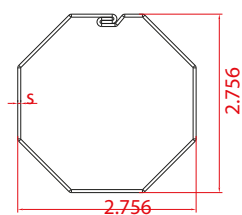
OZL-85



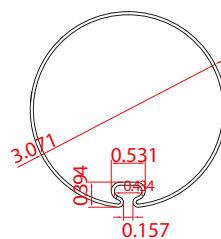
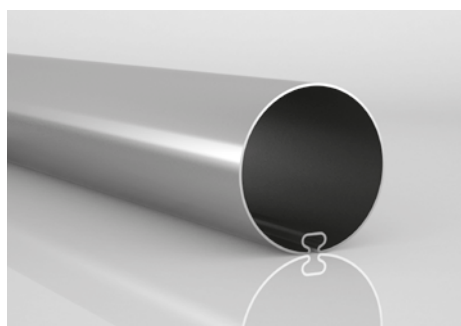
OZL-86



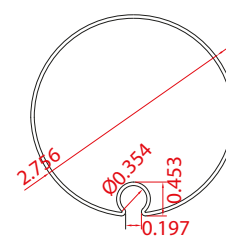
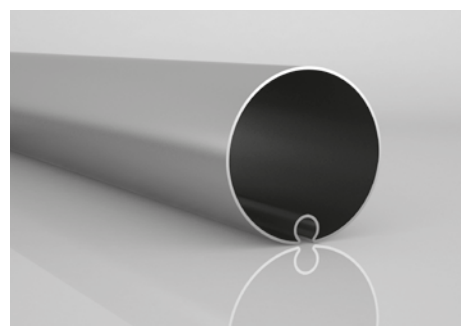
OZL-87



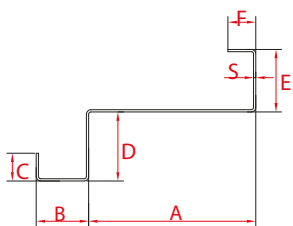
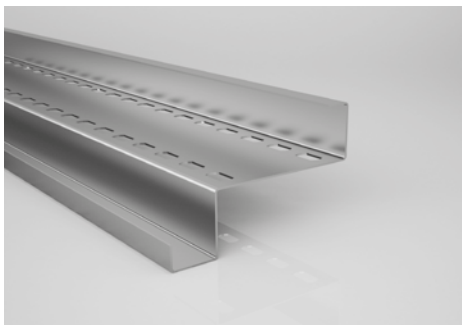
OZL-88



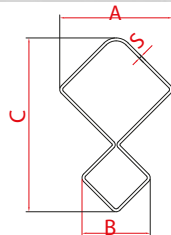
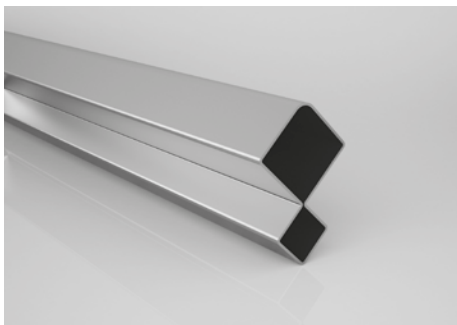
OZL-89



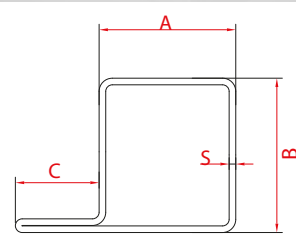
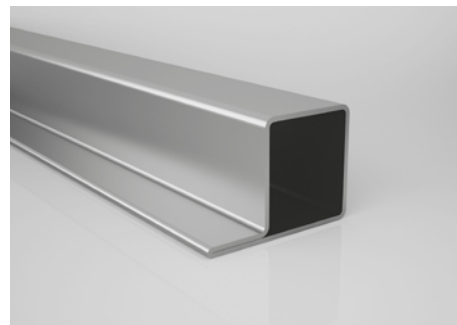
OZL-90



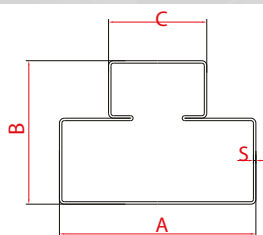
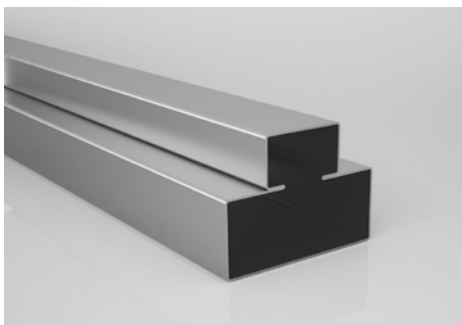
OZL-91



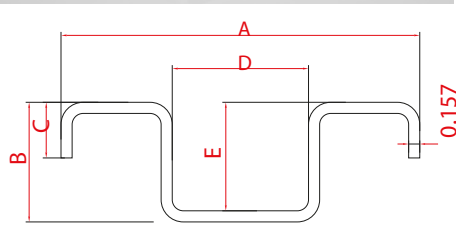
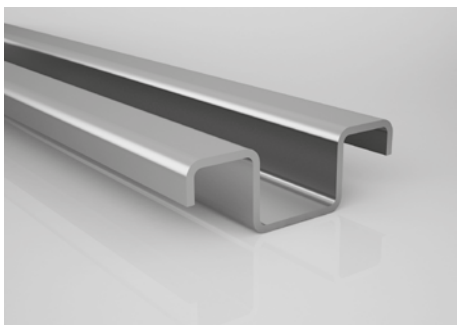
OZL-92



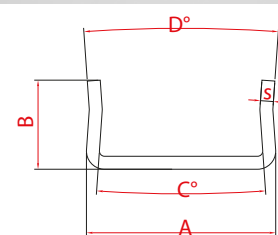
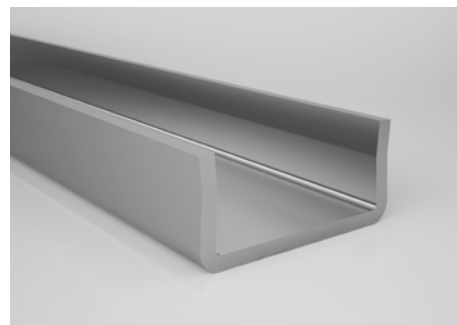
OZL-93



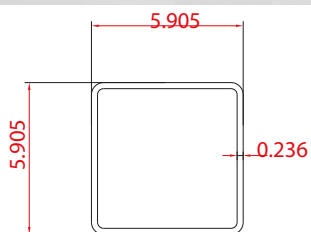
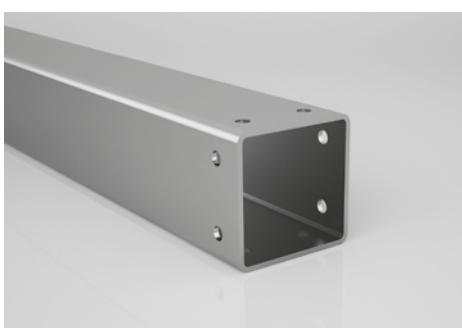
OZL-94



OZL-95

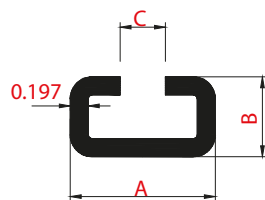
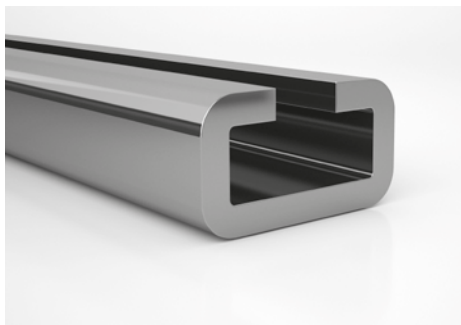


OZL-96

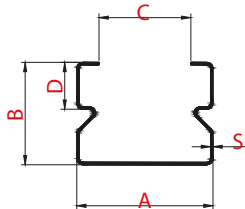
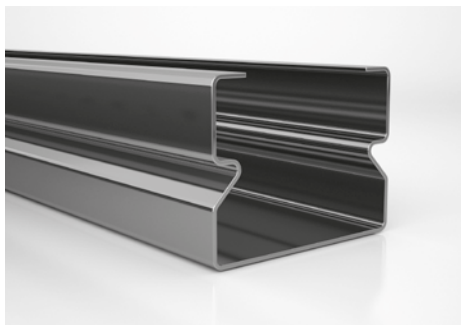


OZL-97

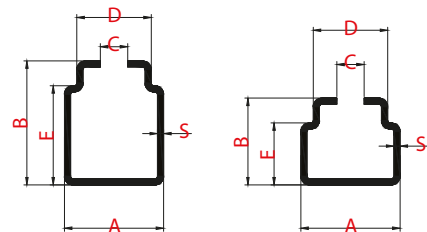
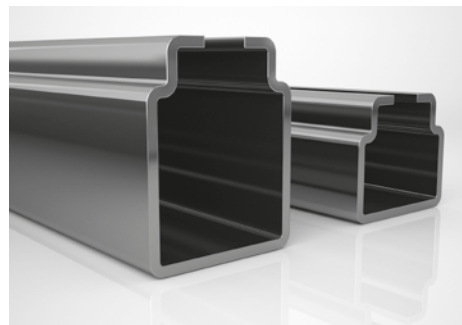




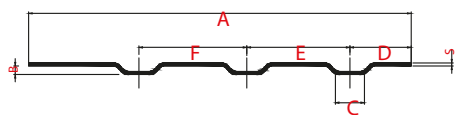
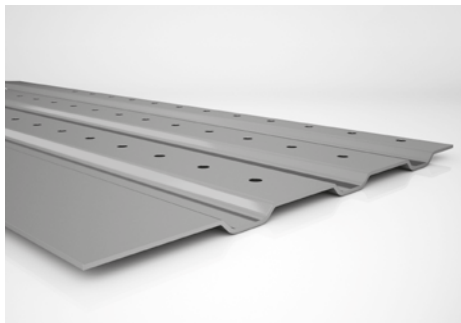
OZL-98



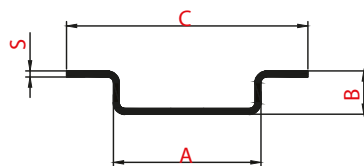
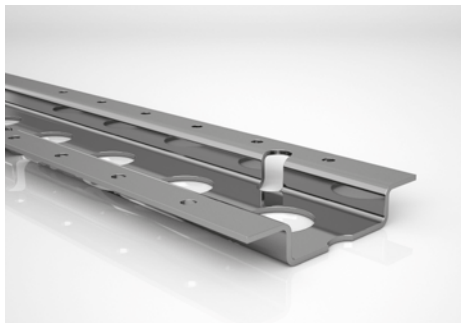
OZL-99



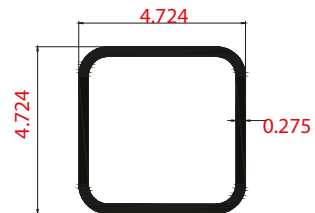
OZL-100



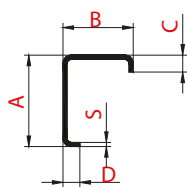
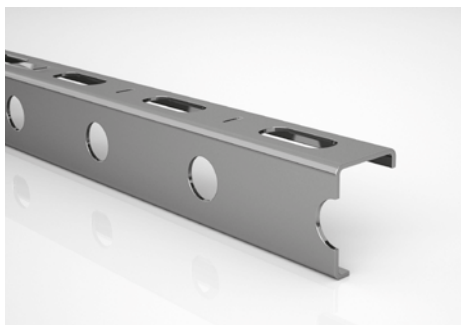
OZL-101



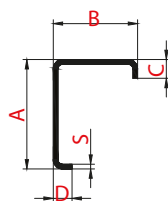
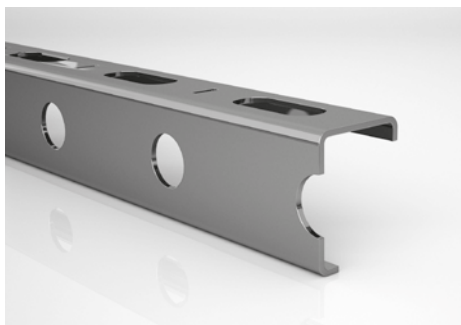
OZL-102



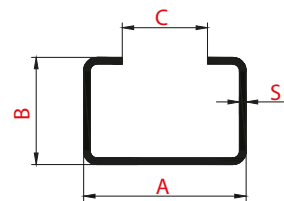
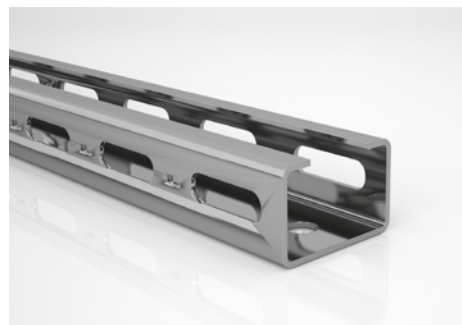
OZL-103



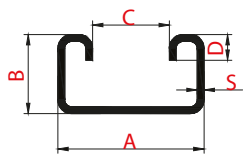
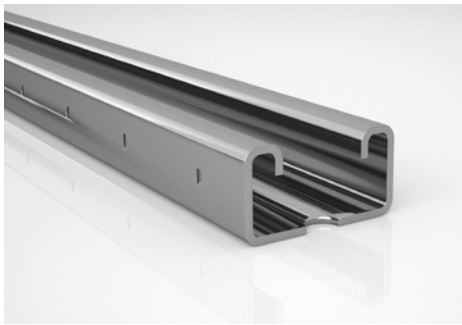
OZL-104



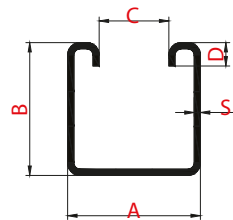
OZL-105



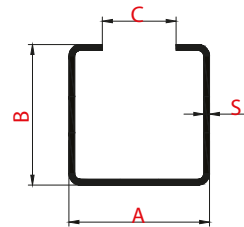
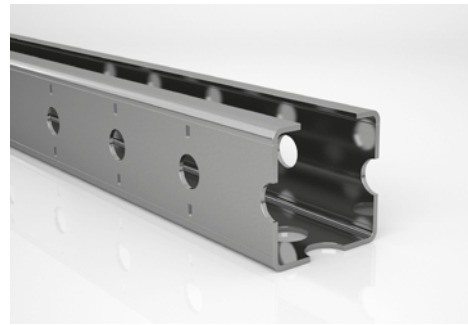
OZL-106



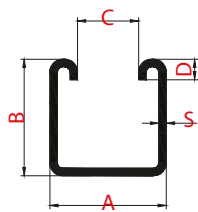
OZL-107



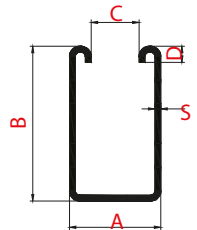
OZL-108



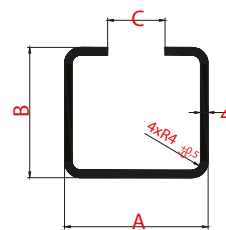
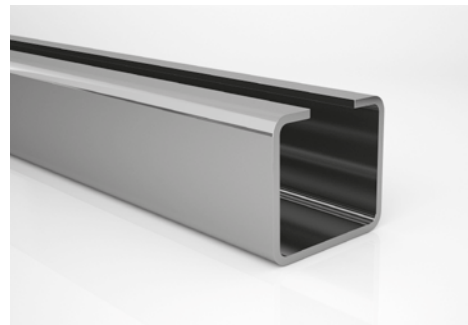
OZL-109



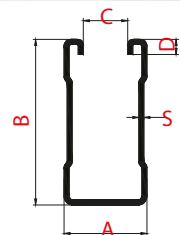
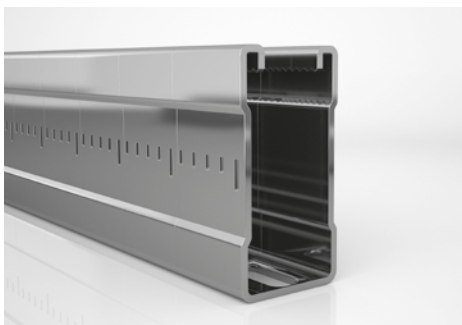
OZL-110



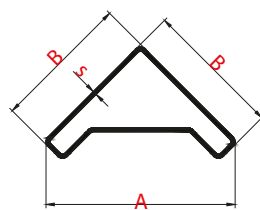
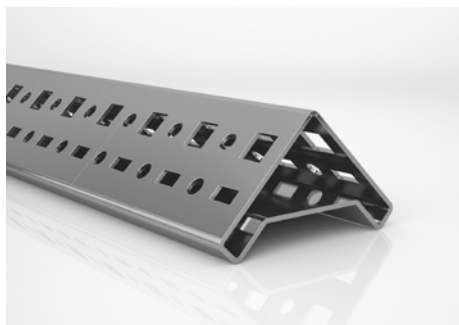
OZL-111



OZL-112



OZL-113



OZL-114