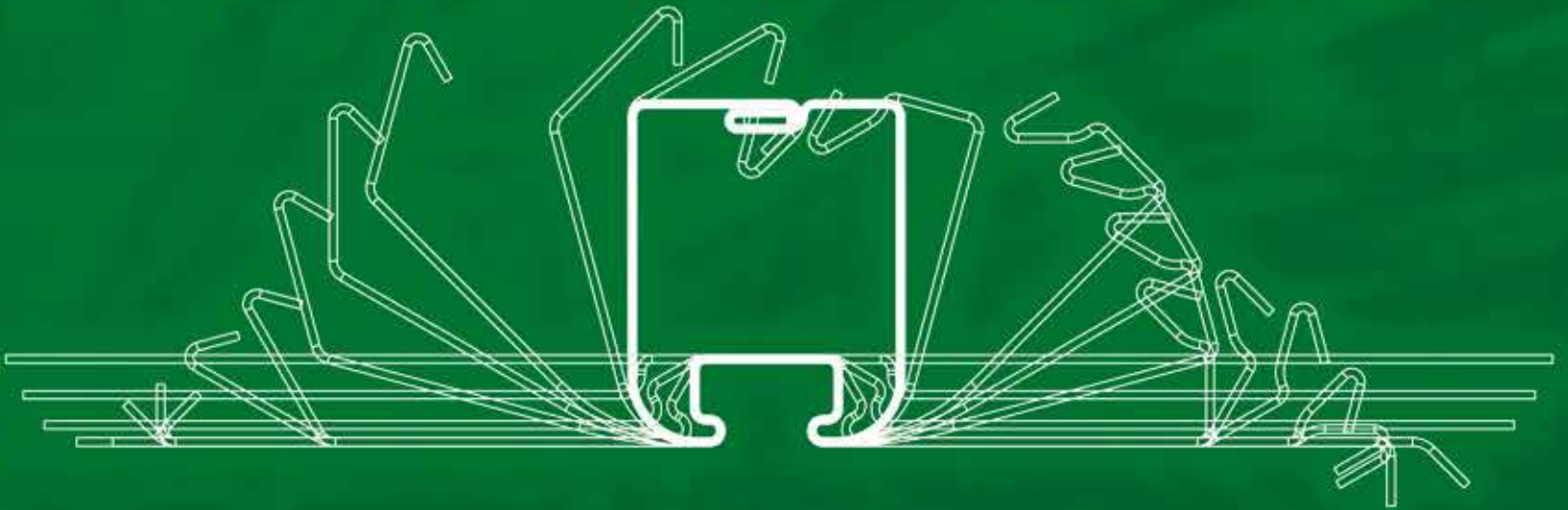




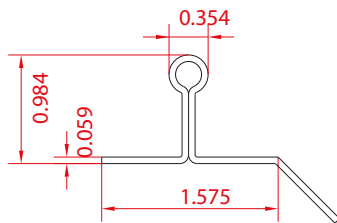
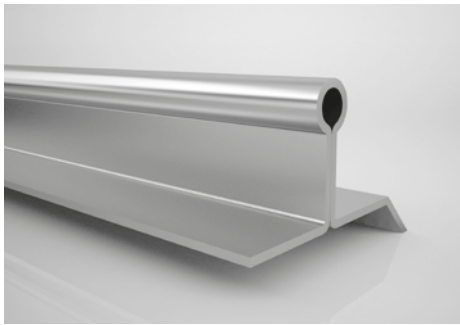
KMC
STEEL & ROLL FORMING



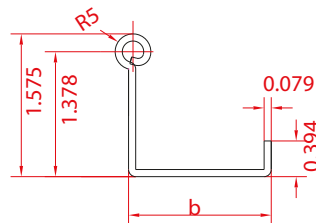
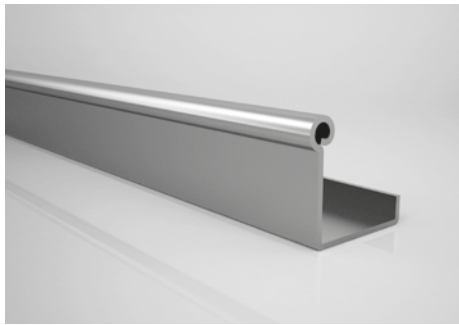
PROFILES FOR AGRICULTURE AND GREENHOUSE

- Greenhouse profiles & parts •
- Greenhouse U, L & I clips •
- Connection parts •
- Tubes and profiles in special cross-section •
- Gutter range in different shapes & sizes •

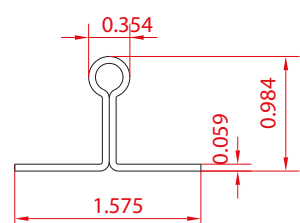
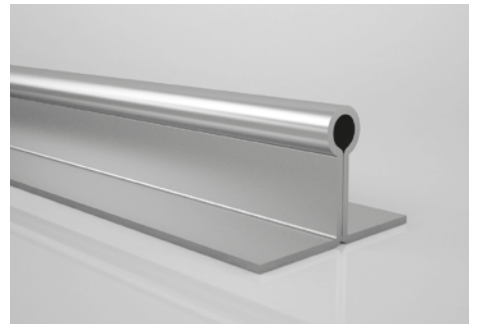
The design and production of our molds and fixtures that are used in every stage of the production are produced by our own experienced technical team. On special profiles punching, bending, edge reducing, edging, end cutting and similar requested applications can be performed to have them as semi and finished product.



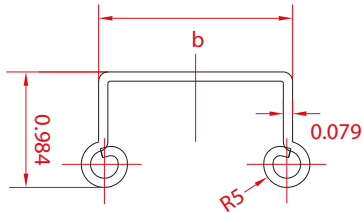
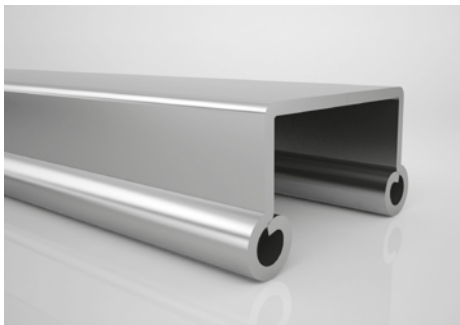
TRM-01



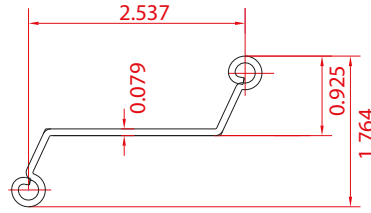
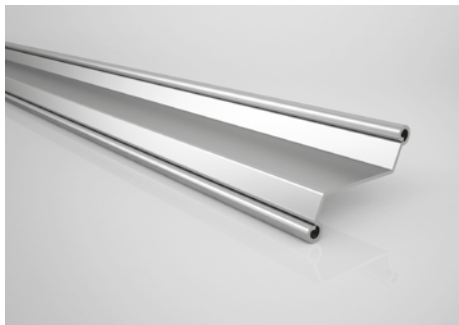
TRM-02



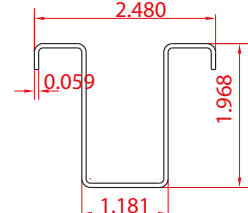
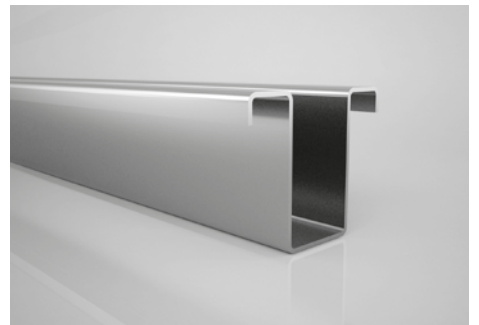
TRM-03



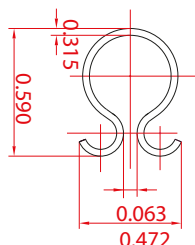
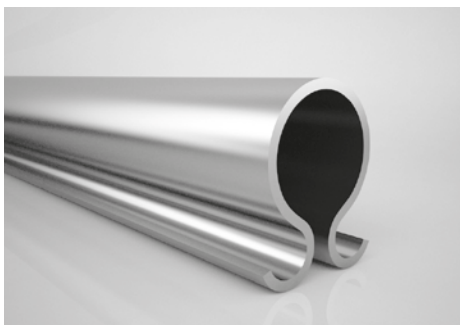
TRM-04



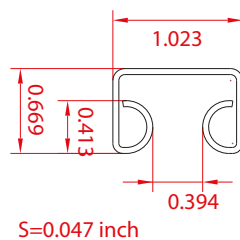
TRM-05



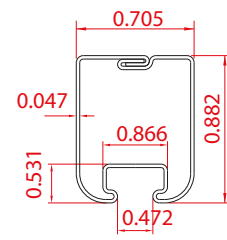
TRM-06



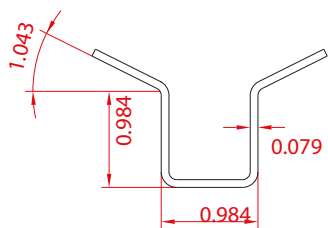
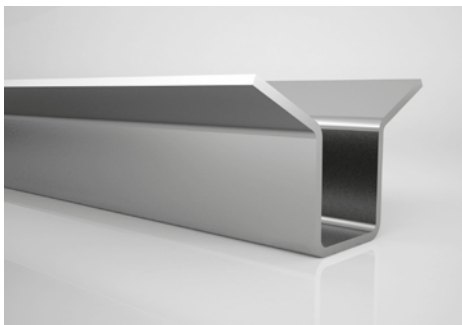
TRM-07



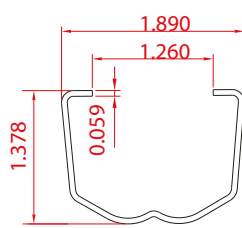
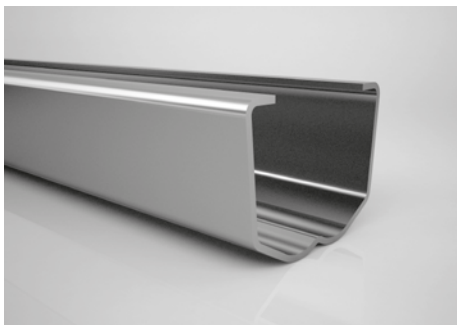
TRM-08



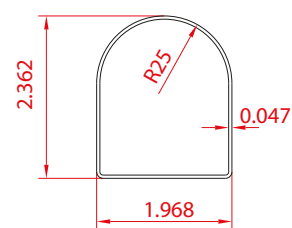
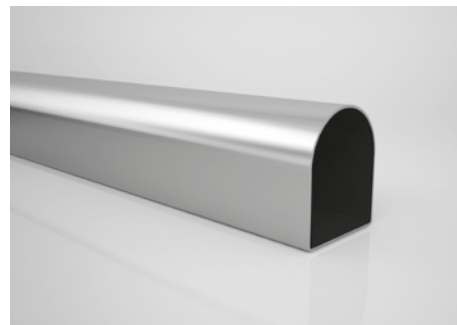
TRM-09



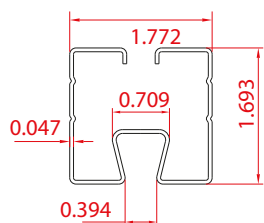
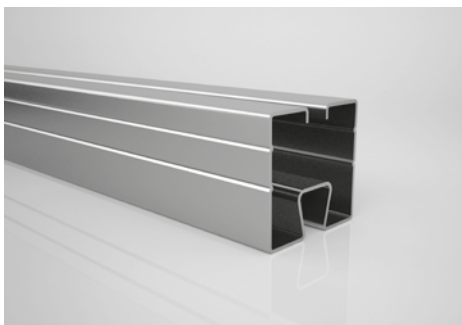
TRM-10



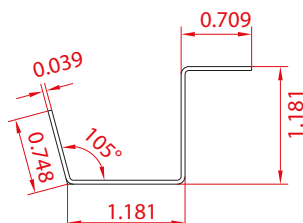
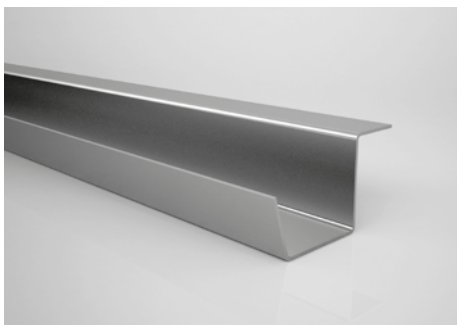
TRM-11



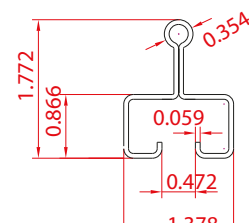
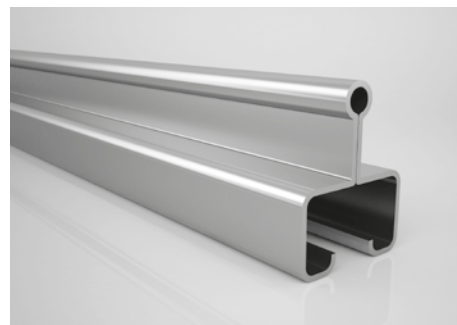
TRM-12



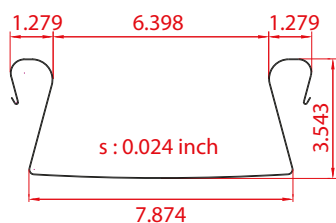
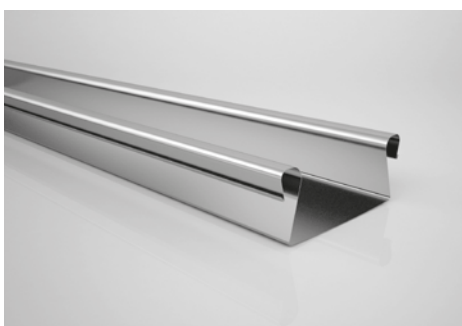
TRM-13



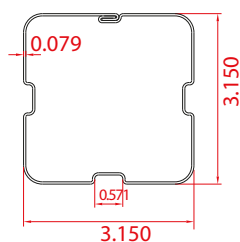
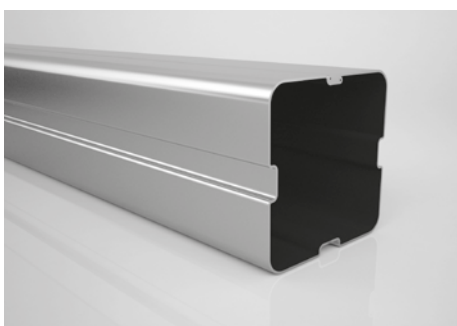
TRM-14



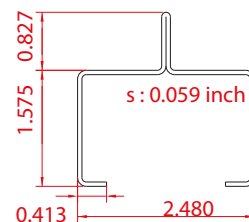
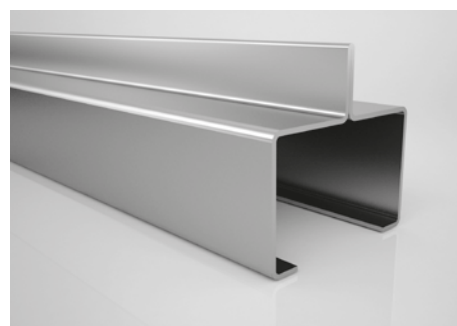
TRM-15



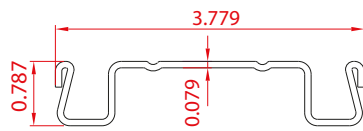
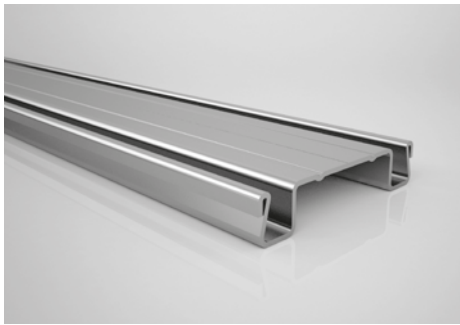
TRM-16



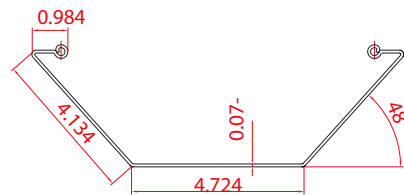
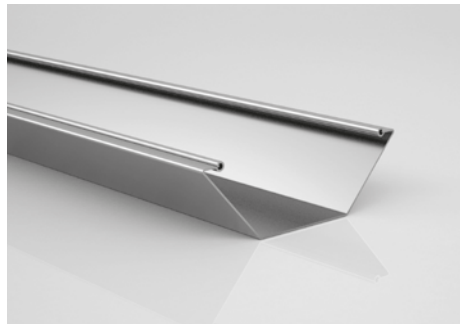
TRM-17



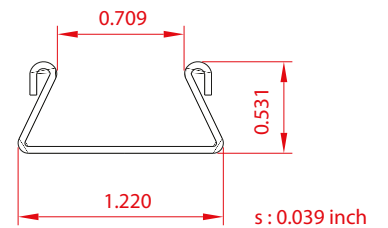
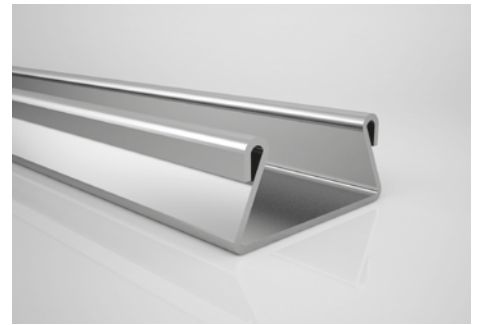
TRM-18



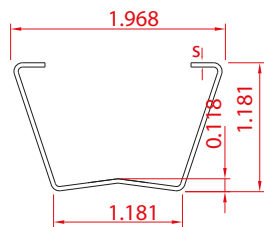
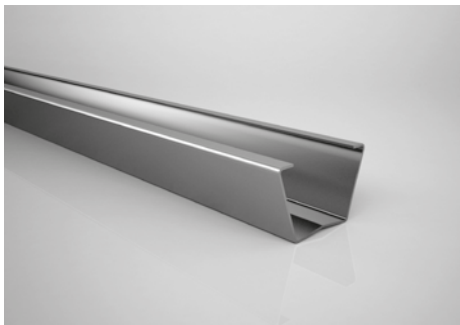
TRM-19



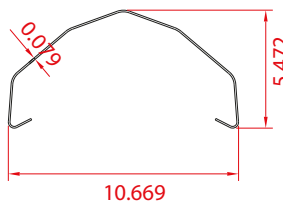
TRM-20



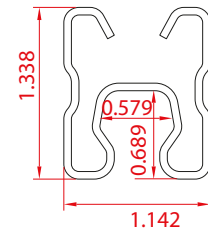
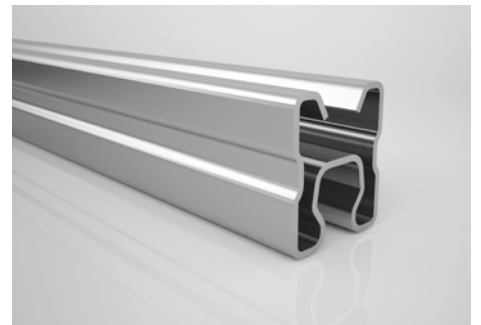
TRM-21



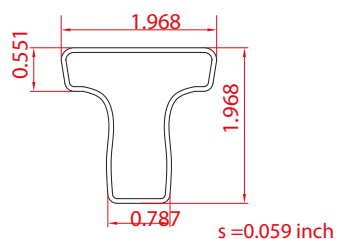
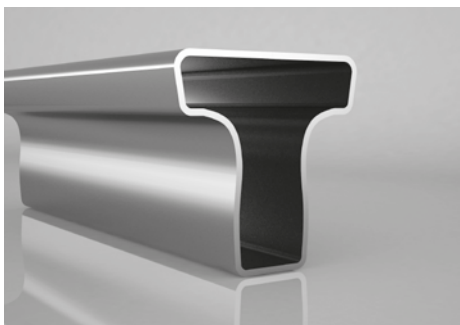
TRM-22



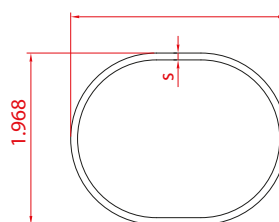
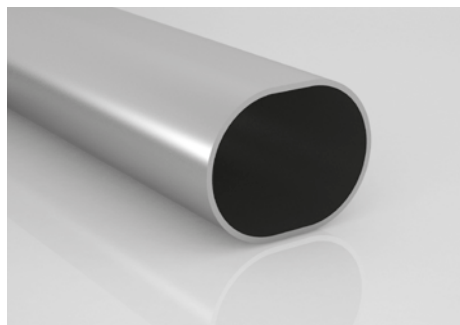
TRM-23



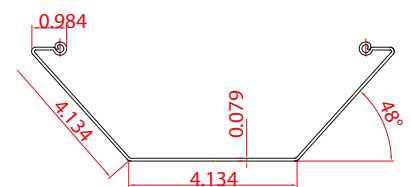
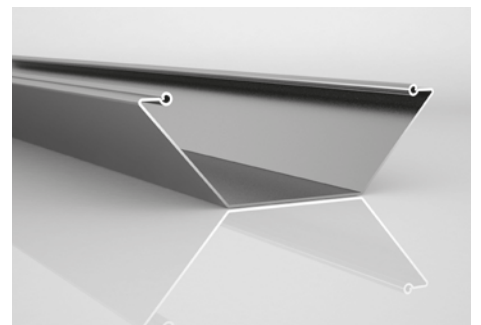
TRM-24



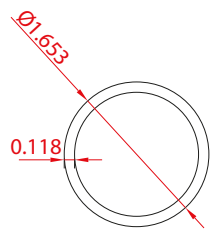
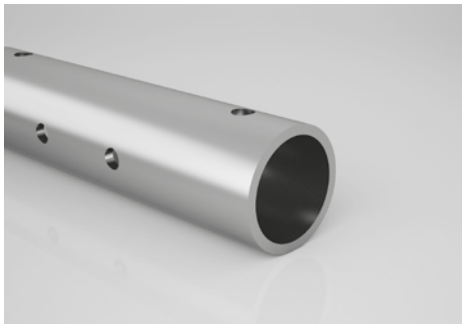
TRM-25



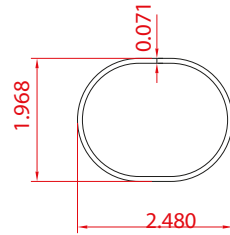
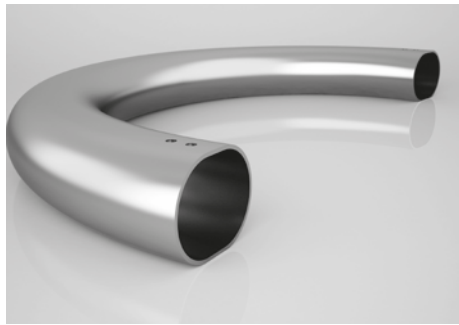
TRM-26



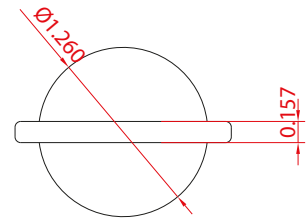
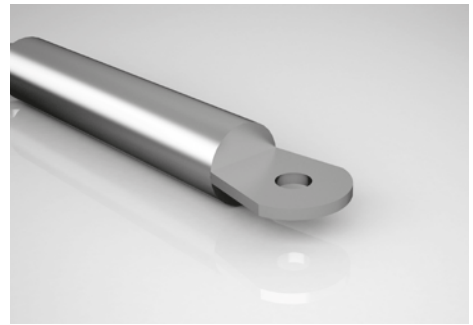
TRM-27



TRM-28



TRM-29



TRM-30

