



www.kmcrollforming.com



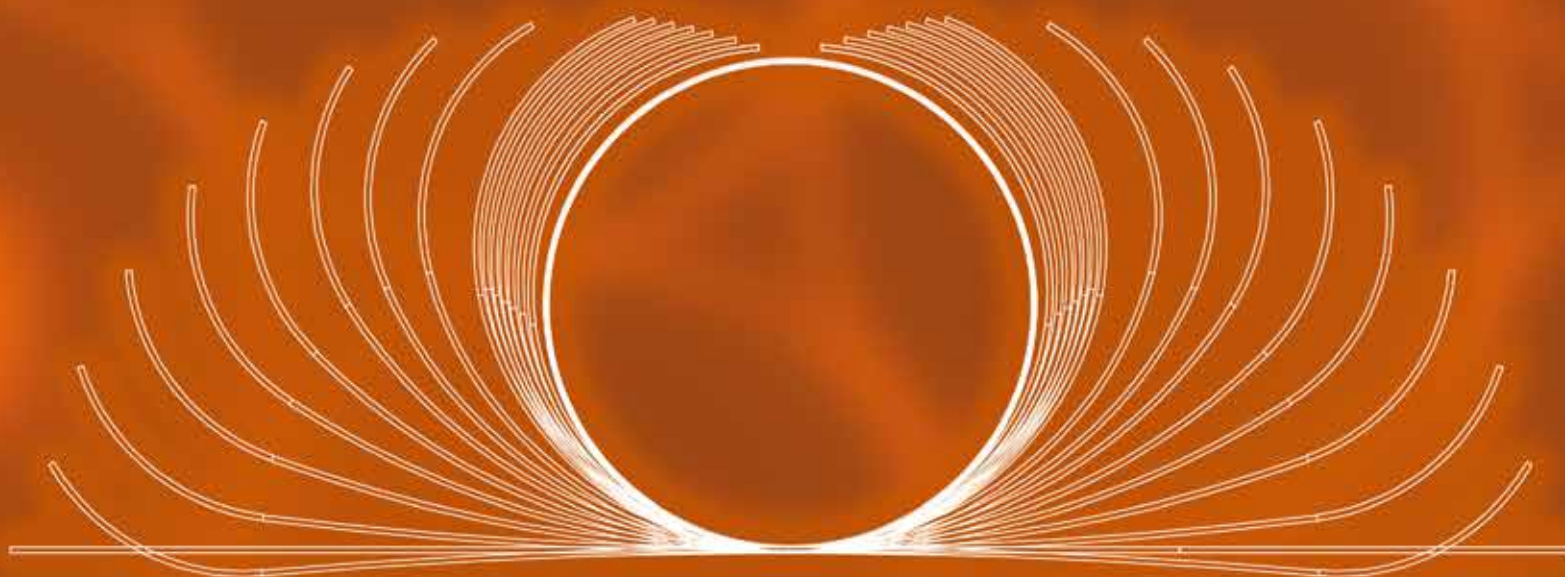
Technical Laboratory & Research and Development (R&D)

We maintain our quality perspective by performing physical & chemical tests in our own in house laboratories and R&D center, from raw material to finished products.

Tooling

The design and production of our molds and fixtures, that are used in every stage of the production, are produced by our own experienced technical team.

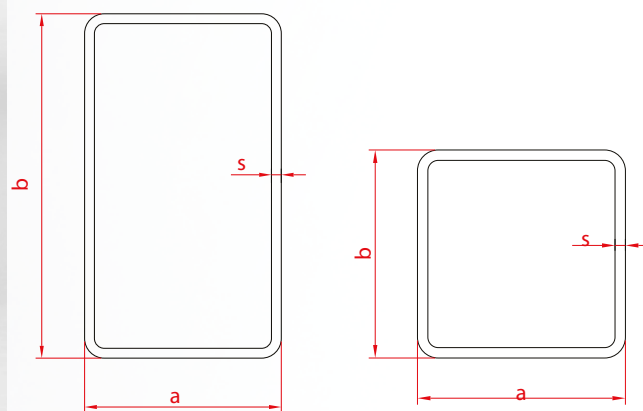
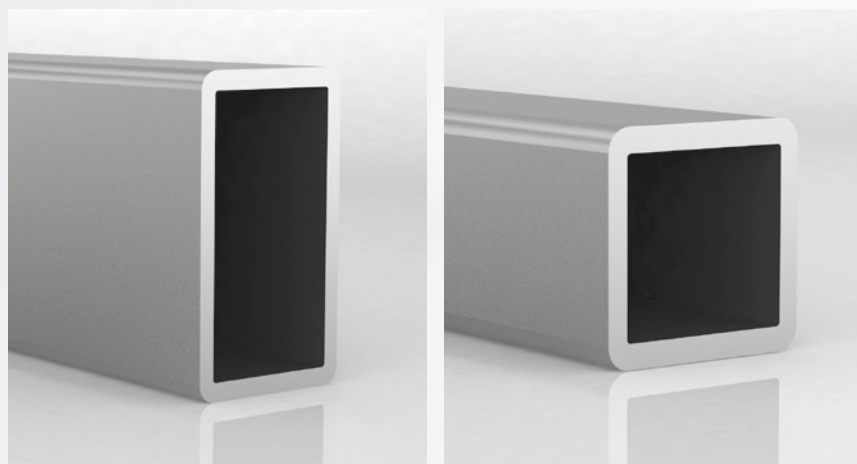




STANDARD TUBES AND PROFILES

As KMC Steel & Roll Forming, we serve to automotive main industry, furniture, domestic appliance, steel goods, decoration, heating & cooling, air conditioning, civil works & steel construction, scaffolding profiles, heated towel rack, solar energy systems, and agricultural irrigation & greenhouse industries by specially produced profiles. We continue to our stabilized commercial life for over half century, with annually 150 thousand trade capacity of Carbon Steel, Galvanized, Hot Rolled and pre-painted on demand and following the latest technology in order to serve you better. We maintain our quality perspective by performing physical & chemical tests in our own in house laboratories and R&D center, from raw material to finished products, using EC (Eddy Current), leak proof test, zinc spray coating on welding point and internal deburring processes. Your special cut to length requirements can be done in our computer controlled CNC and multi saw lines. We provide our best of services to you with ISO 9001 and IATF 16949 quality certificates being environmentally friendly and mindful to labors and occupational safety measurements.

RECTANGULAR & SQUARE PROFILES

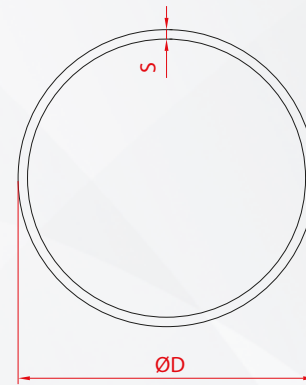
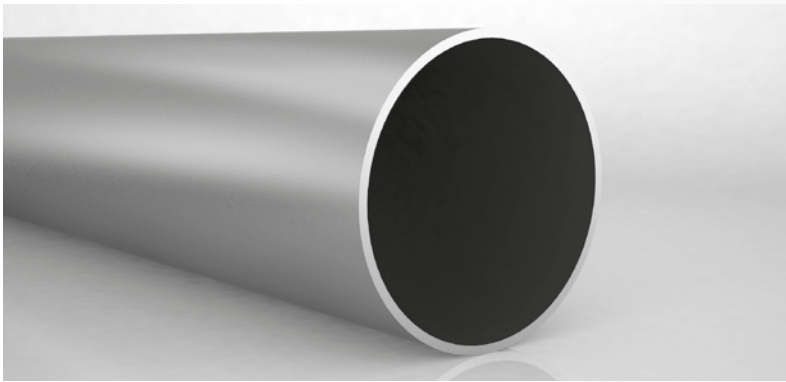


DIMENSIONS			[S] THICKNESS (in)														
Outer Diameter			0.020	0.024	0.028	0.031	0.035	0.039	0.047	0.059	0.079	0.098	0.118	0.157	0.197	0.236	0.315
a x b (in)																	
0.393"/0.393"																	
0.472"/0.472"																	
0.500"/0.500"																	
0.393"/0.787"	0.590"/0.590"																
0.393"/1.181"	0.590"/0.984"	0.787"/0.787"															
0.787"/1.181"	0.984"/0.984"	0.433"/1.574"															
0.787"/1.574"	1.181"/1.181"																
0.984"/1.574"																	
1.181"/1.574"	1.377"/1.377"																
1.181"/1.968"	1.574"/1.574"																
1.181"/2.362"	1.574"/1.968"	1.771"/1.771"															
1.574"/2.362"	1.968"/1.968"	1.181"/2.755"															
1.574"/3.149"	1.968"/2.755"	2.362"/2.362"															
2.362"/3.149"	2.755"/2.755"																
1.968"/3.937"																	
2.362"/3.937"	3.149"/3.149"																
2.362"/4.724"																	
3.149"/4.724"	3.937"/3.937"																
3.149"/5.511"	4.330"/4.330"																
4.724"/4.724"	3.149"/6.299"																
3.937"/5.905"																	
5.905"/5.905"	3.937"/7.874"																

Please contact us for your orders except for the mentioned measures above.



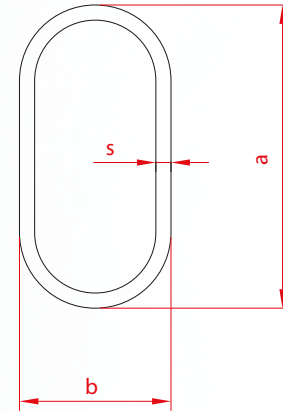
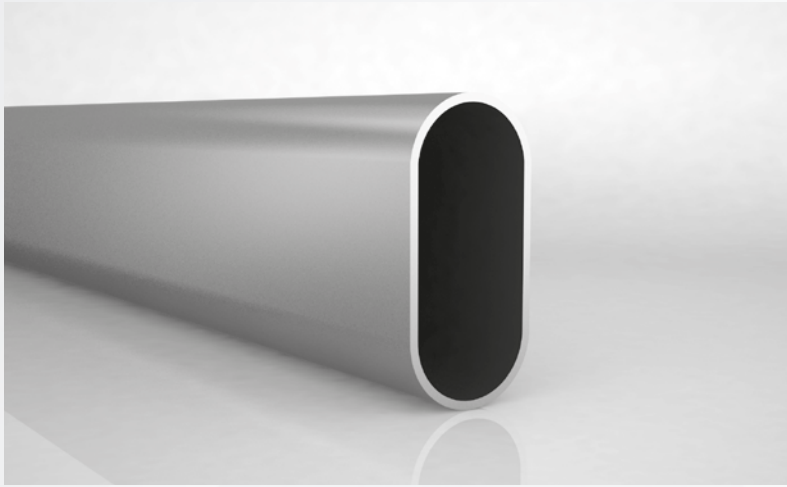
TUBE PROFILES



DIMENSIONS	(S) THICKNESS (in)															
Outer Diameter	0.020	0.024	0.028	0.031	0.035	0.039	0.047	0.059	0.079	0.098	0.118	0.138	0.157	0.197	0.236	0.315
d (in)																
0.393"																
0.472"																
0.511"																
0.551"																
0.629"																
0.669"																
0.708"																
0.787"																
0.826"																
0.866"																
0.905"																
0.984"																
1.062"																
1.102"																
1.102"																
1.181"																
1.259"																
1.338"																
1.377"																
1.496"																
1.574"																
1.653"																
1.771"																
1.889"																
2.007"																
2.125"																
2.244"																
2.362"																
2.480"																
2.755"																
2.992"																
3.228"																
3.503"																
3.700"																
4.015"																
4.488"																
5.000"																
5.472"																
5.984"																
6.259"																
6.614"																
7.519"																

Please contact us for your orders except for the mentioned measures above.

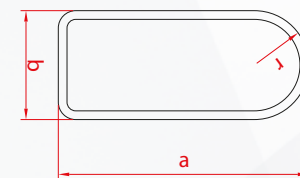
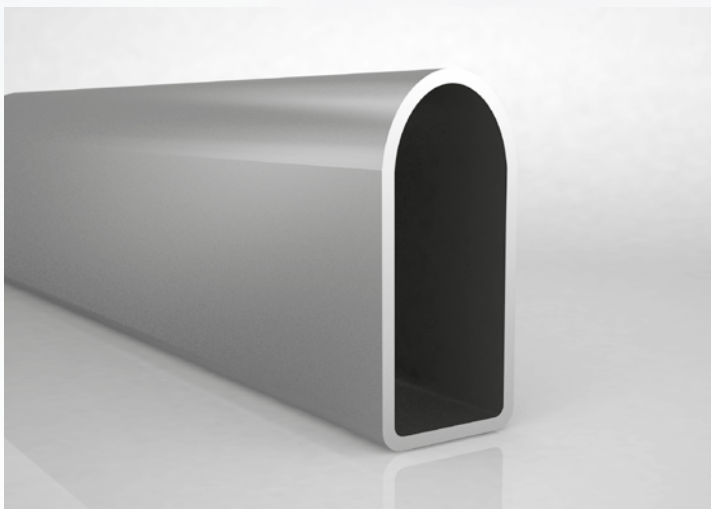
OVAL & ELIPSE PROFILES



DIMENSIONS	[S] THICKNESS (in)						
Outer Diameter	0,031	0,035	0,039	0,047	0,059	0,079	0,118
a x b (in)							
0,551"/0,314"							
0,629"/0,314"							
0,787"/0,393"							
0,984"/0,590"							
1,181"/0,393"							
1,181"/0,590"							
1,181"/2,755"							
1,377"/0,590"							
1,377"/0,787"							
1,574"/0,787"							
1,771"/0,590"							
1,889"/0,787"							
1,968"/0,787"							
1,968"/0,984"							
1,968"/1,181"							
2,165"/0,984"							
2,362"/0,787"							
2,362"/1,181"							
2,480"/1,968"							
2,677"/1,968"							
3,149"/0,984"							

Please contact us for your orders except for the mentioned measures above.

D PROFILES

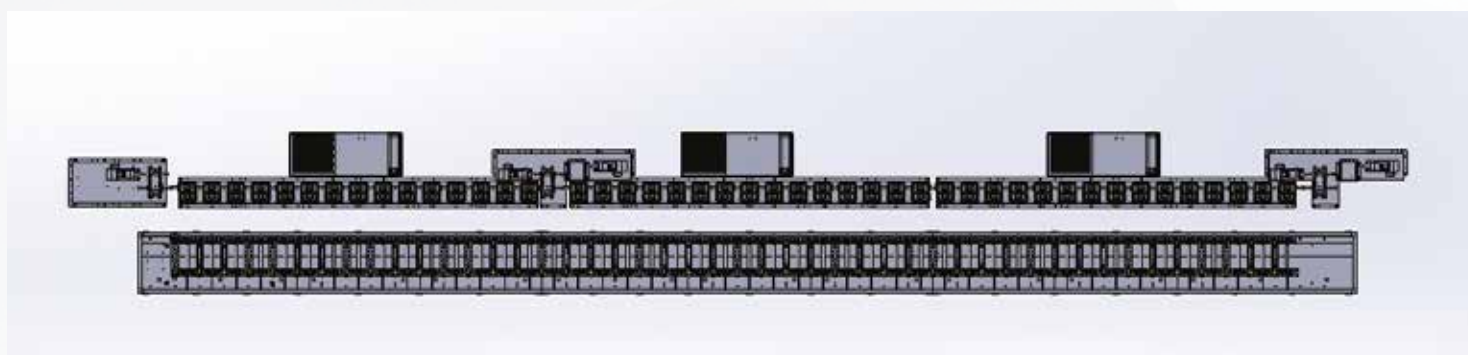
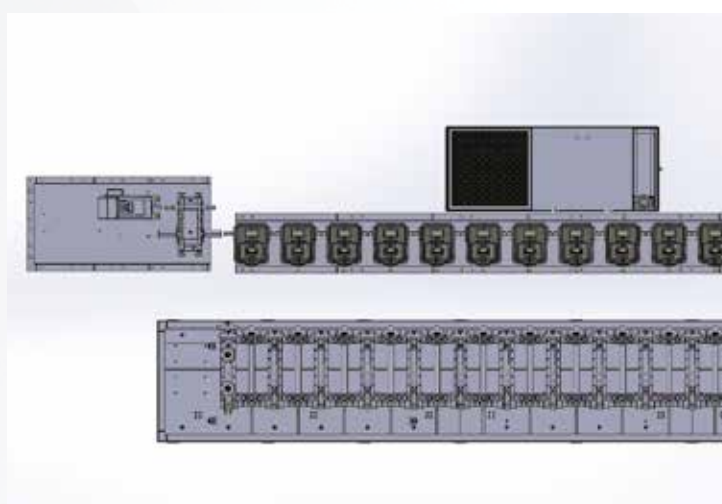
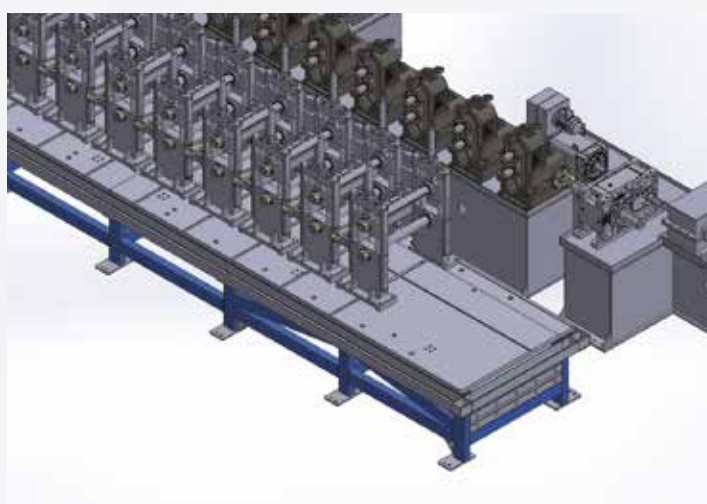
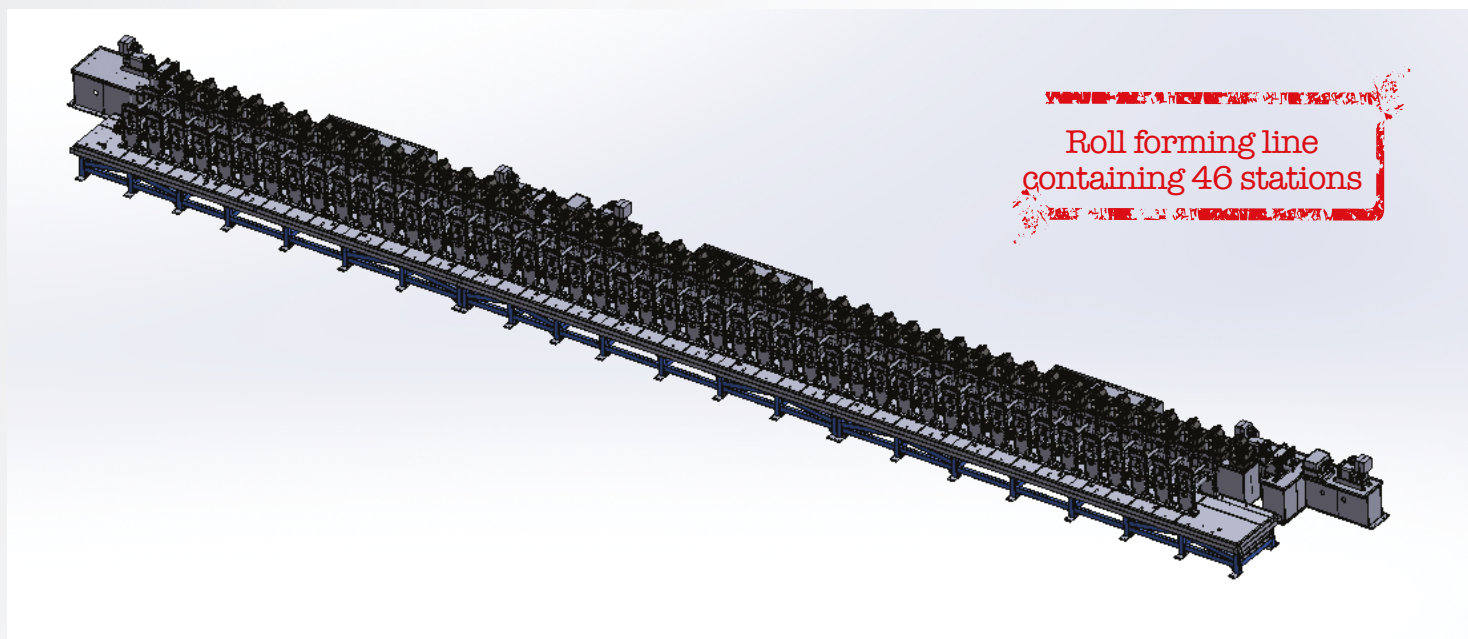


DIMENSIONS	[S] THICKNESS (in)							
Outer Diameter	0,024	0,028	0,031	0,035	0,039	0,047	0,059	0,079
a x b (in)								
1,181"/0,787"								
1,181"/0,590"								
1,181"/1,574"								
1,377"/0,787"								
1,574"/0,787"								
1,496"/1,023"								
1,574"/1,181"								
1,968"/0,984"								
2,362"/1,968"								

Please contact us for your orders except for the mentioned measures above.

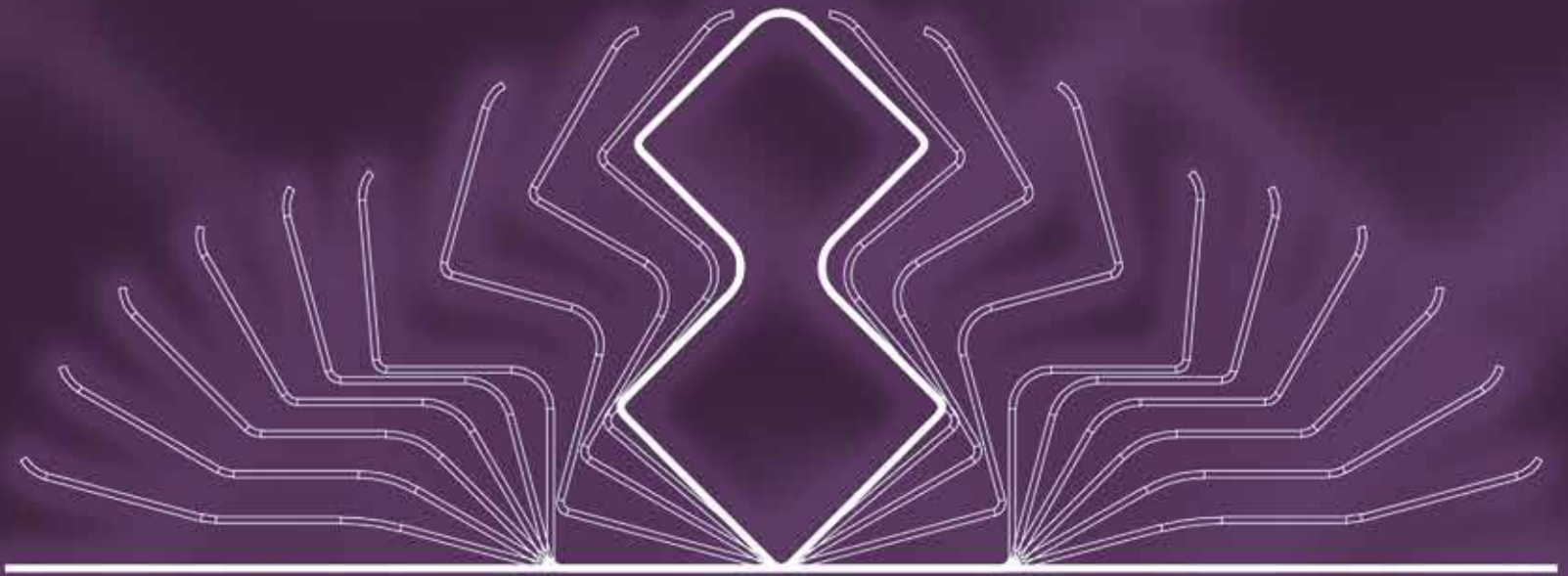
PACKING







KMC
STEEL & ROLL FORMING

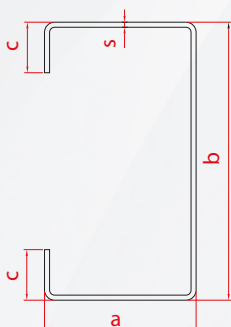
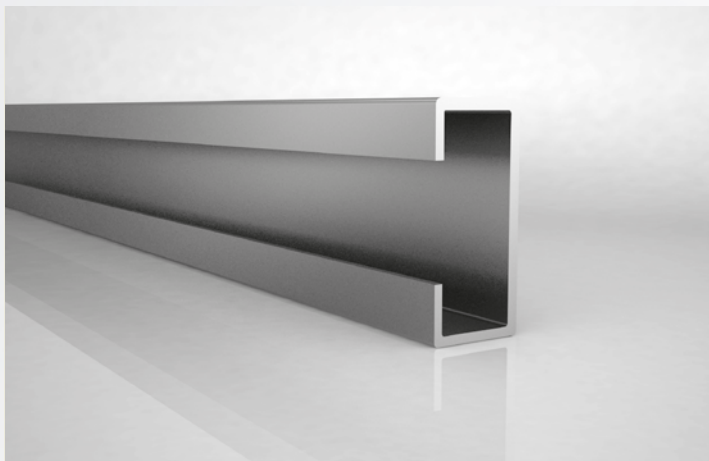


SPECIAL PROFILES

- C & U profiles
- Tubes and profiles in special cross-section,
- Air conditioning plant's construction profiles
- Profiles for furniture Industry
- Shelving profiles
- Conveyor profiles
- Roller blinds & awnings profiles
- Roller shutter profiles (octagonal shaped)

The design and production of our molds and fixtures that are used in every stage of the production are produced by our own experienced technical team. On special profiles punching, bending, edge reducing, edging, end cutting and similar requested applications can be performed to have them as semi and finished product.

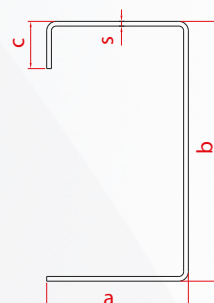
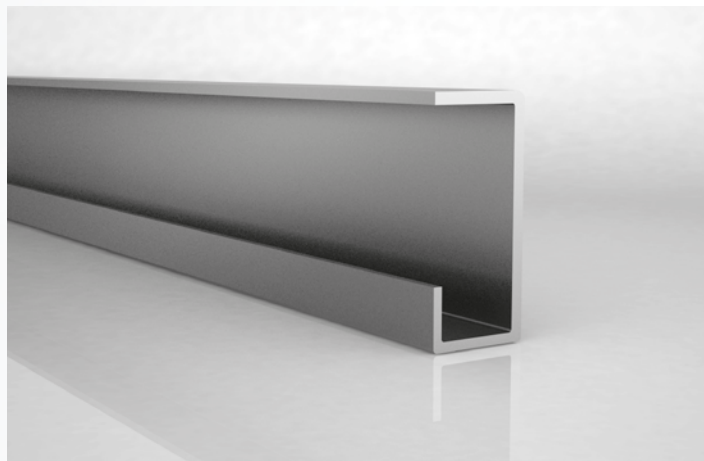
C PROFILES



Dimensions	A (in)	B (in)	C (in)	S (in)
Min.	0.197	0.394	0.394	0.020
Max.	9.646	19.685	5.906	0.315

All types of C profiles which their minimum and maximum measures are mentioned above are manufactured by our company.

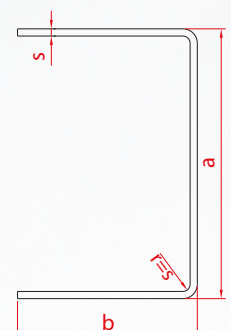
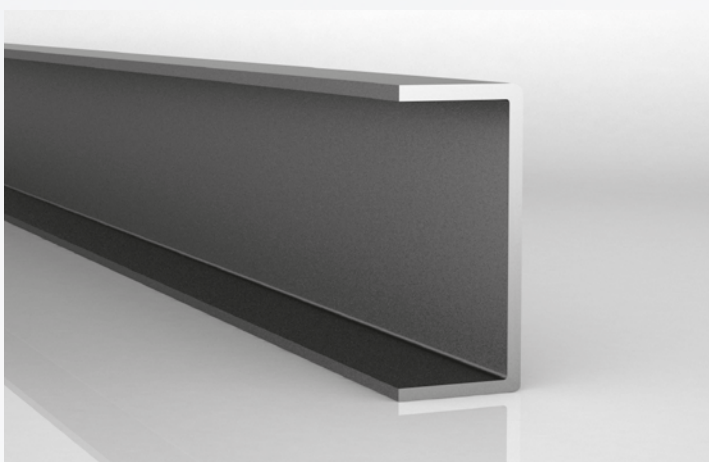
C PROFILES



Dimensions	A (in)	B (in)	C (in)	S (in)
Min.	0.197	0.394	0.394	0.020
Max.	9.646	19.685	5.906	0.315

All types of C profiles which their minimum and maximum measures are mentioned above are manufactured by our company.

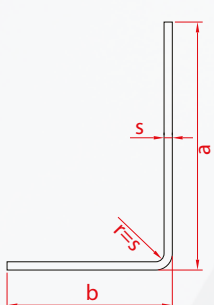
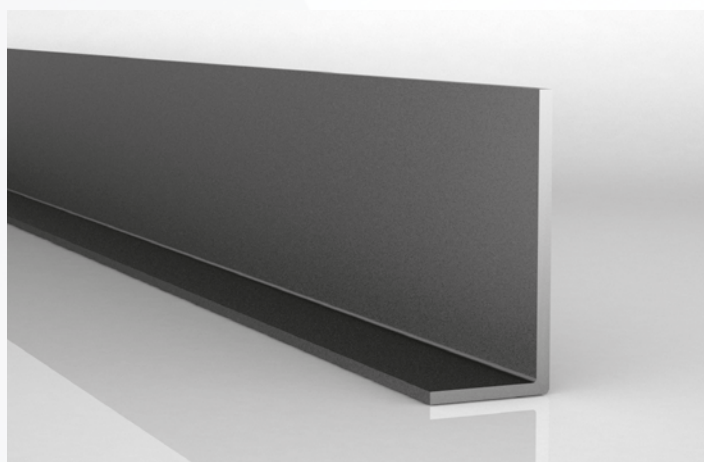
U PROFILES



Dimensions	A (in)	B (in)	S (in)
Min.	0.197	0.394	0.020
Max.	19.685	9.646	0.315

All types of U profiles which their minimum and maximum measures are mentioned above are manufactured by our company.

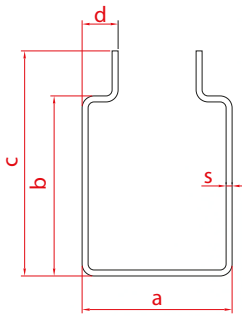
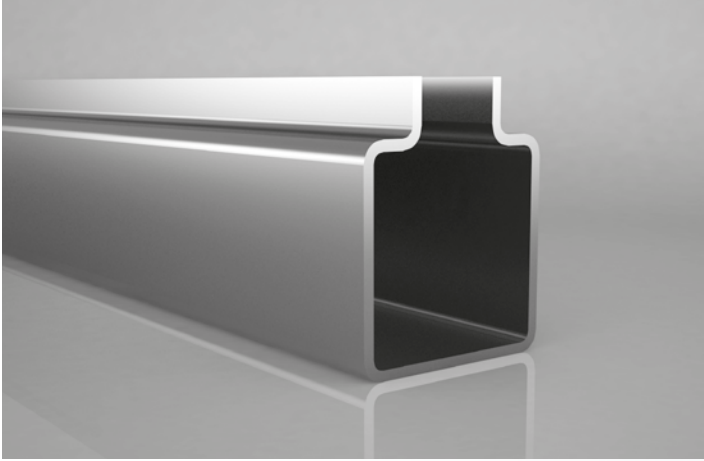
L PROFILES



Dimensions	A (in)	B (in)	S (in)
Min.	0.394	0.197	0.020
Max.	19.685	9.646	0.315

All types of L profiles which their minimum and maximum measures are mentioned above are manufactured by our company.

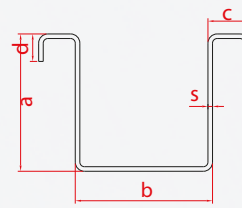
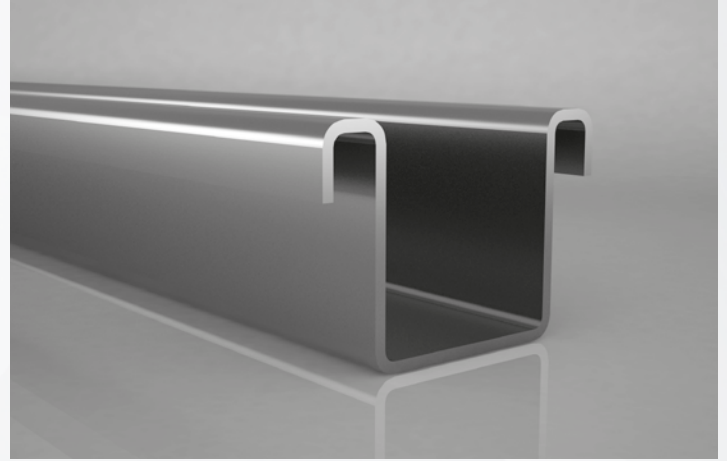
STANDARD OPEN SHAPED PROFILES



Dimensions	A (in)	B (in)	C (in)	D (in)	S (in)
Min.	1.181	1.181	2.165	0.315	0.020
Max.	15.748	9.055	9.646	5.906	0.315

All types of profiles which their minimum and maximum measures are mentioned above are manufactured by our company.

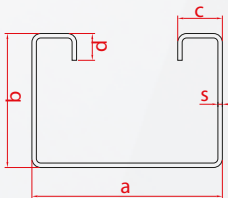
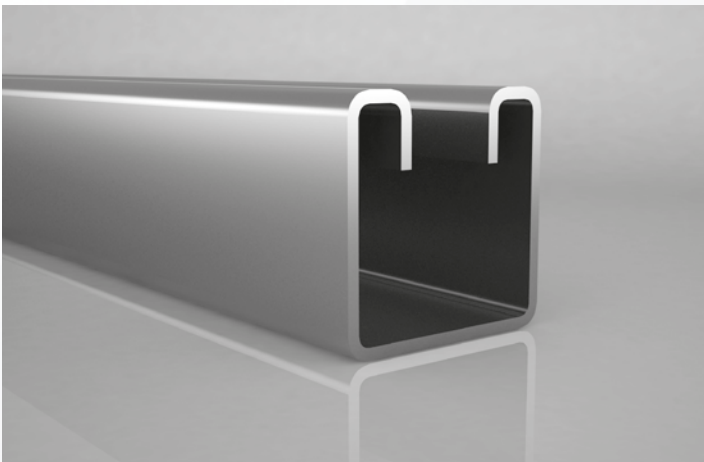
STANDARD OPEN SHAPED PROFILES



Dimensions	A (in)	B (in)	C (in)	D (in)	S (in)
Min.	0.787	0.787	0.394	0.197	0.020
Max.	15.748	9.646	3.937	1.969	0.315

All types of profiles which their minimum and maximum measures are mentioned above are manufactured by our company.

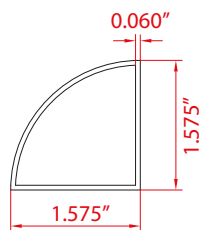
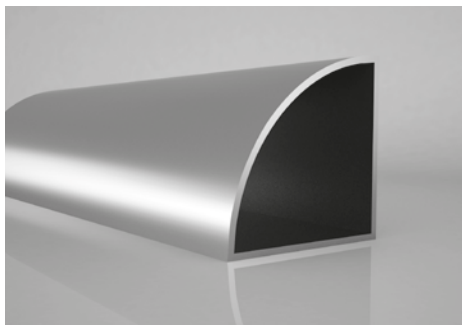
STANDARD OPEN SHAPED PROFILES



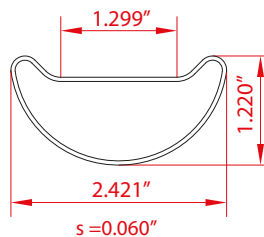
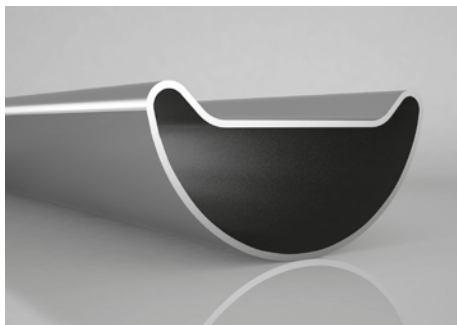
Dimensions	A (in)	B (in)	C (in)	D (in)	S (in)
Min.	0.787	0.787	0.394	0.197	0.020
Max.	15.748	9.646	3.937	1.969	0.315

All types of profiles which their minimum and maximum measures are mentioned above are manufactured by our company.

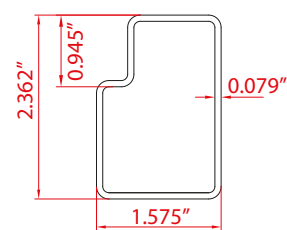
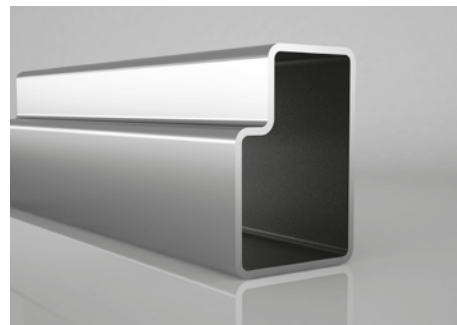




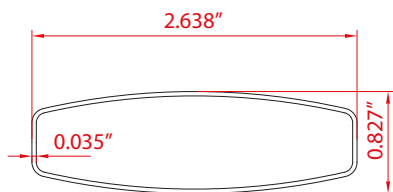
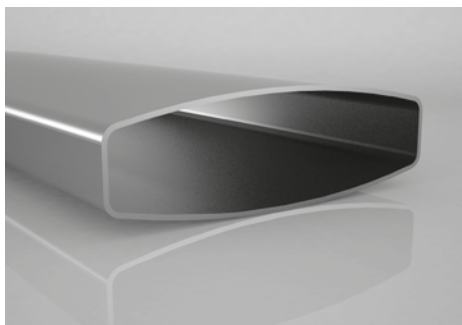
OZL-01



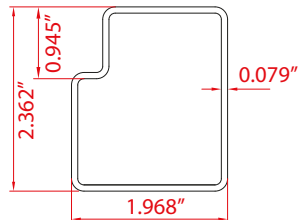
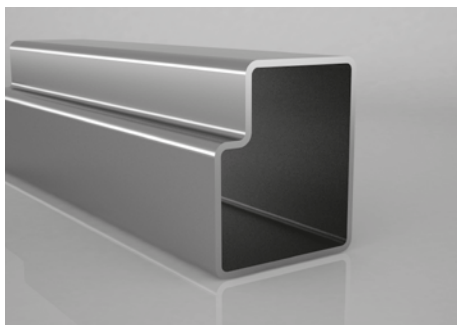
OZL-02



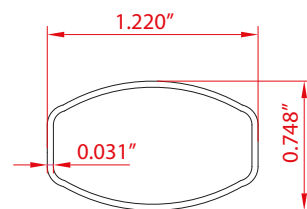
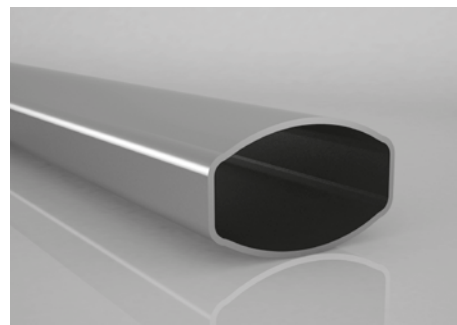
OZL-03



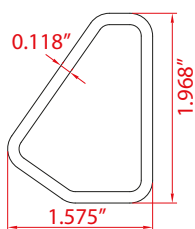
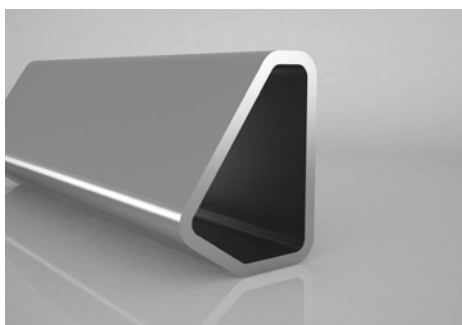
OZL-04



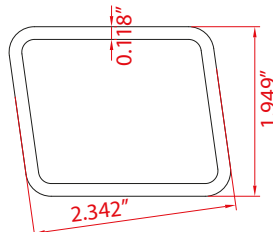
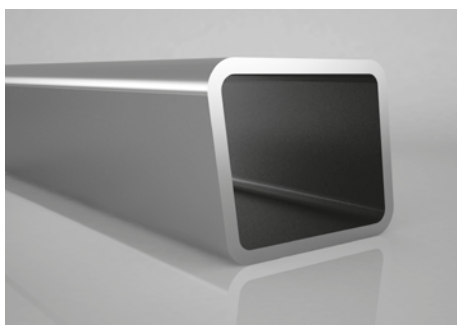
OZL-05



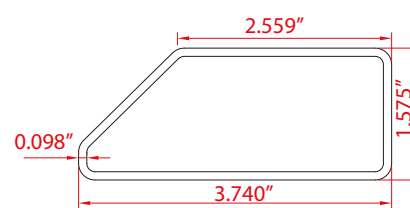
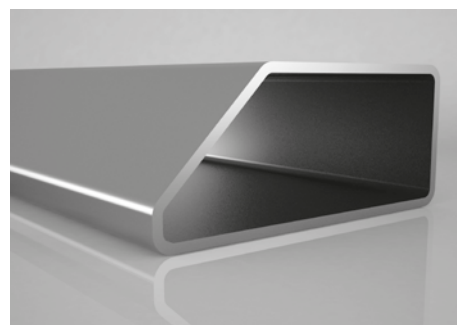
OZL-06



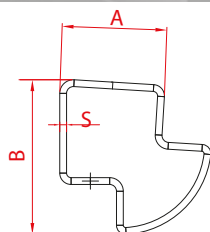
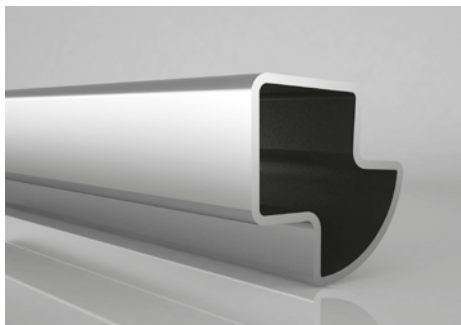
OZL-07



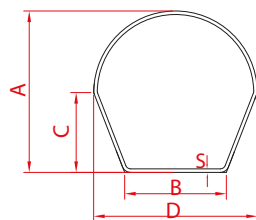
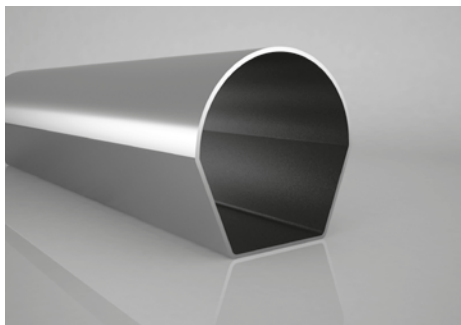
OZL-08



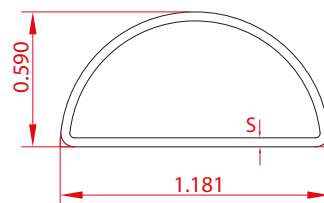
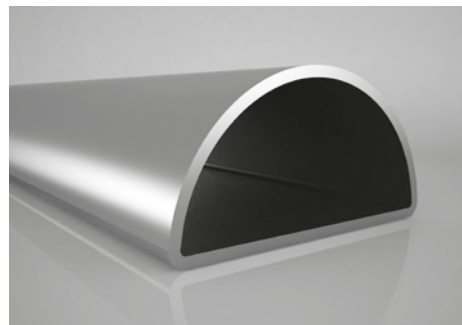
OZL-09



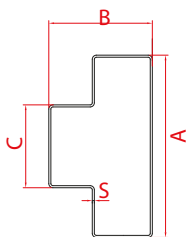
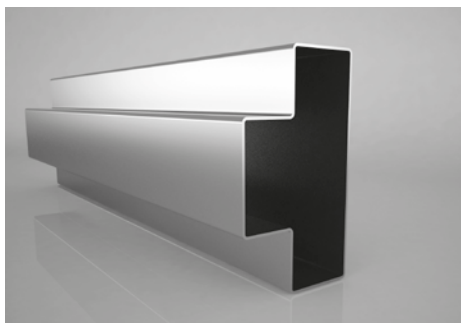
OZL-10



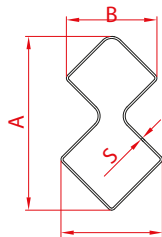
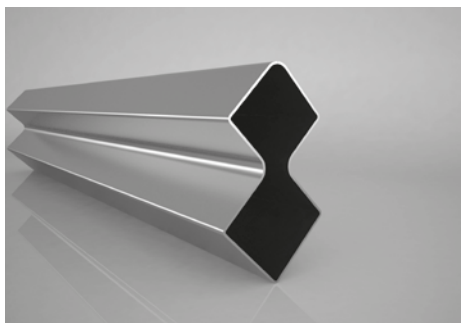
OZL-11



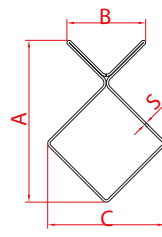
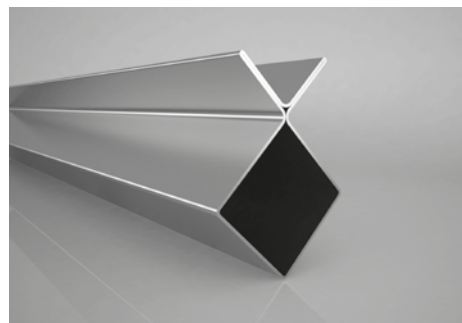
OZL-12



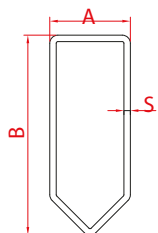
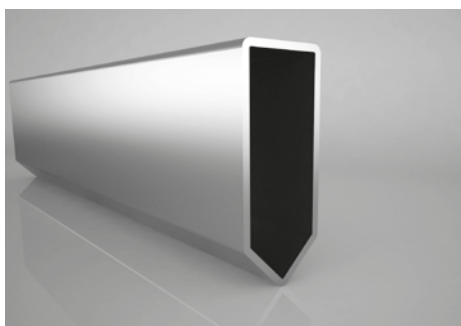
OZL-13



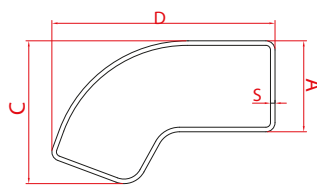
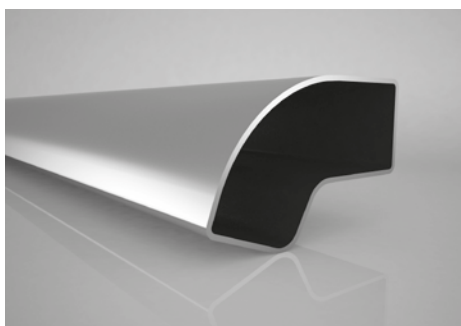
OZL-14



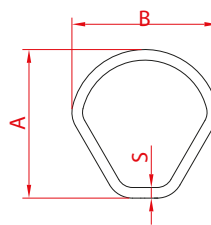
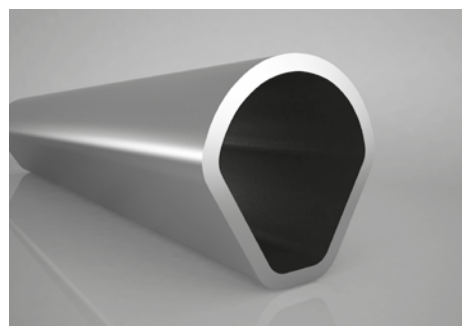
OZL-15



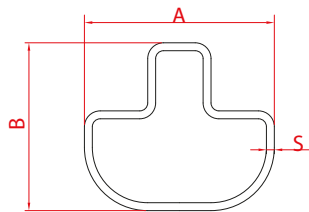
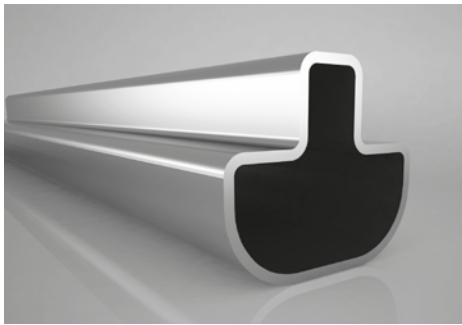
OZL-16



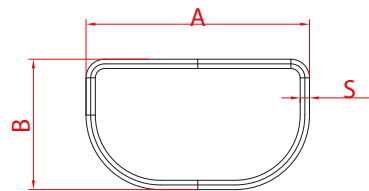
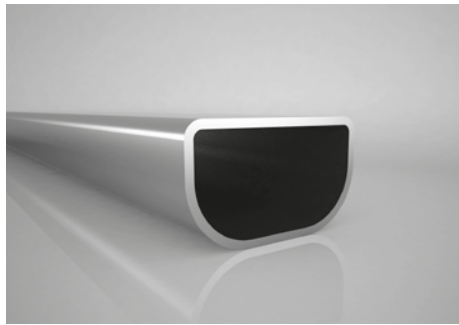
OZL-17



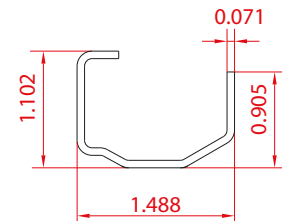
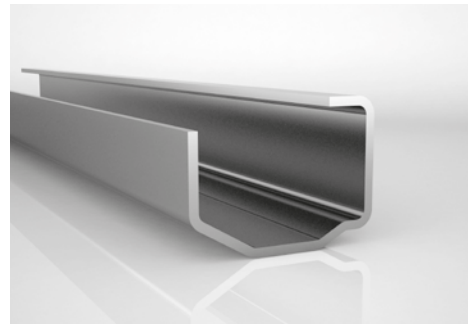
OZL-18



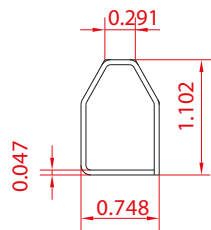
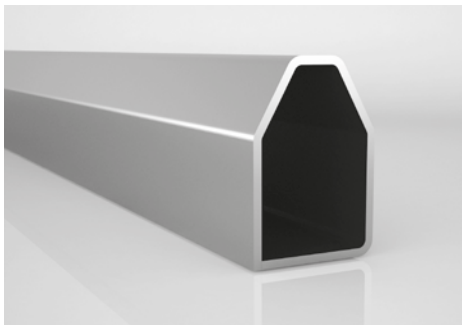
OZL-19



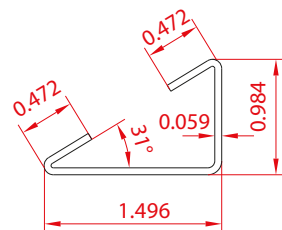
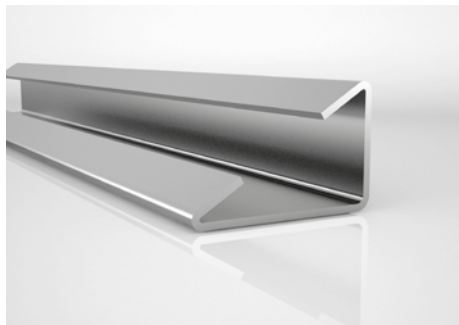
OZL-20



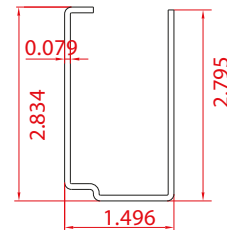
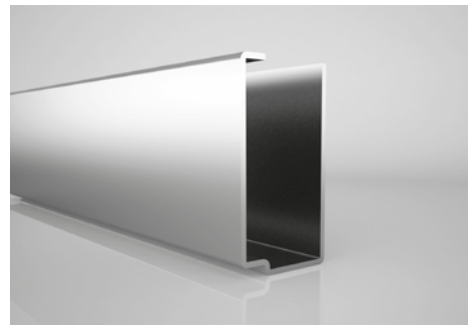
OZL-21



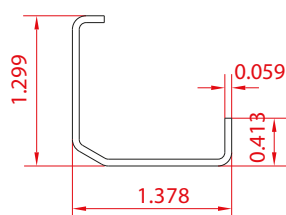
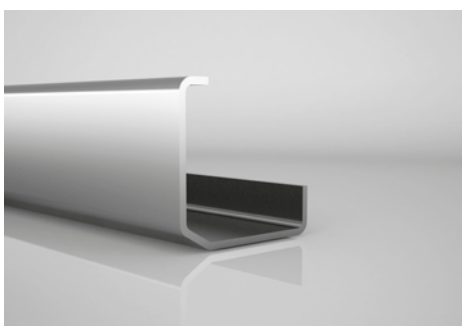
OZL-22



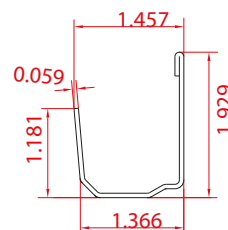
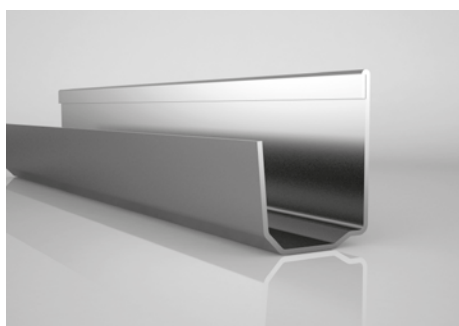
OZL-23



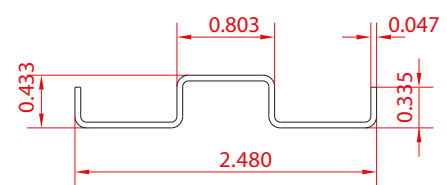
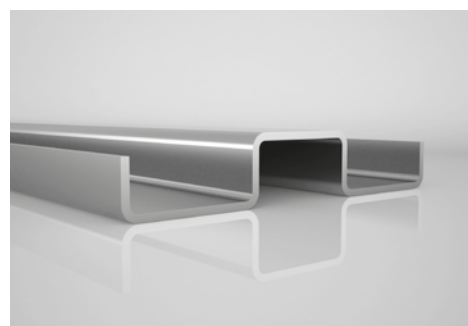
OZL-24



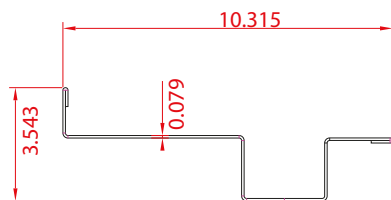
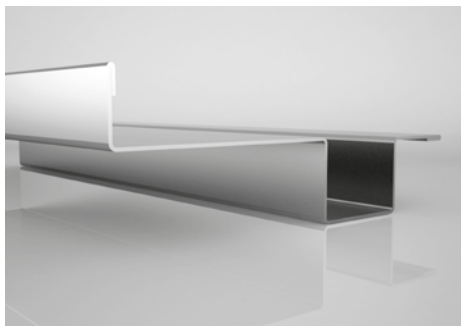
OZL-25



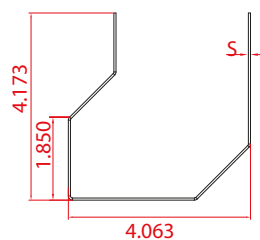
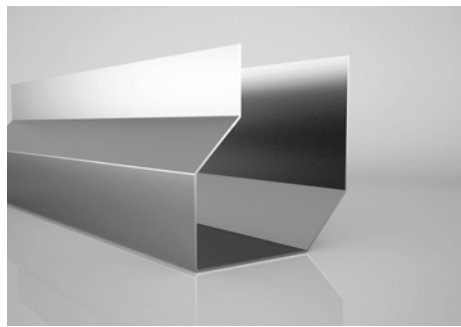
OZL-26



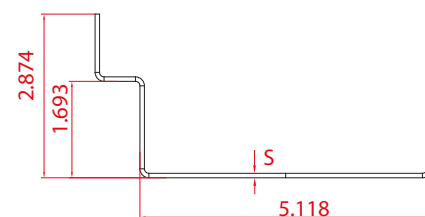
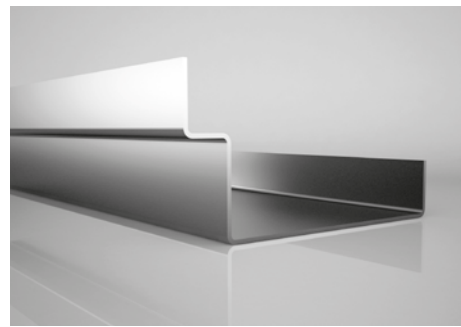
OZL-27



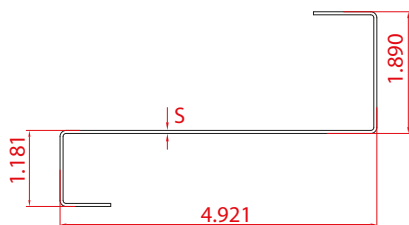
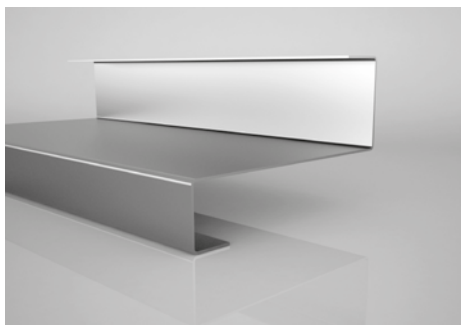
OZL-28



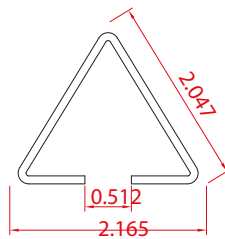
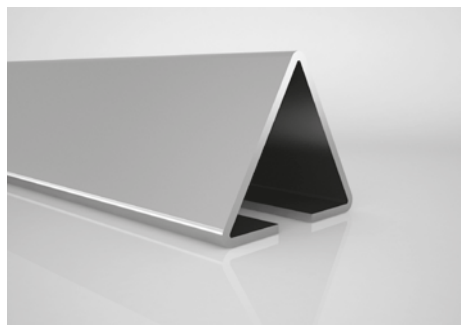
OZL-29



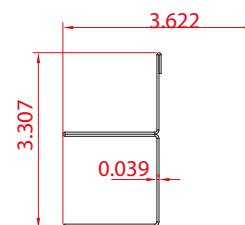
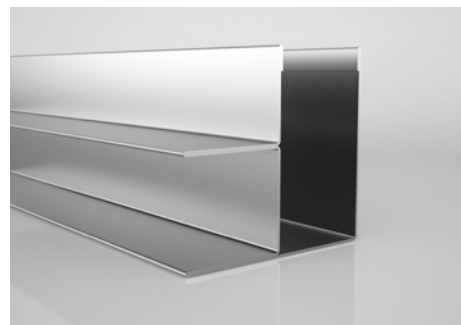
OZL-30



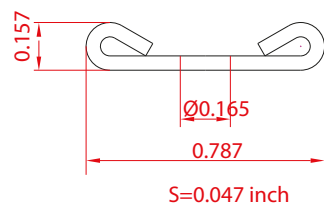
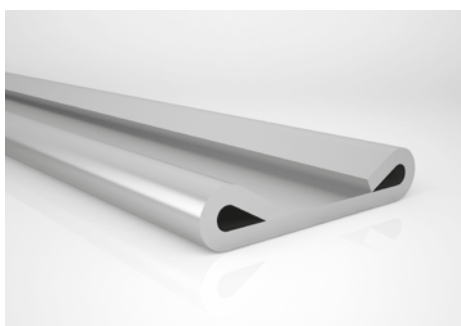
OZL-31



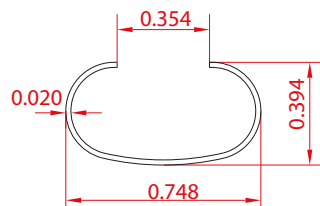
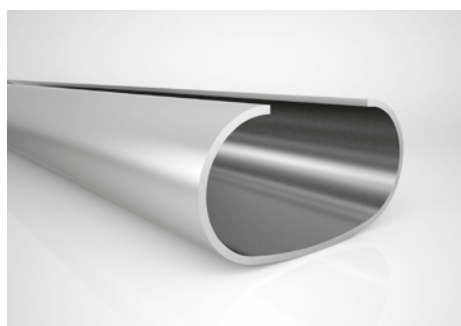
OZL-32



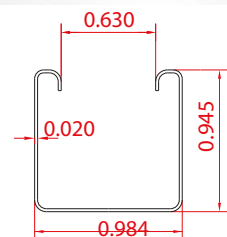
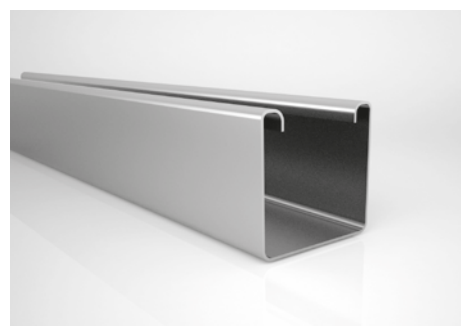
OZL-33



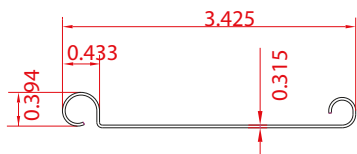
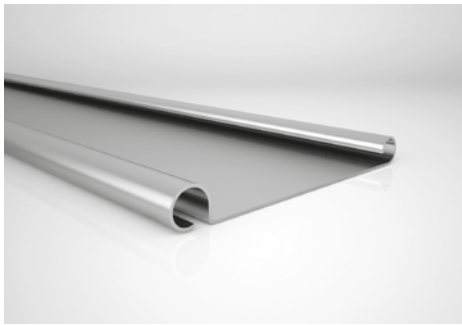
OZL-34



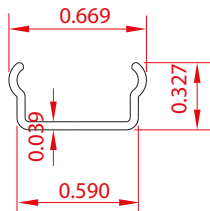
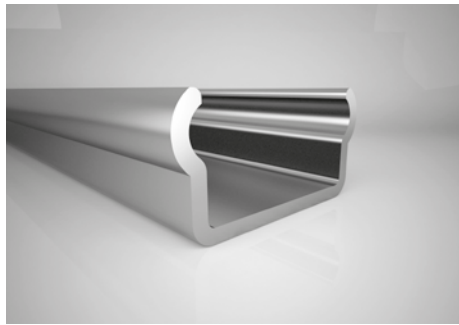
OZL-35



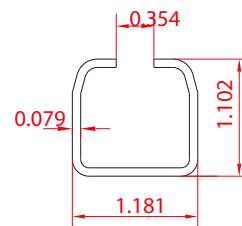
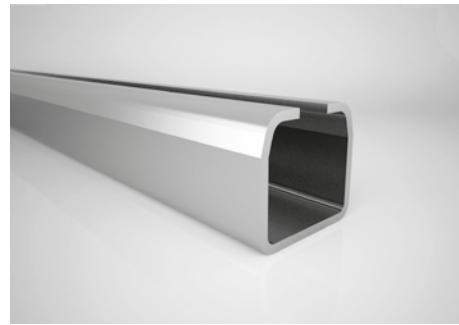
OZL-36



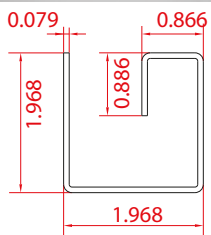
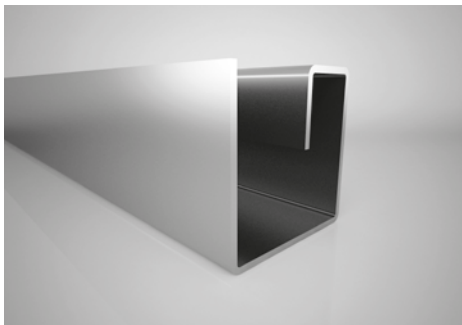
OZL-37



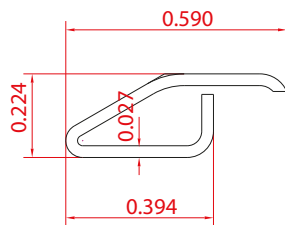
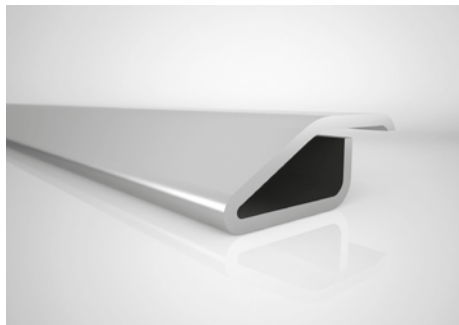
OZL-38



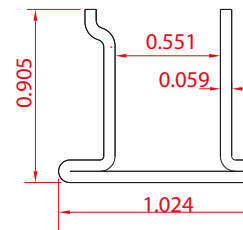
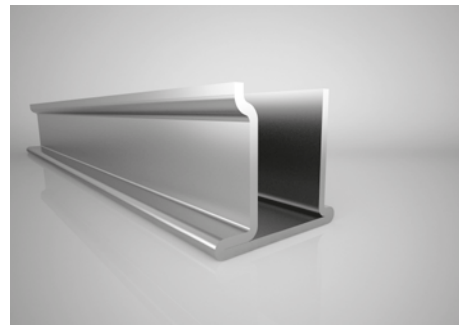
OZL-39



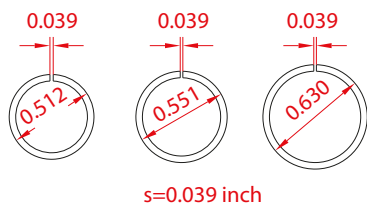
OZL-40



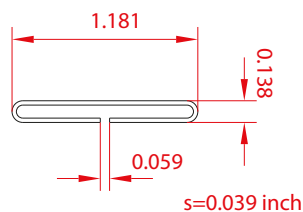
OZL-41



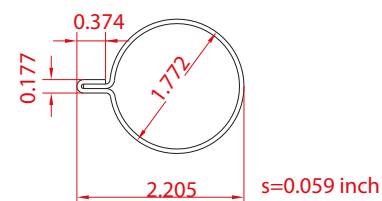
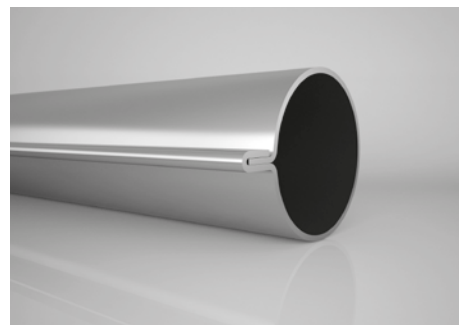
OZL-42



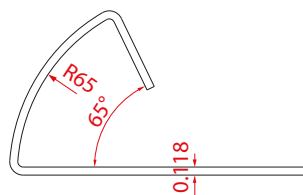
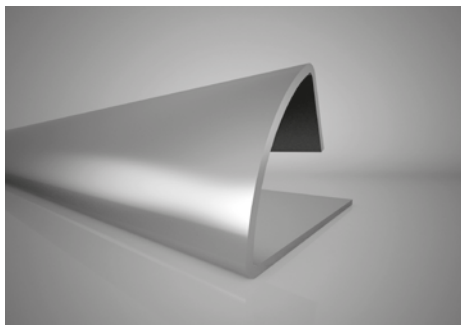
OZL-43



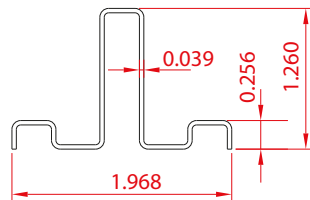
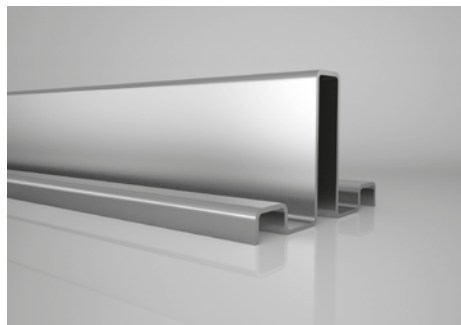
OZL-44



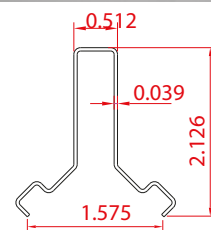
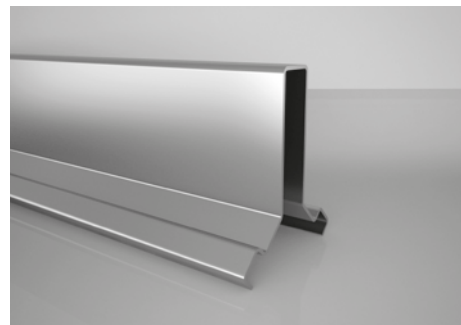
OZL-45



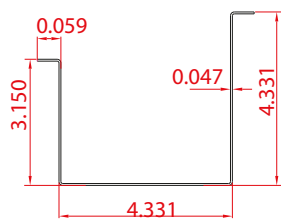
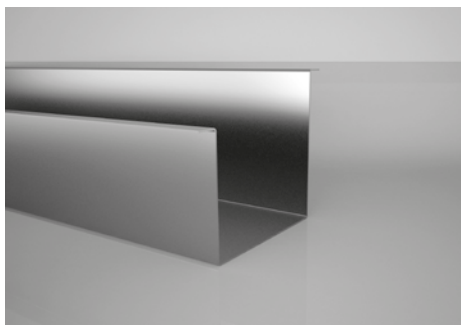
OZL-46



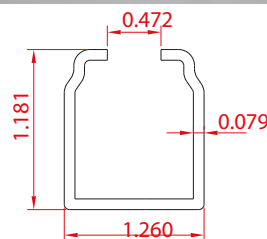
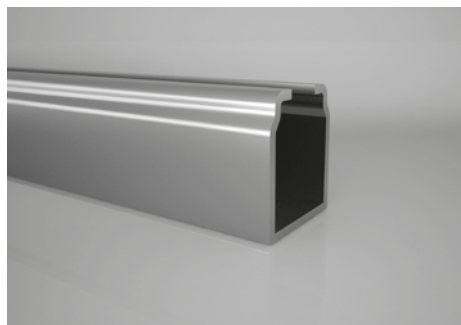
OZL-47



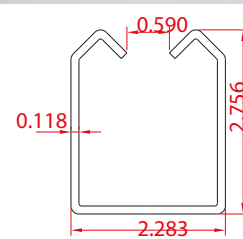
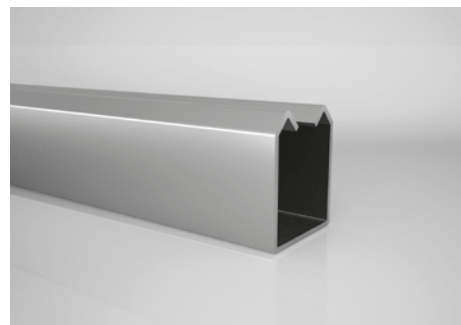
OZL-48



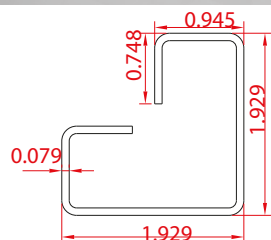
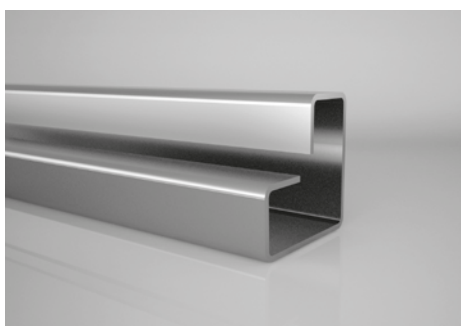
OZL-49



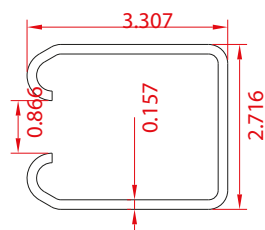
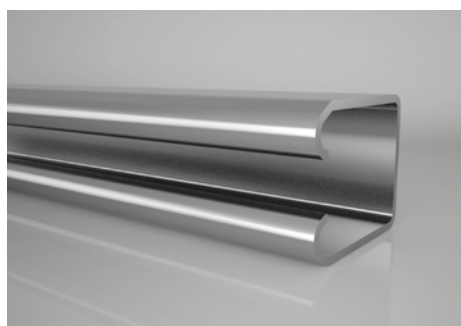
OZL-50



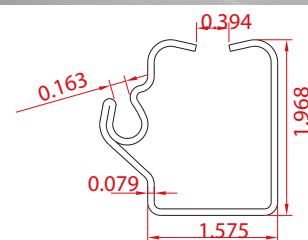
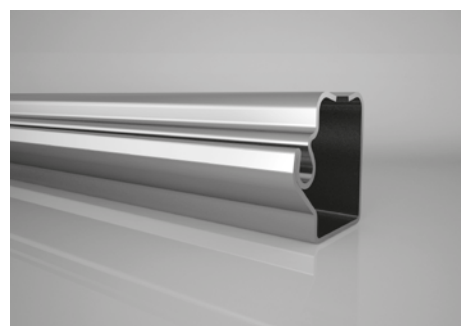
OZL-51



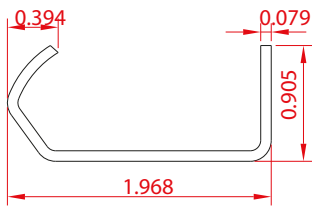
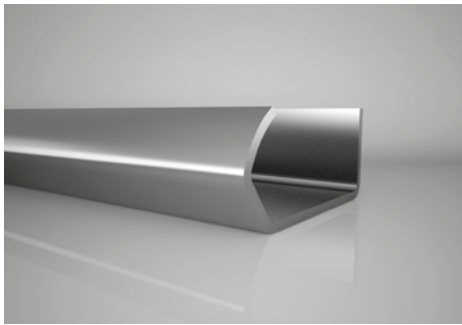
OZL-52



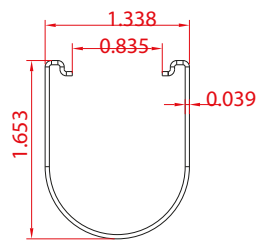
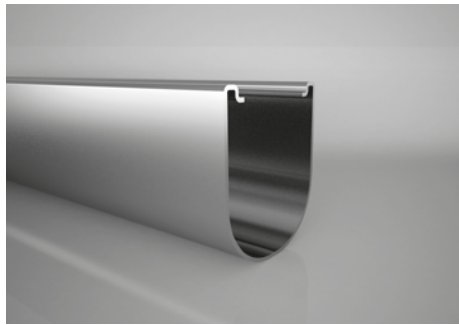
OZL-53



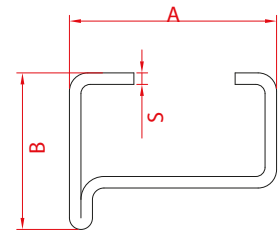
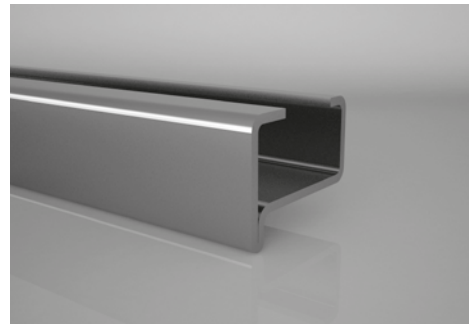
OZL-54



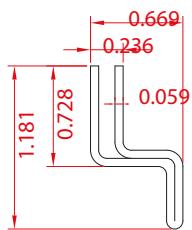
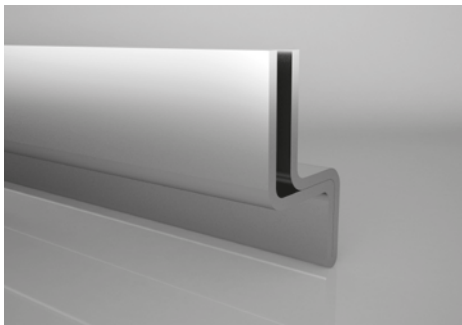
OZL-55



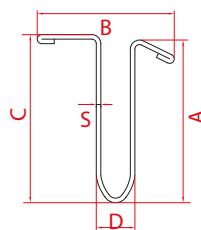
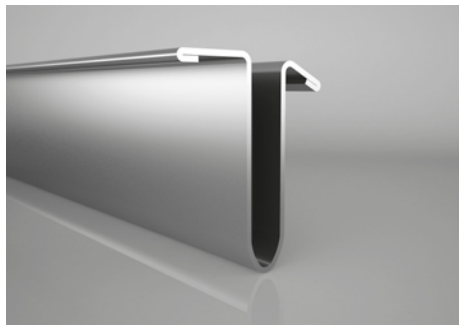
OZL-56



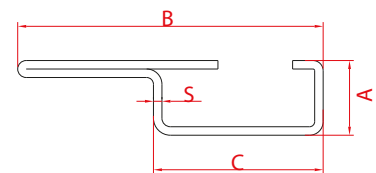
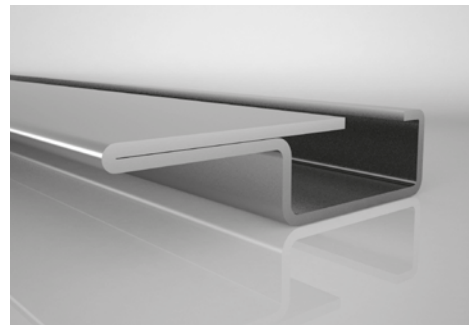
OZL-57



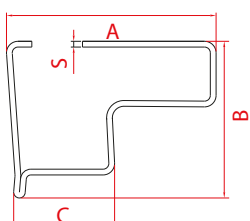
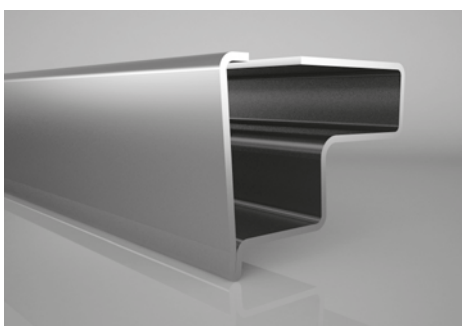
OZL-58



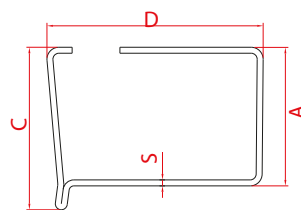
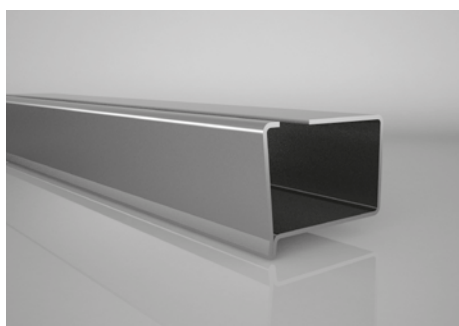
OZL-59



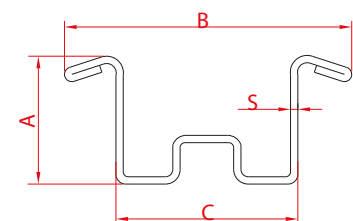
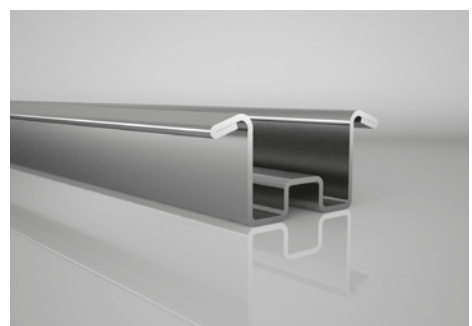
OZL-60



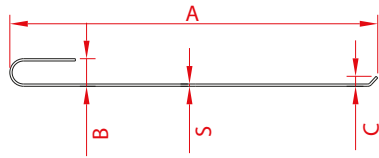
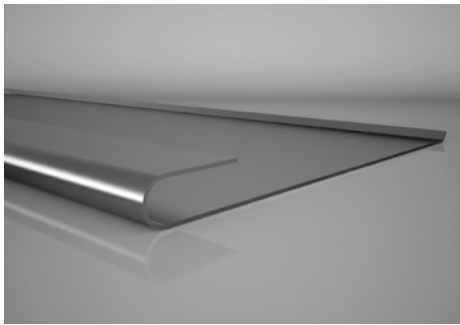
OZL-61



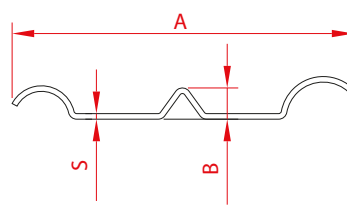
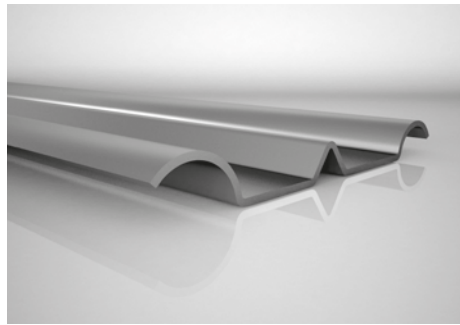
OZL-62



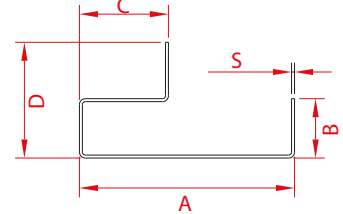
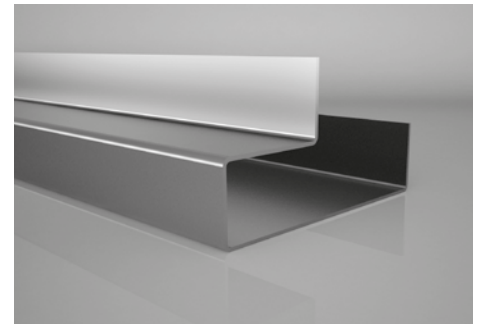
OZL-63



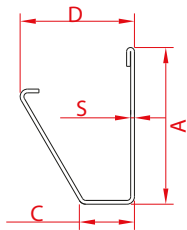
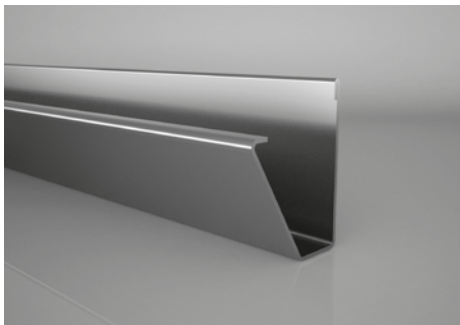
OZL-64



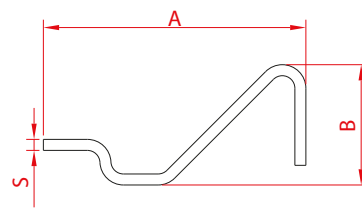
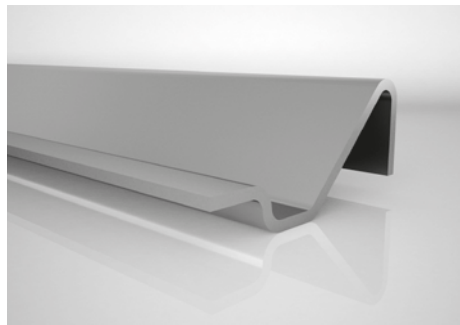
OZL-65



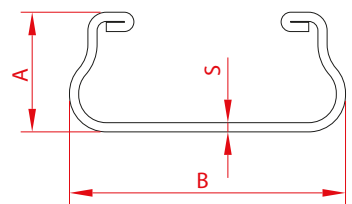
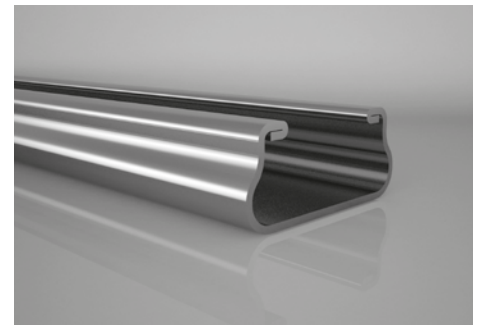
OZL-66



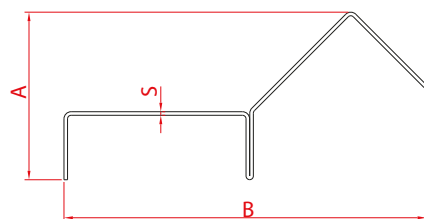
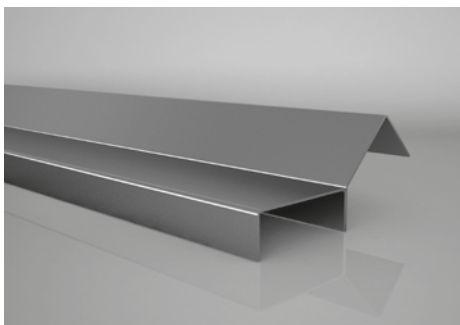
OZL-67



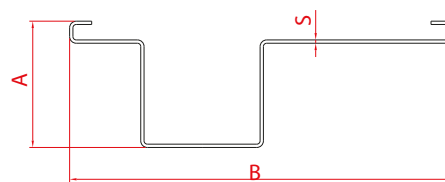
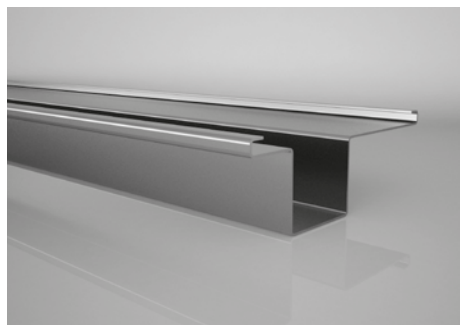
OZL-68



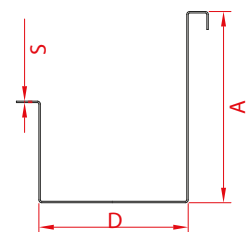
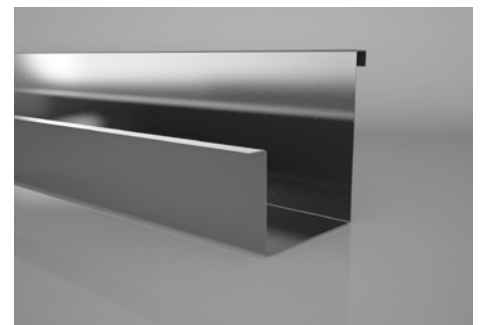
OZL-69



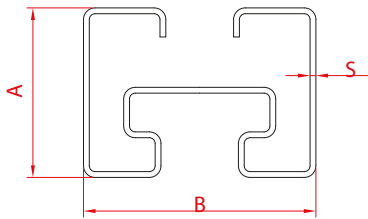
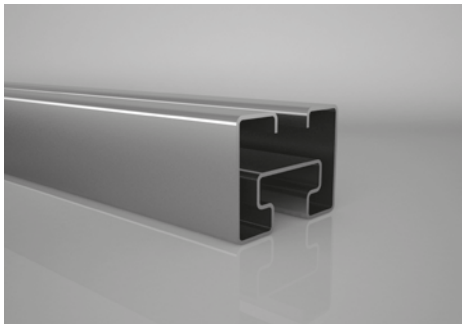
OZL-70



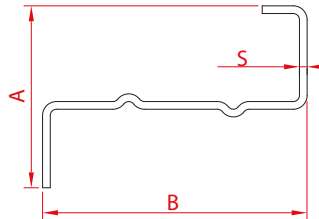
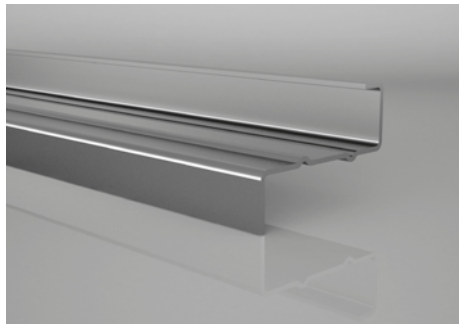
OZL-71



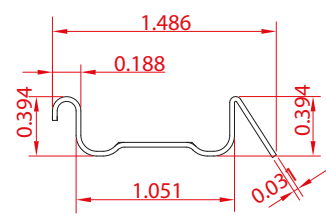
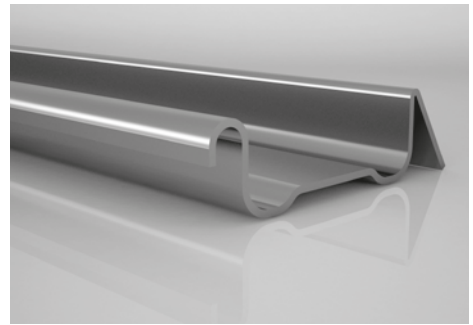
OZL-72



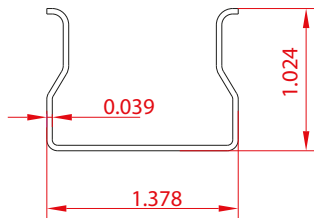
OZL-73



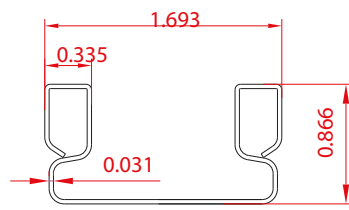
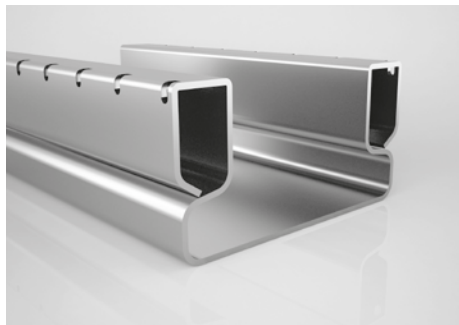
OZL-74



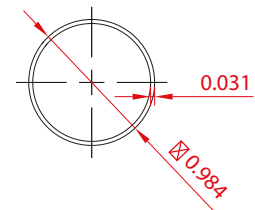
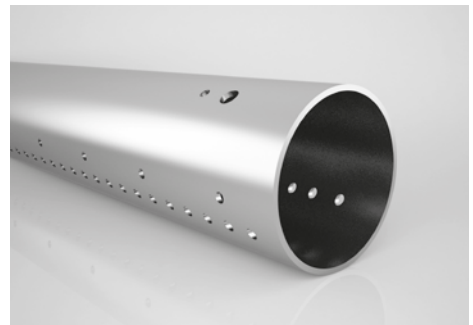
OZL-75



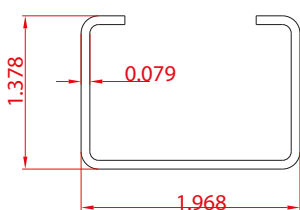
OZL-76



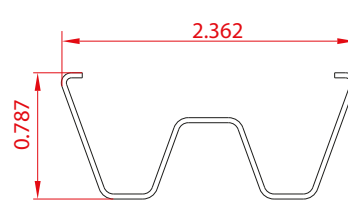
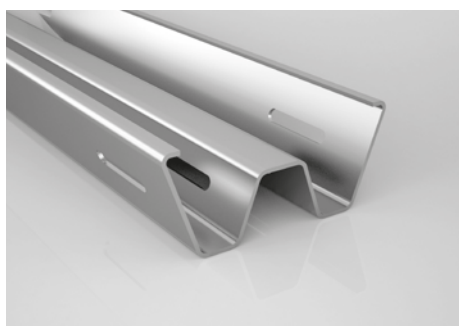
OZL-77



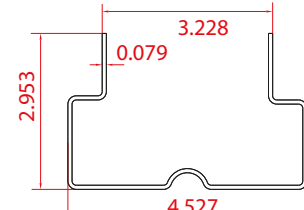
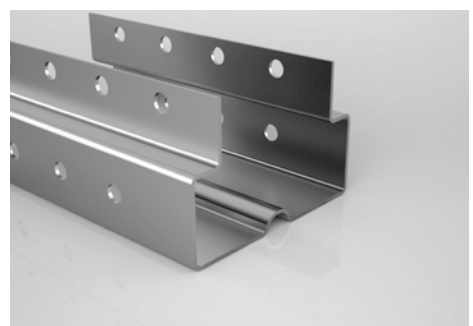
OZL-78



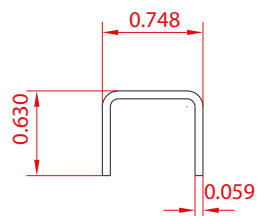
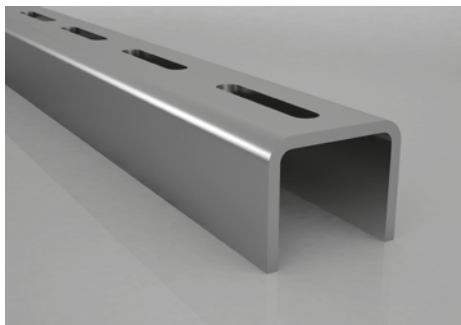
OZL-79



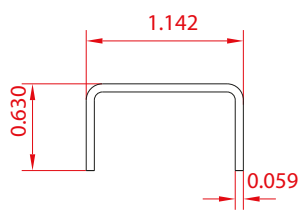
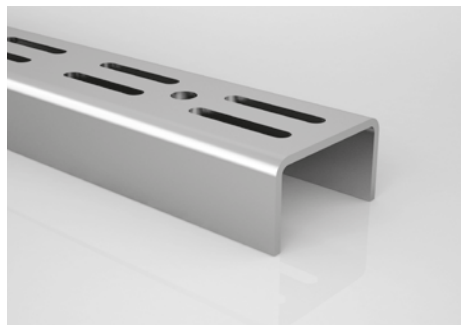
OZL-80



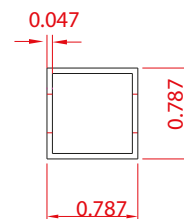
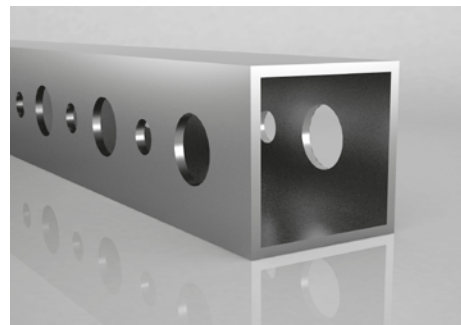
OZL-81



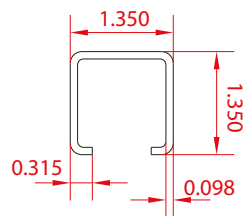
OZL-82



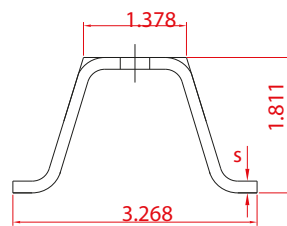
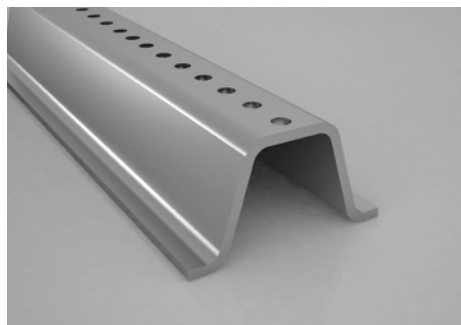
OZL-83



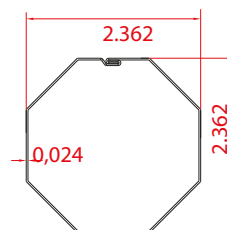
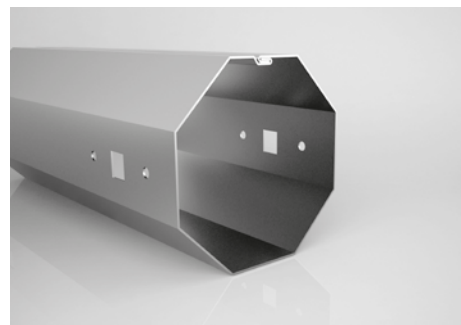
OZL-84



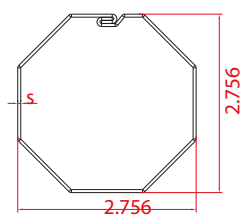
OZL-85



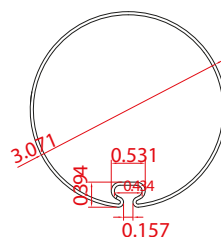
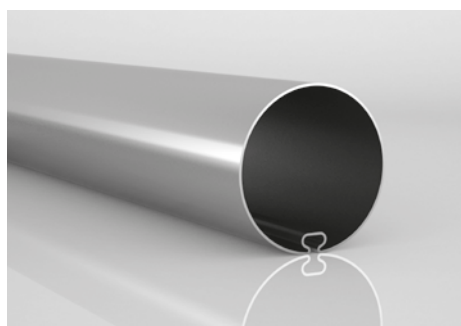
OZL-86



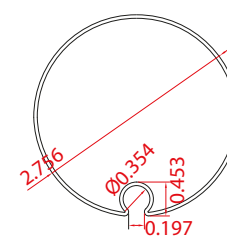
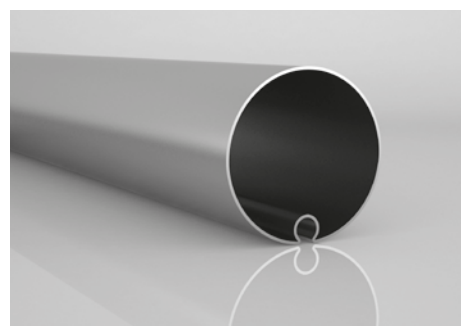
OZL-87



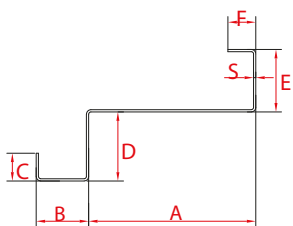
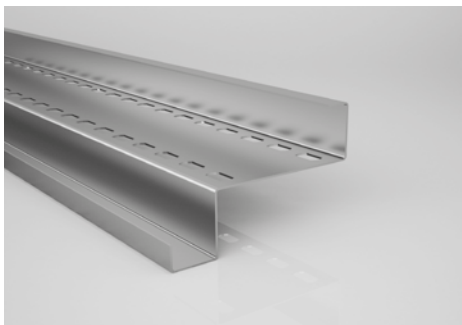
OZL-88



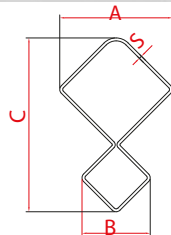
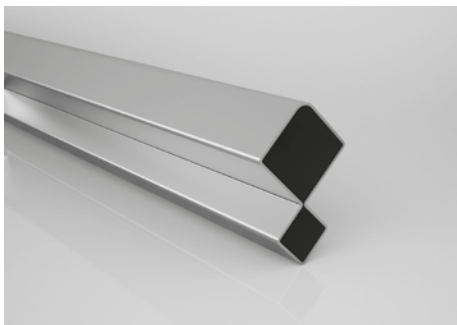
OZL-89



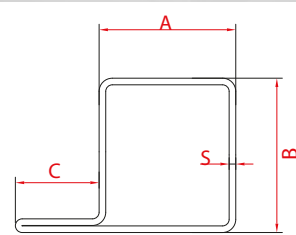
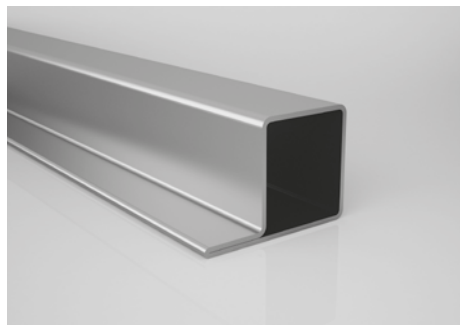
OZL-90



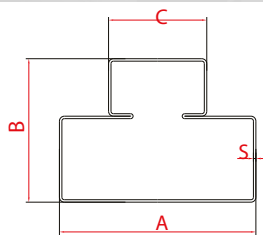
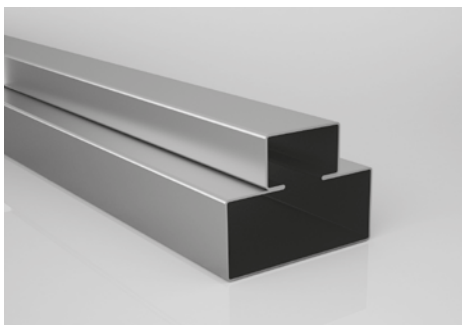
OZL-91



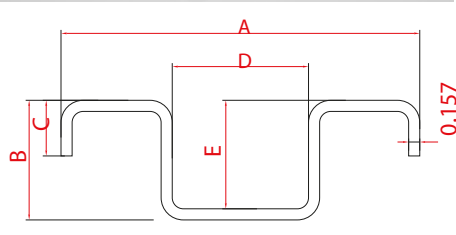
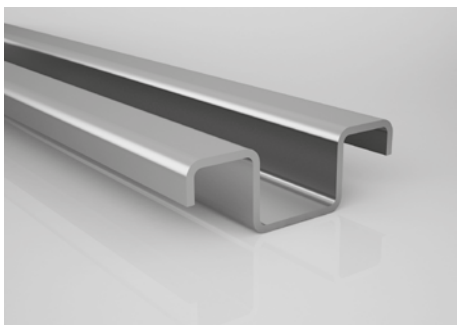
OZL-92



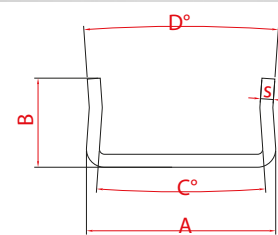
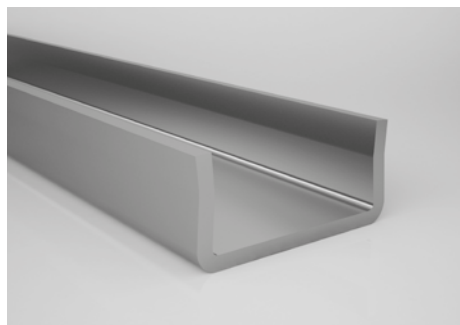
OZL-93



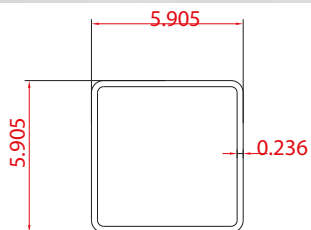
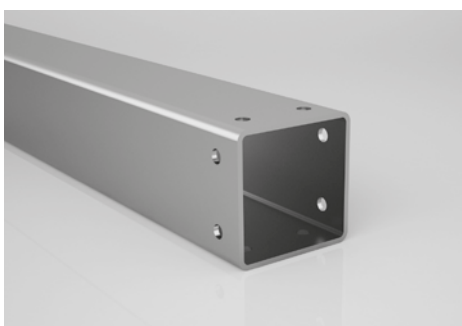
OZL-94



OZL-95

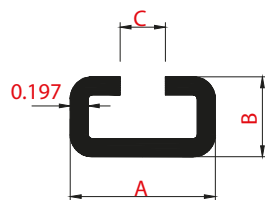
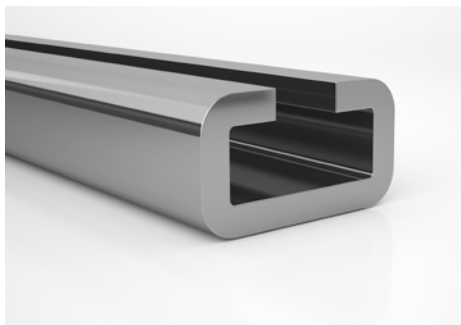


OZL-96

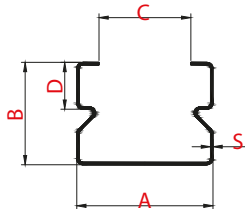
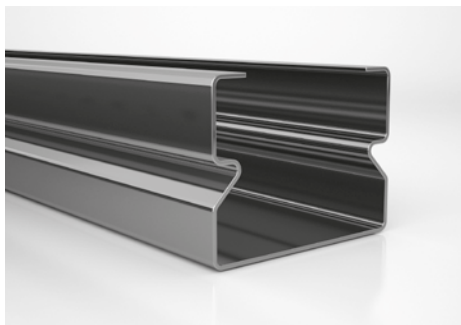


OZL-97

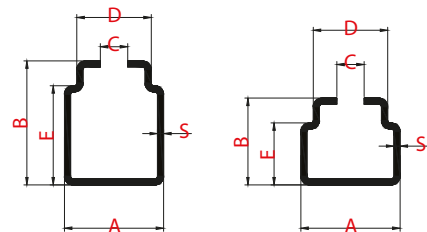
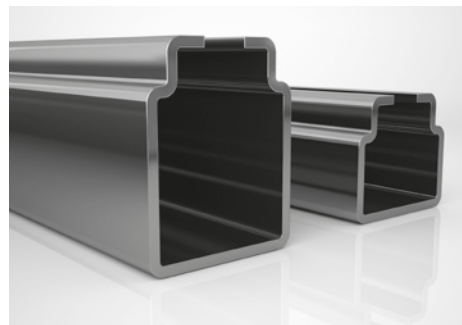




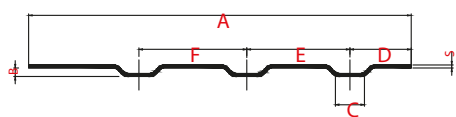
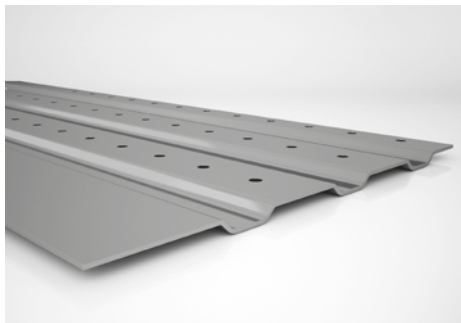
OZL-98



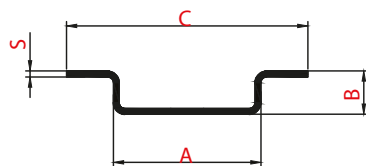
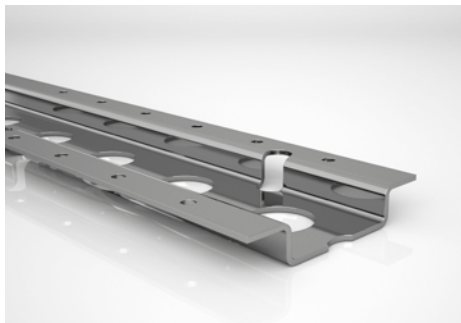
OZL-99



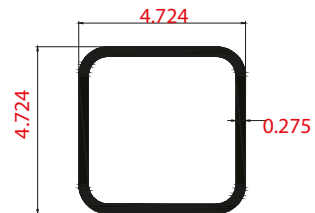
OZL-100



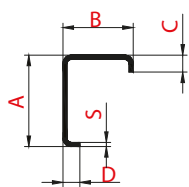
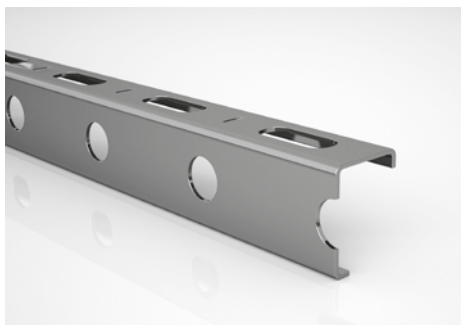
OZL-101



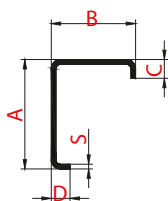
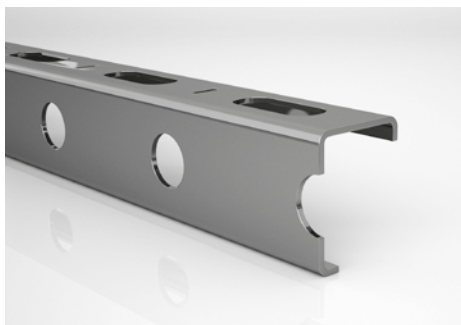
OZL-102



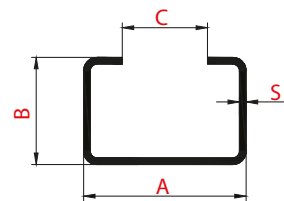
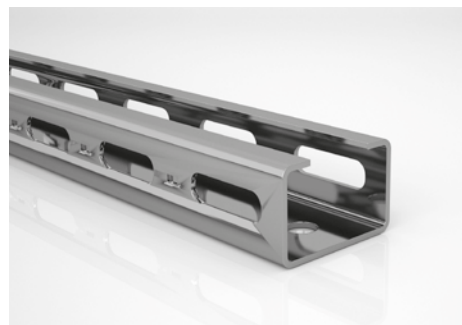
OZL-103



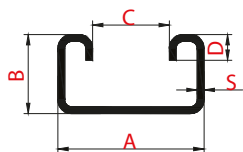
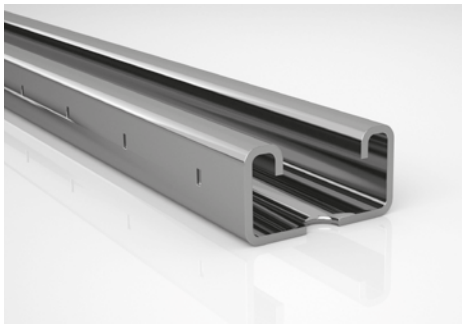
OZL-104



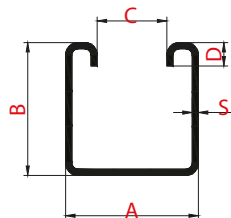
OZL-105



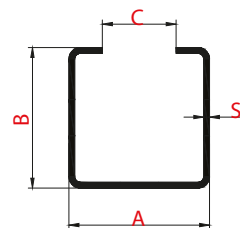
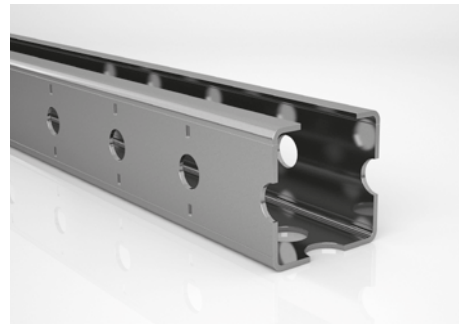
OZL-106



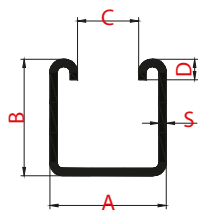
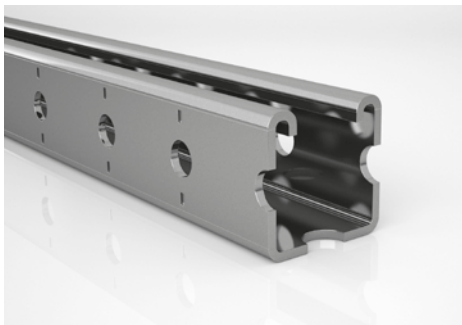
OZL-107



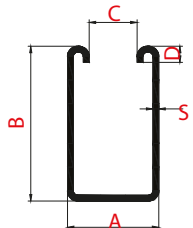
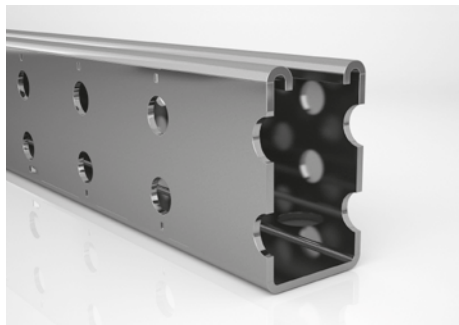
OZL-108



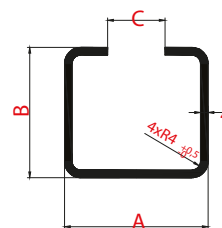
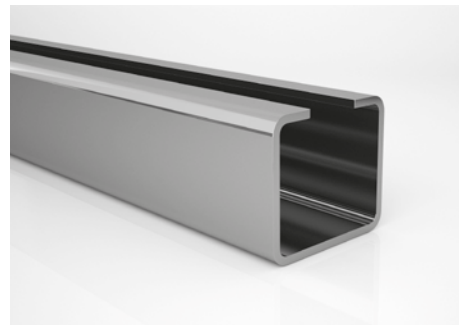
OZL-109



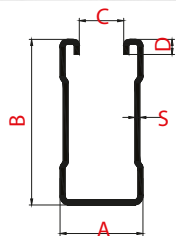
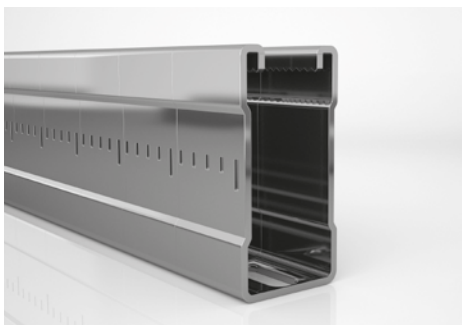
OZL-110



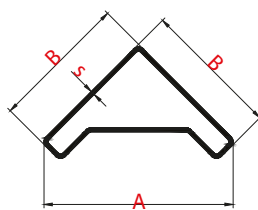
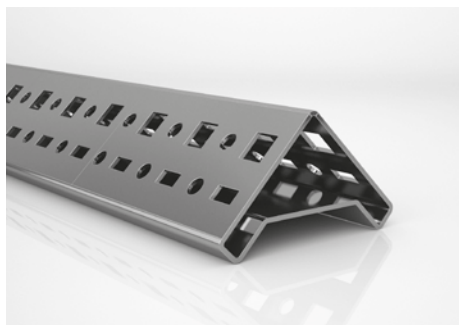
OZL-111



OZL-112



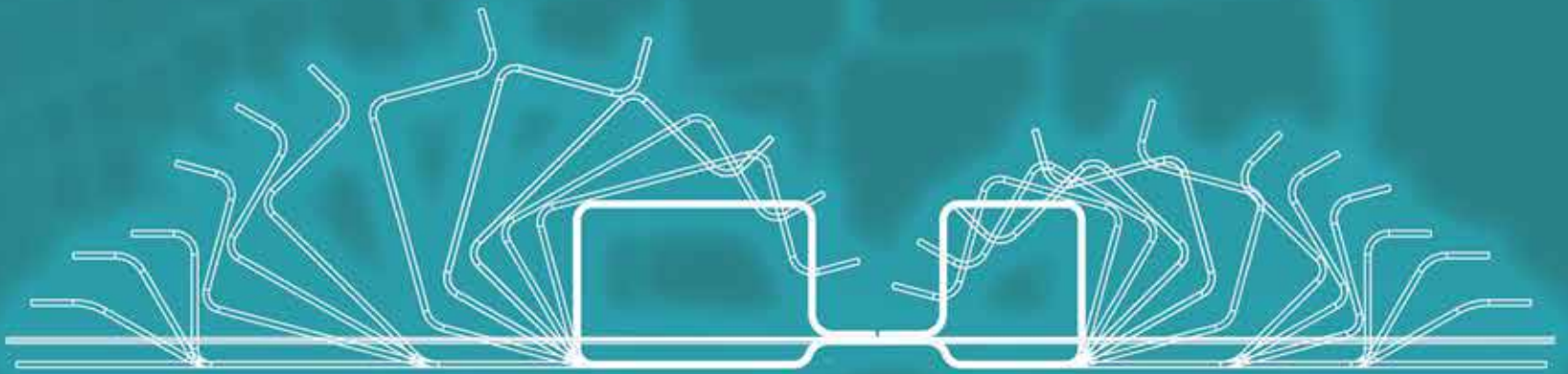
OZL-113



OZL-114



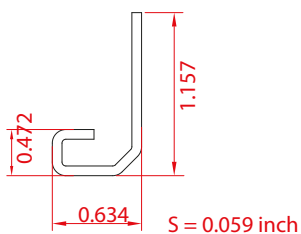
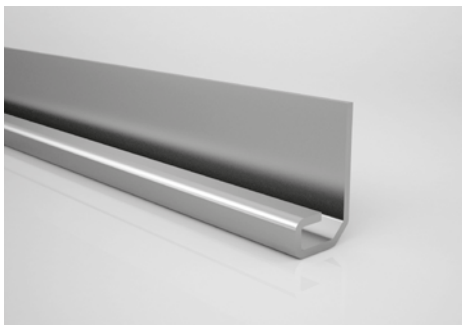
KMC
STEEL & ROLL FORMING



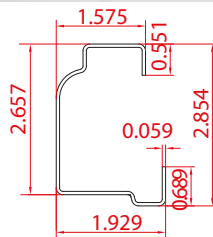
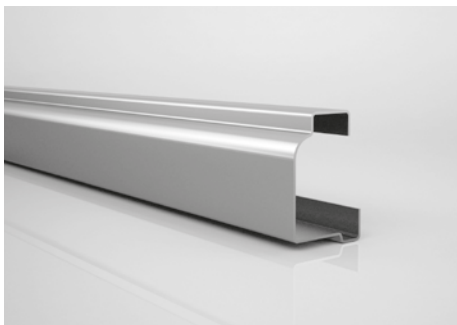
AUTOMOTIVE PROFILES

- Door window frames & window rails
- Glass running rail profile of doors
- Chassis profiles, chassis parts of trucks
- Front & rear bumper of cars
- Air filter cabins
- Sliding door rails
- Seat rails and frames
- Rain gutter
- Alusi exhaust pipe

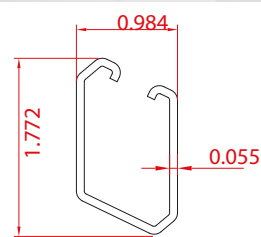
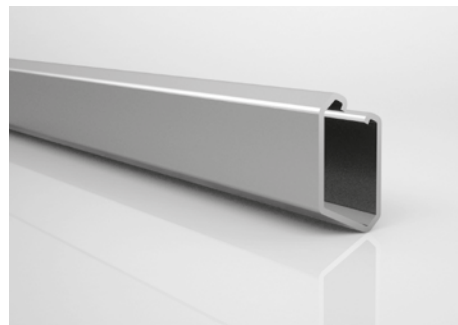
The design and production of our molds and fixtures that are used in every stage of the production are produced by our own experienced technical team. On special profiles punching, bending, edge reducing, edging, end cutting and similar requested applications can be performed to have them as semi and finished product.



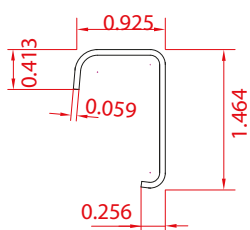
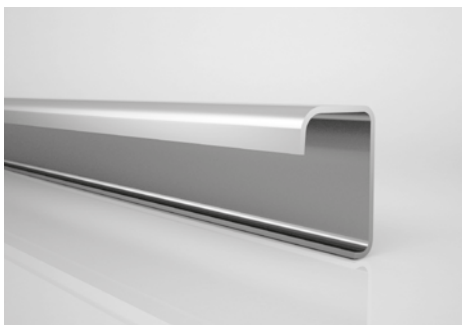
OTM-01



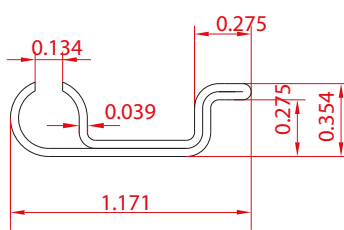
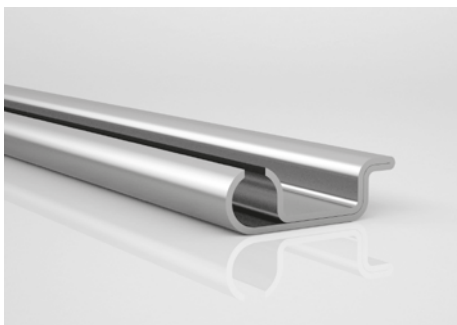
OTM-02



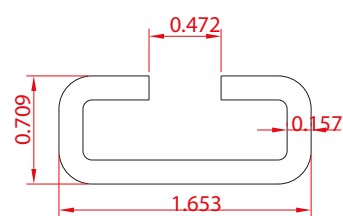
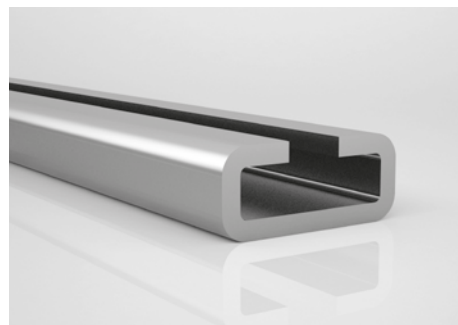
OTM-03



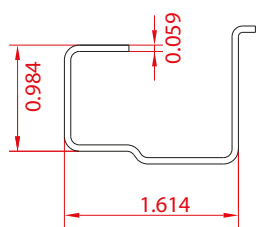
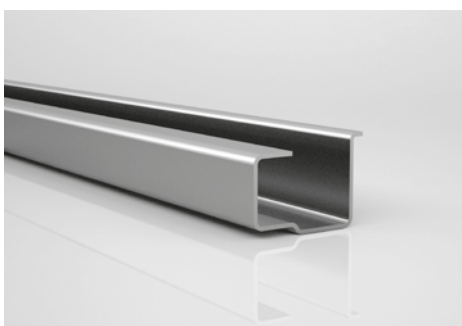
OTM-04



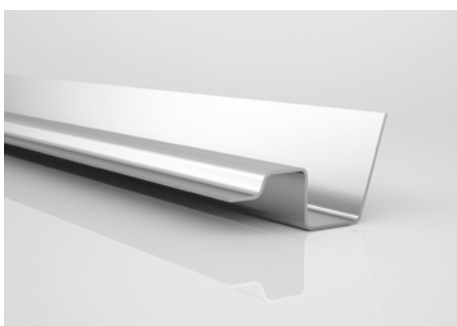
OTM-05



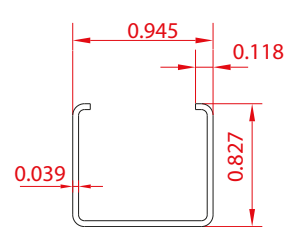
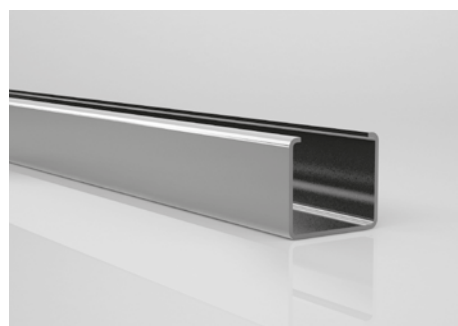
OTM-06



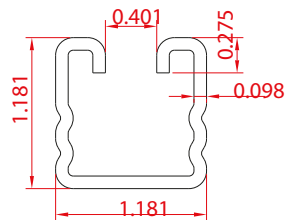
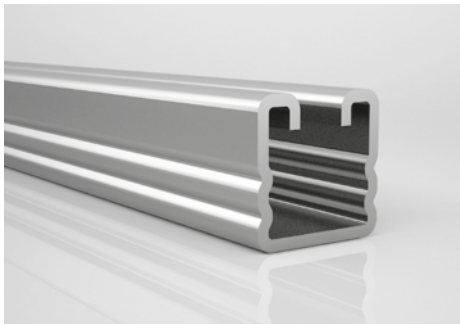
OTM-07



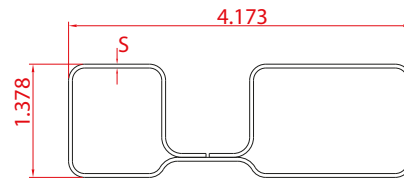
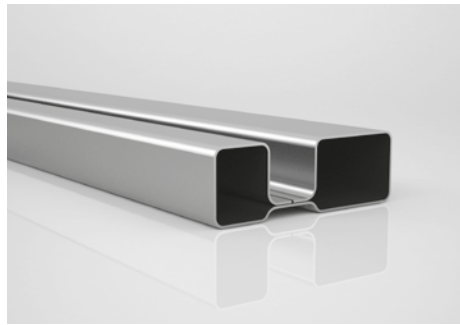
OTM-08



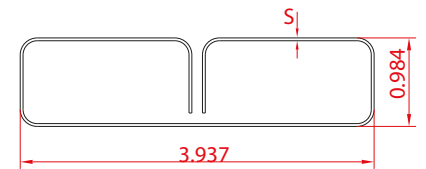
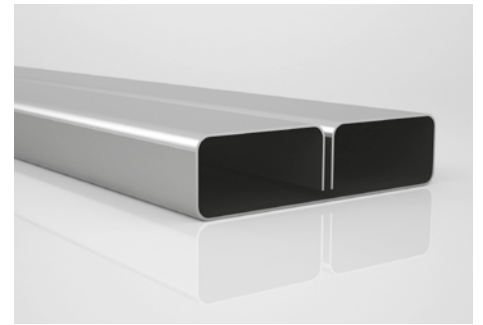
OTM-09



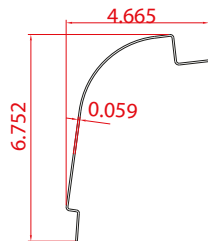
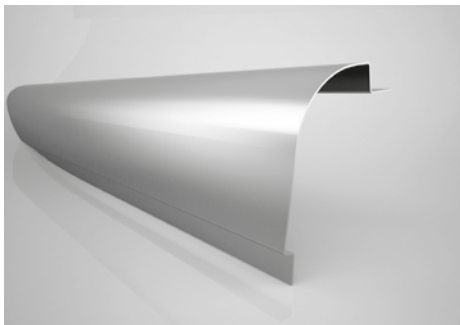
OTM-10



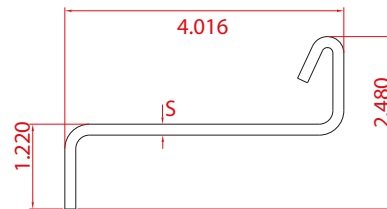
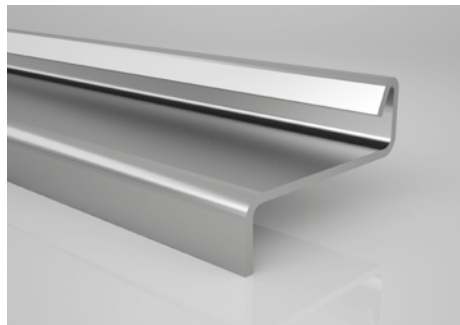
OTM-11



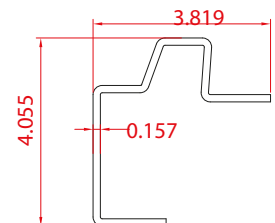
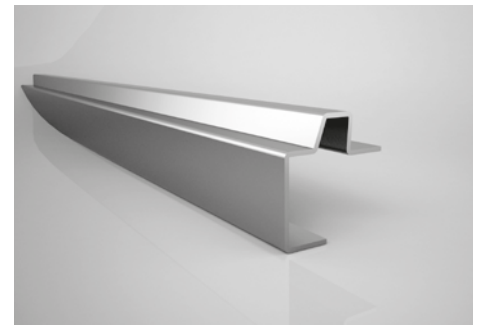
OTM-12



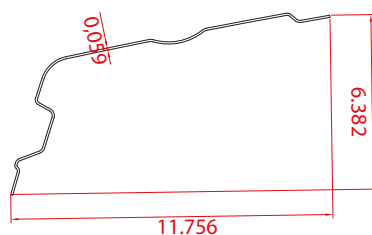
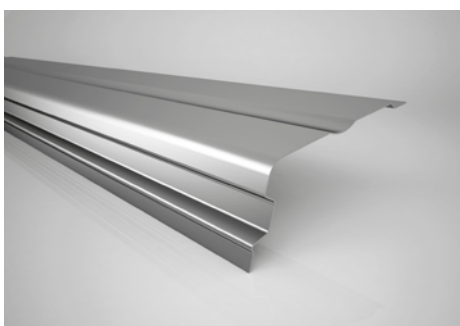
OTM-13



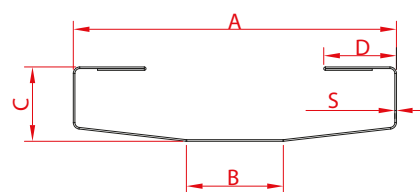
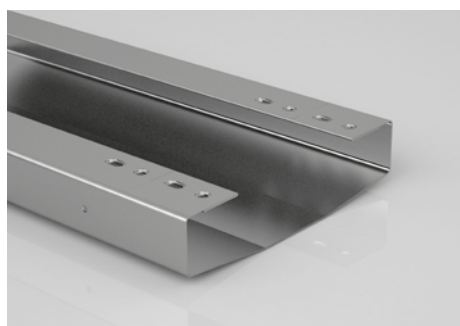
OTM-14



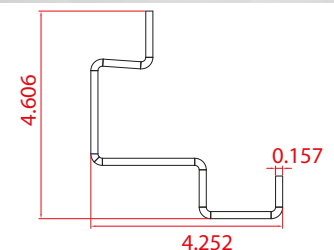
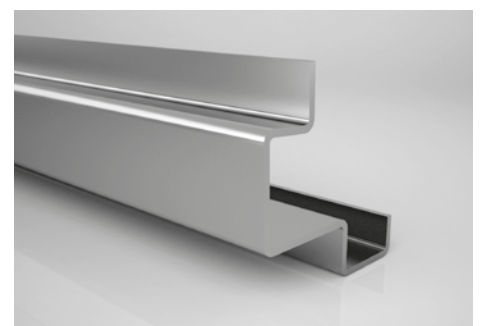
OTM-15



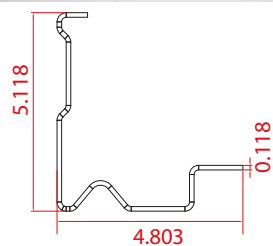
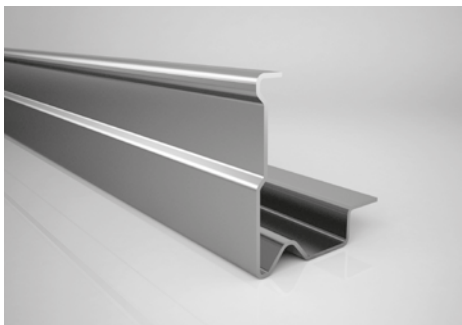
OTM-16



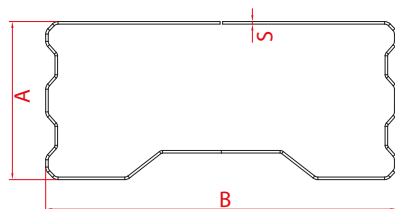
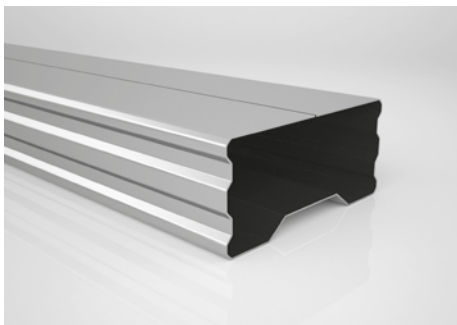
OTM-17



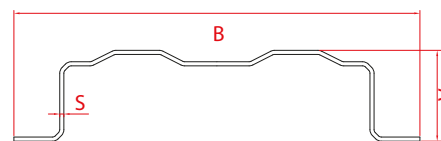
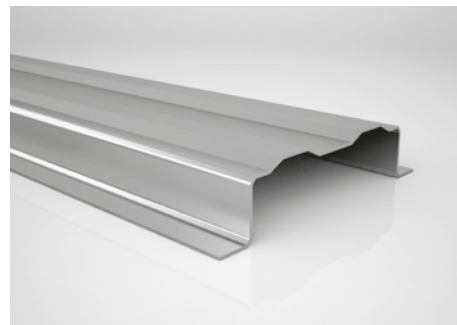
OTM-18



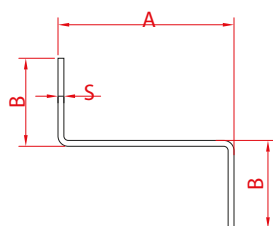
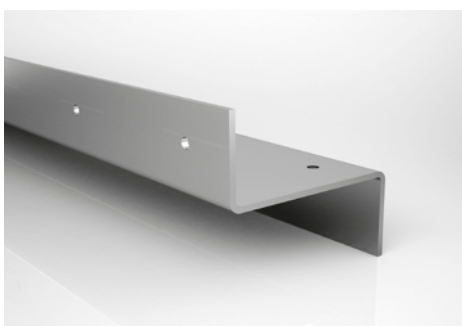
OTM-19



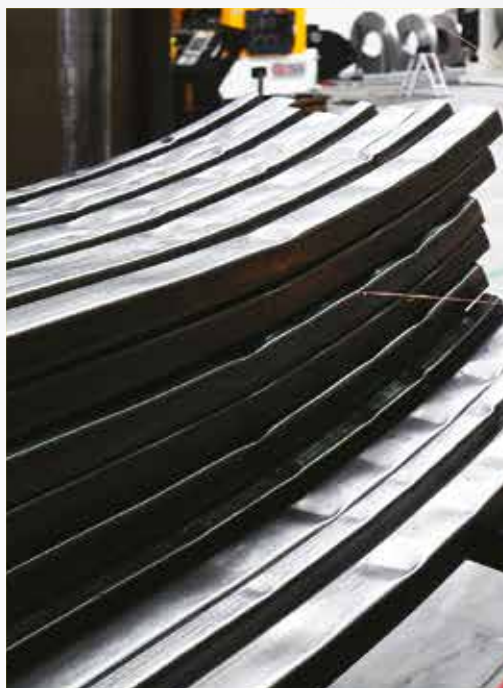
OTM-20



OTM-21

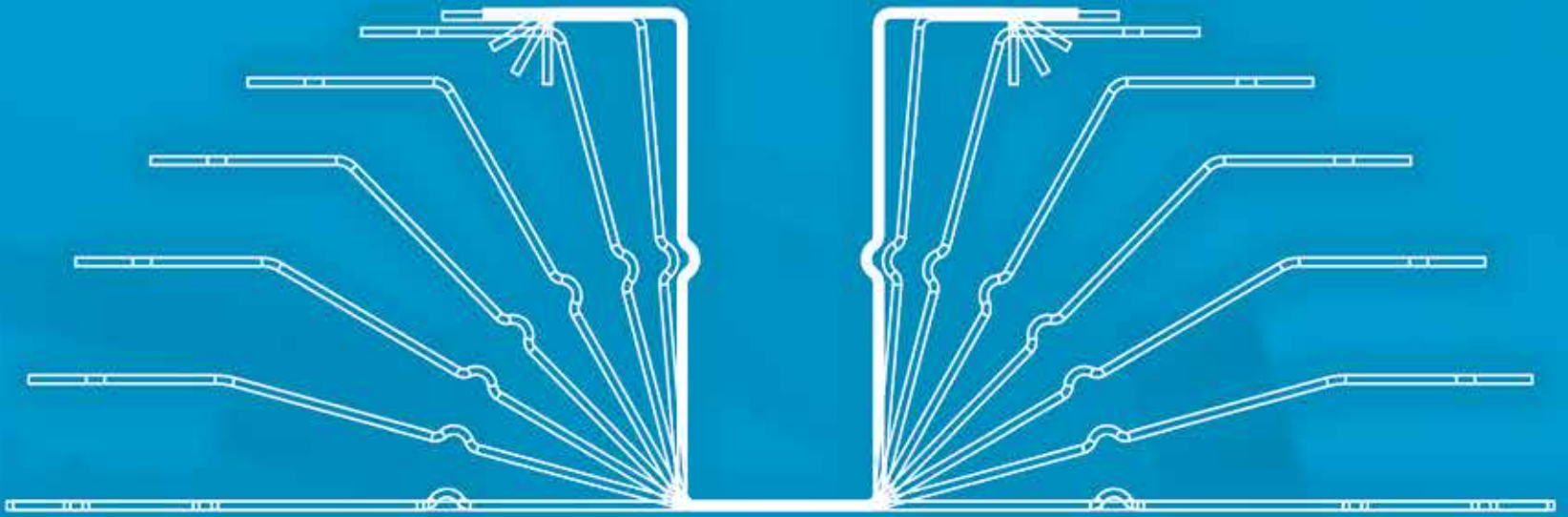


OTM-22





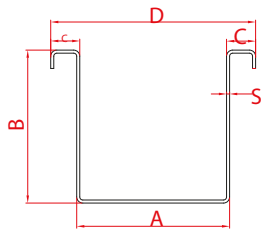
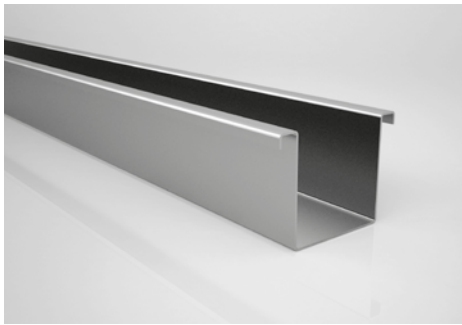
KMC
STEEL & ROLL FORMING



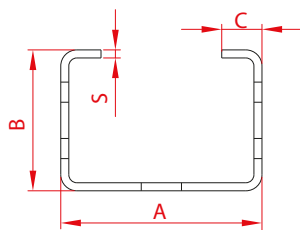
SOLAR ENERGY SYSTEMS PROFILES

- Standard & special open profiles,
- Standard & special seam welded profiles,
- Solar construction profiles with special section & holes.
- Omega profiles

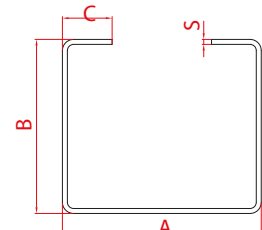
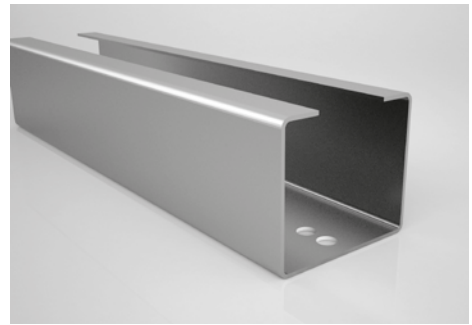
The design and production of our molds and fixtures that are used in every stage of the production are produced by our own experienced technical team. On special profiles punching, bending, edge reducing, edging, end cutting and similar requested applications can be performed to have them as semi and finished product.



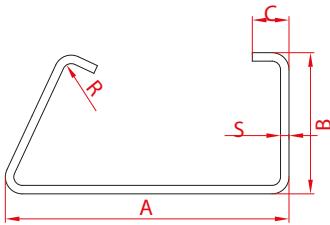
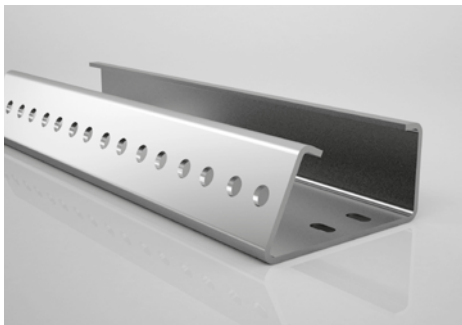
SLR-01



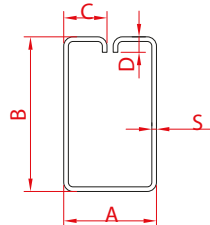
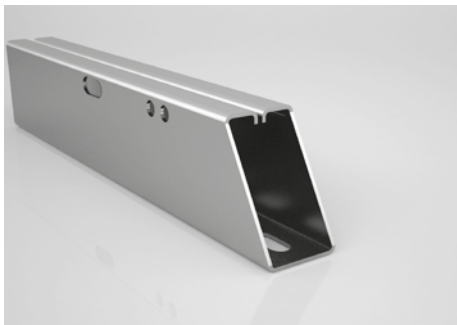
SLR-02



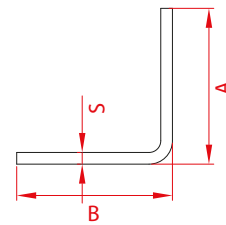
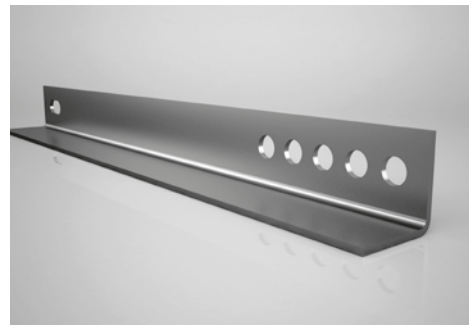
SLR-03



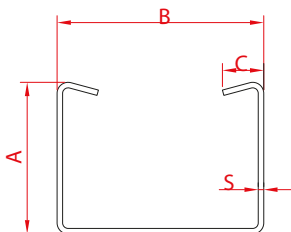
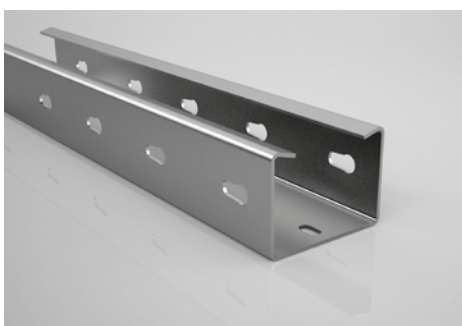
SLR-04



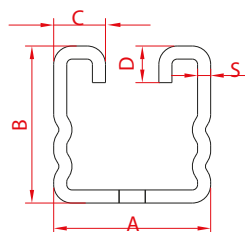
SLR-05



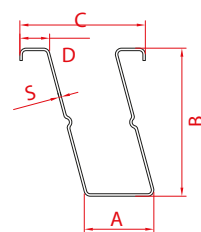
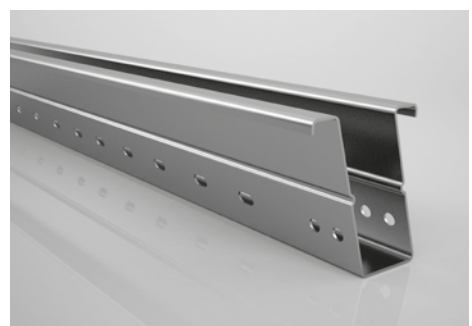
SLR-06



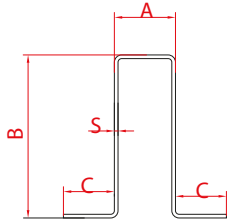
SLR-07



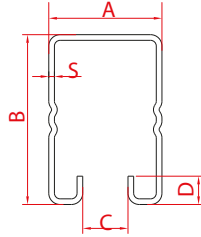
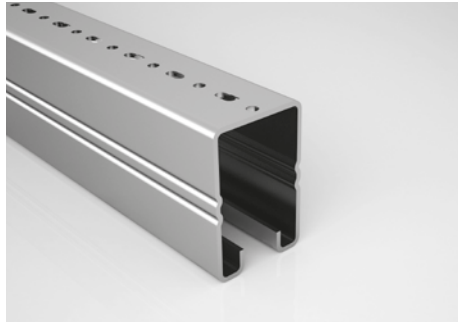
SLR-08



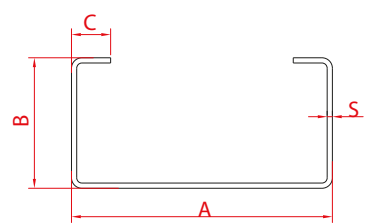
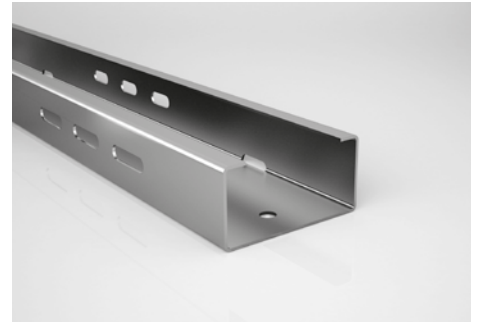
SLR-09



SLR-10



SLR-11

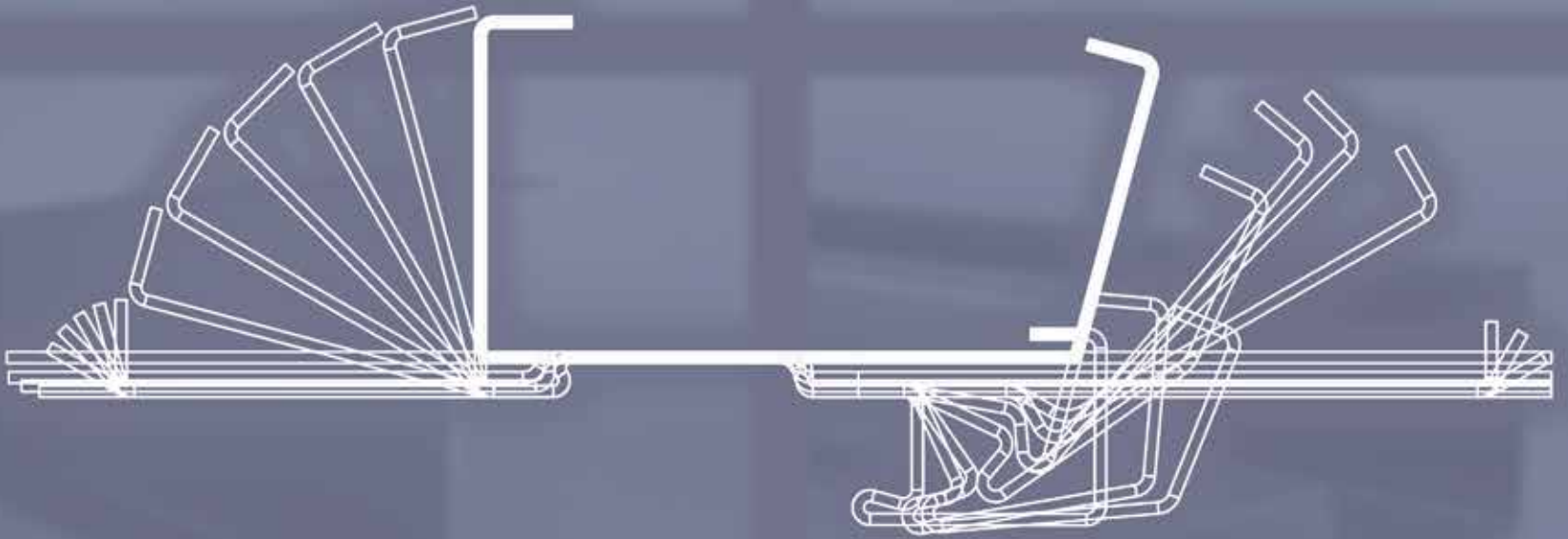


SLR-12





KMC
STEEL & ROLL FORMING

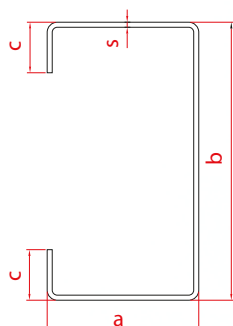
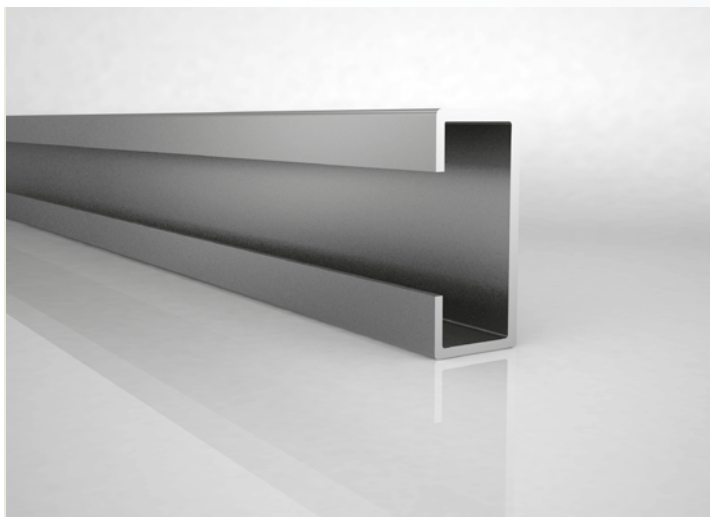


CIVIL WORKS & STEEL CONSTRUCTIONS

- C, Z & SIGMA profiles
- Standard industrial tubes & profiles
- Crane & cornice profiles
- Scaffolding special profiles
- Window & door sub-frame profiles
- PVC joinery support profiles
- Gypsum board wall & suspended ceiling profiles
- Special profiles for steel construction
- Fire door frame
- Door frame

The design and production of our molds and fixtures that are used in every stage of the production are produced by our own experienced technical team. On special profiles punching, bending, edge reducing, edging, end cutting and similar requested applications can be performed to have them as semi and finished product.

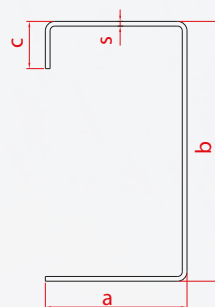
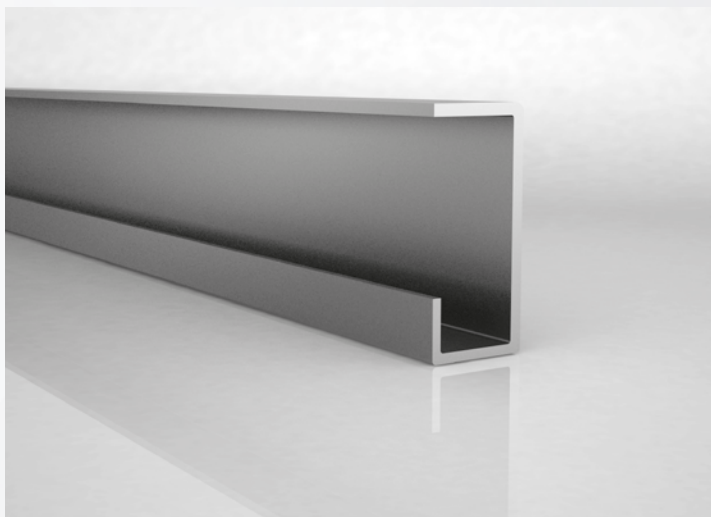
C PROFILES



Dimensions	A (in)	B (in)	C (in)	S (in)
Min.	0.197	0.394	0.394	0.020
Max.	9.646	19.685	5.906	0.315

All types of C profiles which their minimum and maximum measures are mentioned above are manufactured by our company.

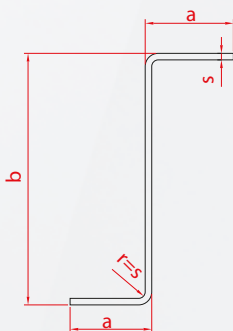
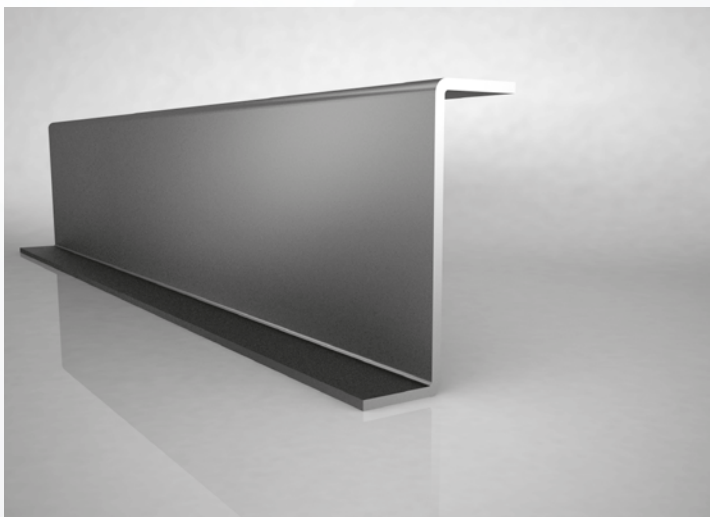
C PROFILES



Dimensions	A (in)	B (in)	C (in)	S (in)
Min.	0.197	0.394	0.394	0.020
Max.	9.646	19.685	5.906	0.315

All types of C profiles which their minimum and maximum measures are mentioned above are manufactured by our company.

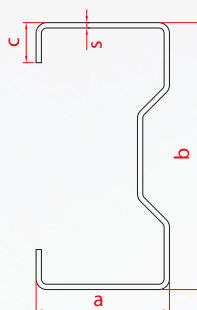
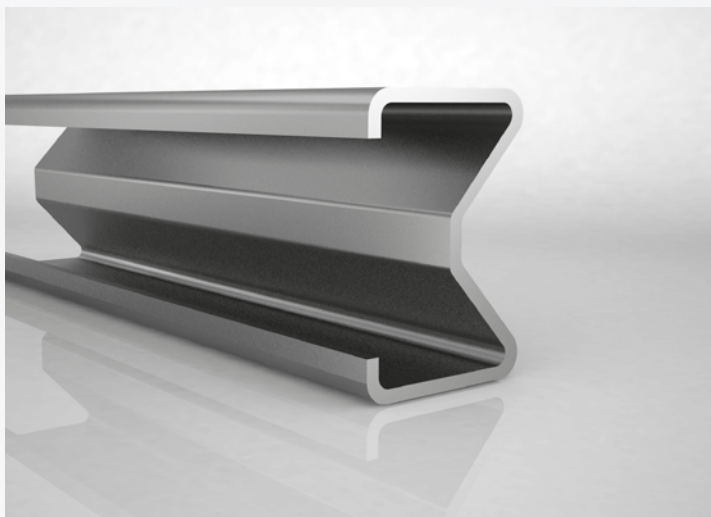
Z PROFILES



Dimensions	A (in)	B (in)	S (in)
Min.	0.197	0.394	0.020
Max.	4.724	19.685	0.315

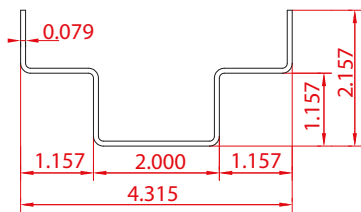
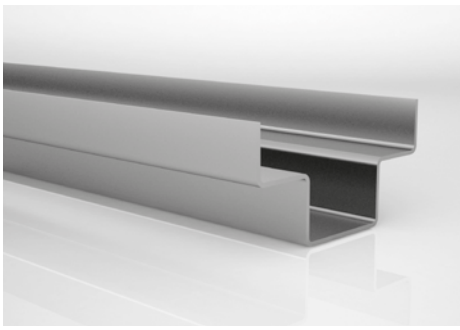
All types of Z profiles which their minimum and maximum measures are mentioned above are manufactured by our company.

SIGMA PROFILES

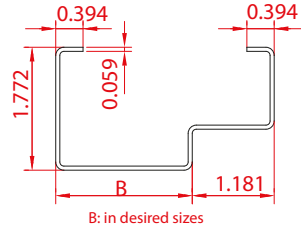
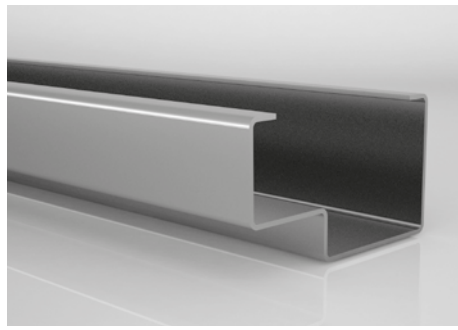


Dimensions	A (in)	B (in)	C (in)	S (in)
Min.	1.181	1.575	0.394	0,020
Max.	5.905	19.685	3.937	0,315

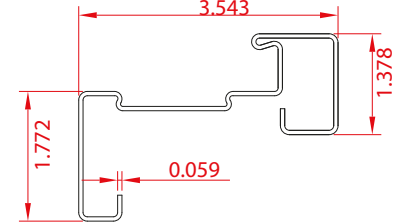
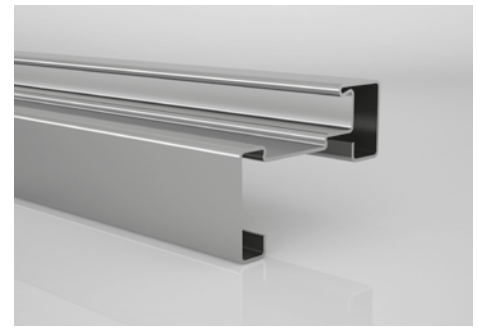
All types of Sigma profiles which their minimum and maximum measures are mentioned above are manufactured by our company.



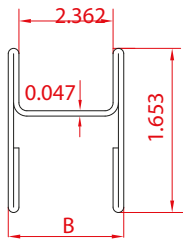
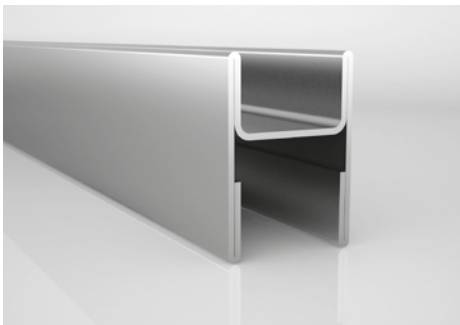
INS-01



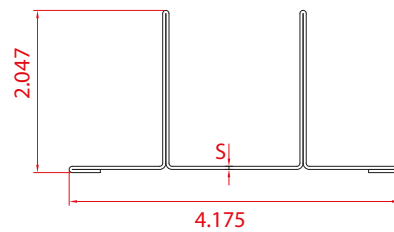
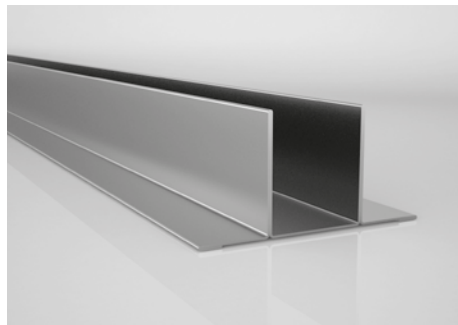
INS-02



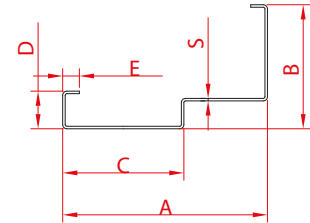
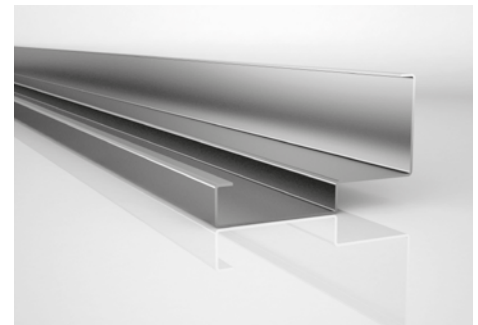
INS-03



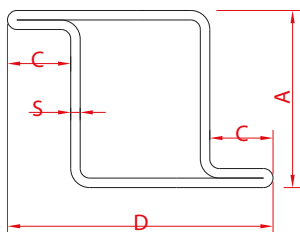
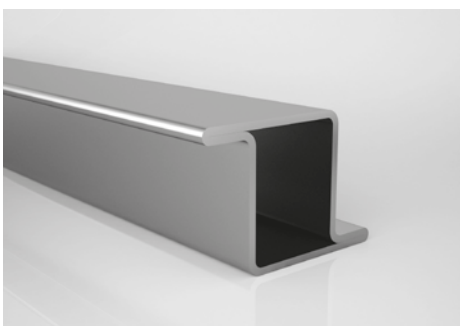
INS-04



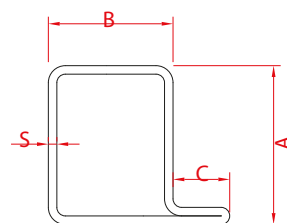
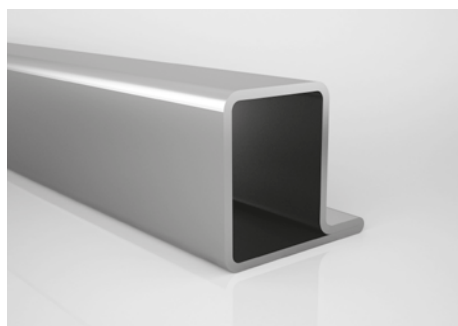
INS-05



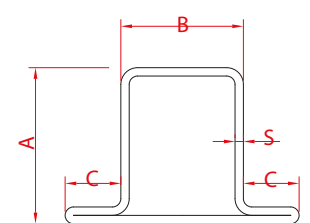
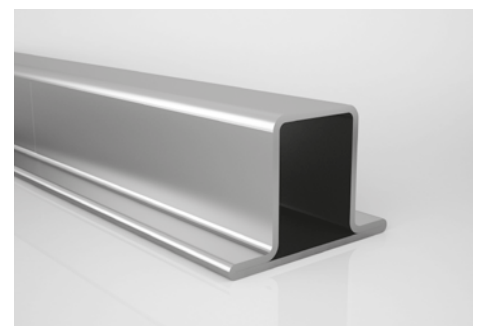
INS-06



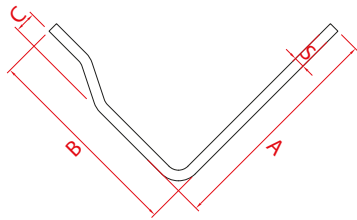
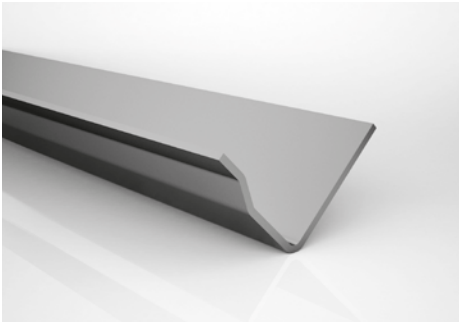
INS-07



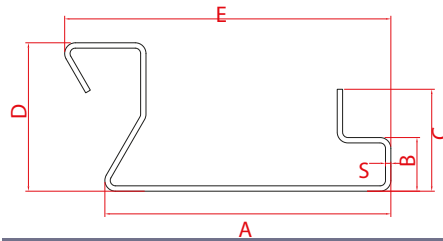
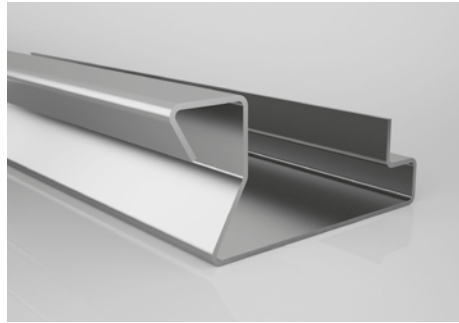
INS-08



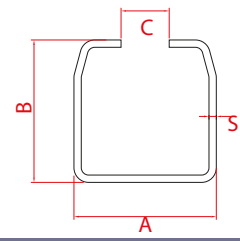
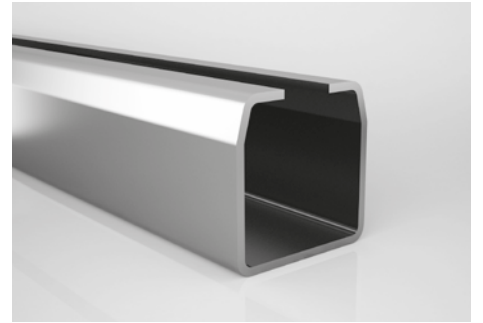
INS-09



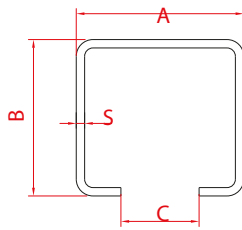
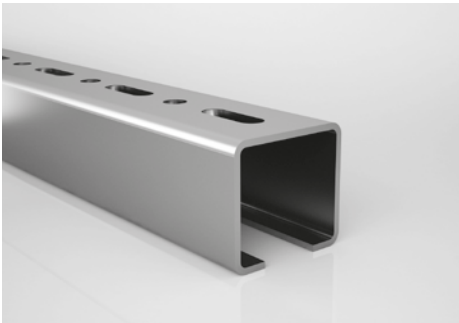
INS-10



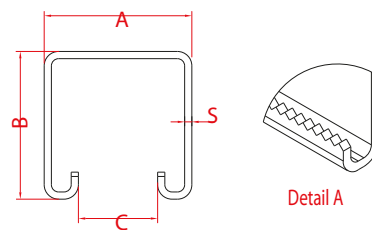
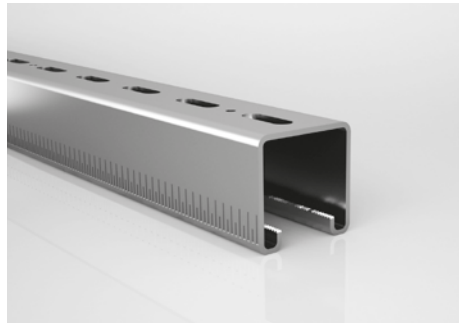
INS-11



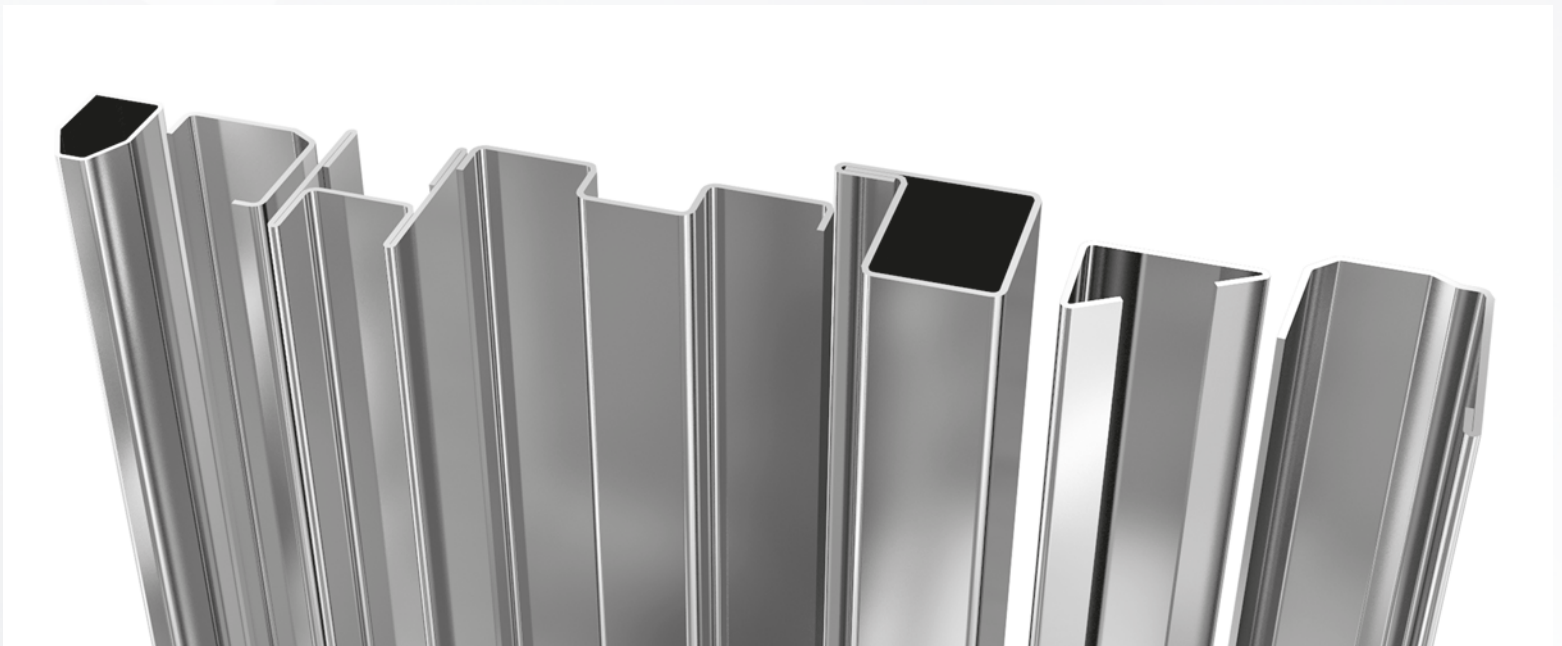
INS-12



INS-13

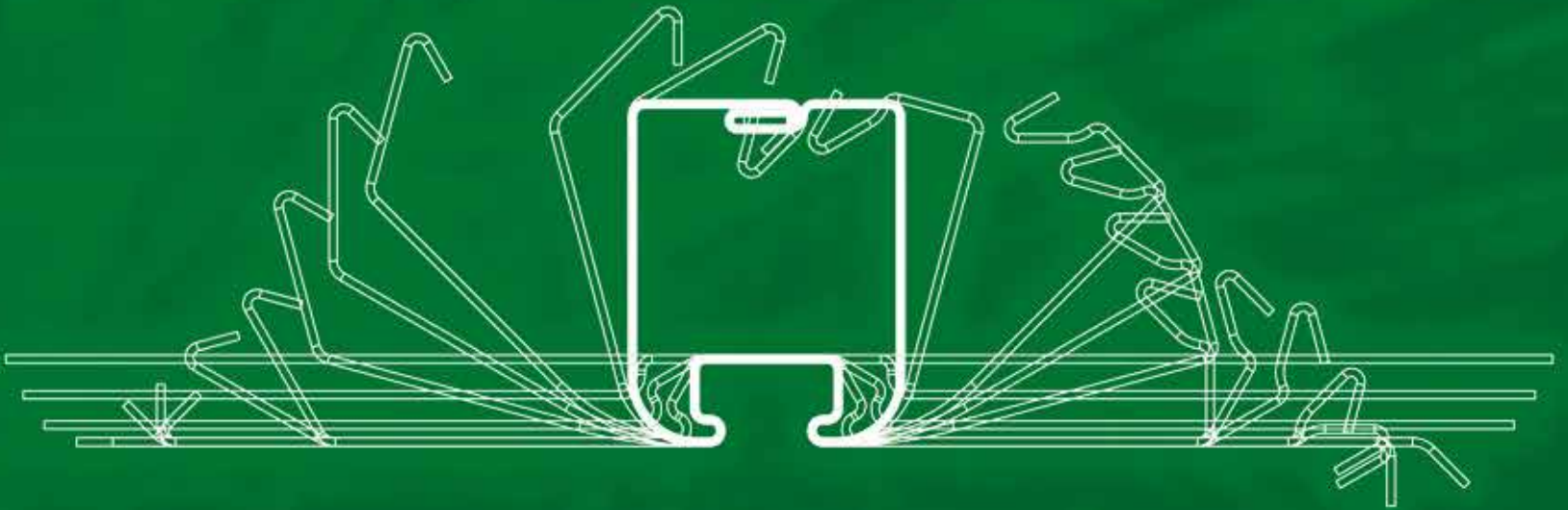


INS-14





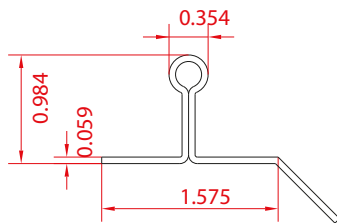
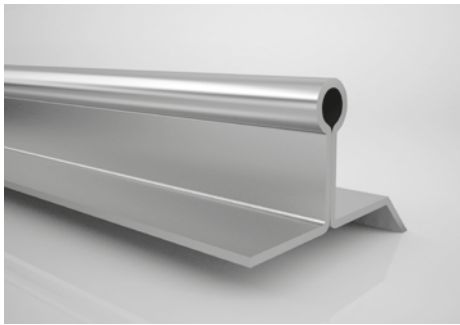
KMC
STEEL & ROLL FORMING



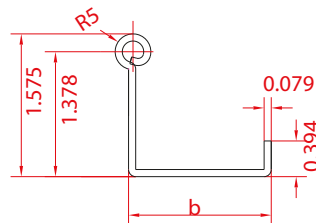
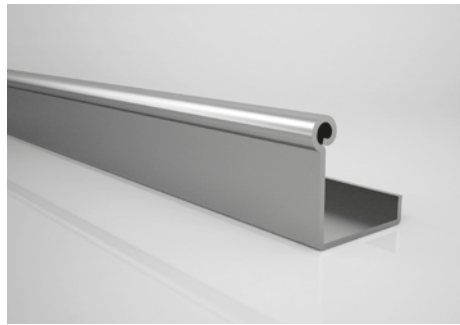
PROFILES FOR AGRICULTURE AND GREENHOUSE

- Greenhouse profiles & parts •
- Greenhouse U, L & I clips •
- Connection parts •
- Tubes and profiles in special cross-section •
- Gutter range in different shapes & sizes •

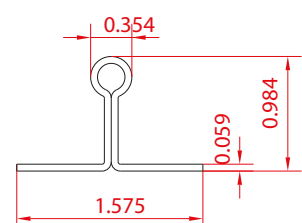
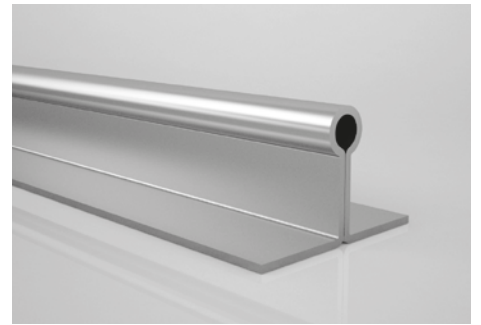
The design and production of our molds and fixtures that are used in every stage of the production are produced by our own experienced technical team. On special profiles punching, bending, edge reducing, edging, end cutting and similar requested applications can be performed to have them as semi and finished product.



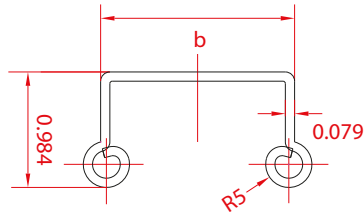
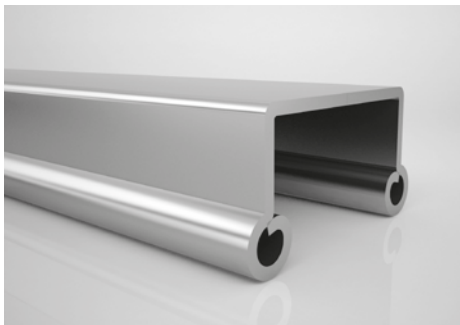
TRM-01



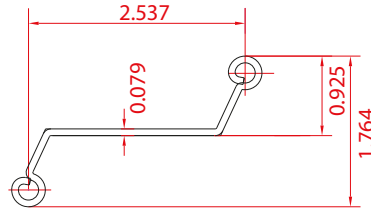
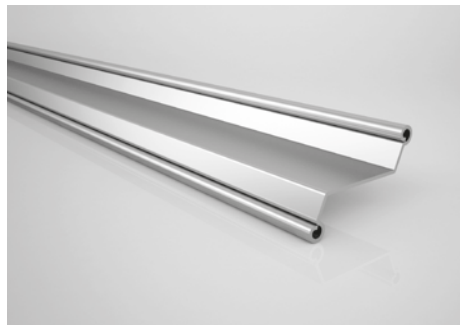
TRM-02



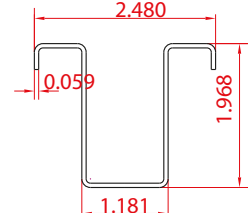
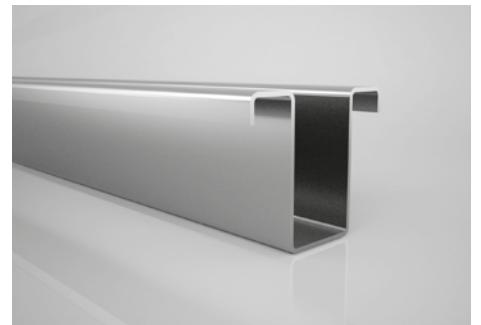
TRM-03



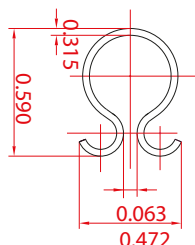
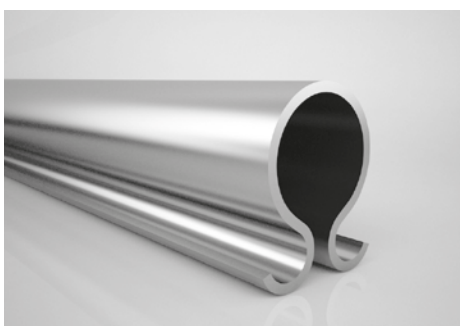
TRM-04



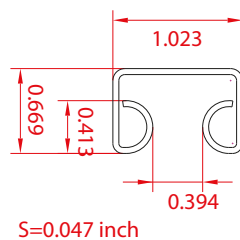
TRM-05



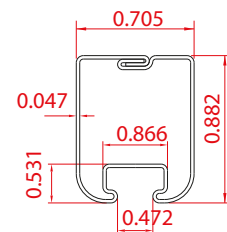
TRM-06



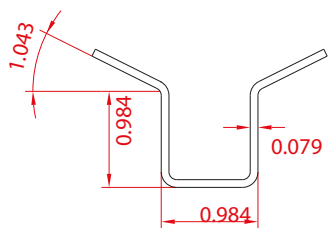
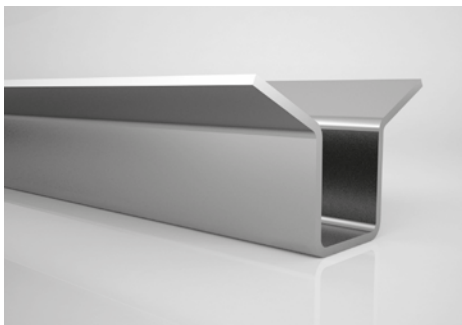
TRM-07



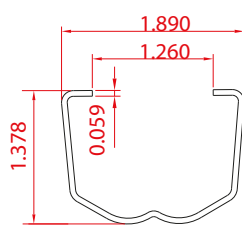
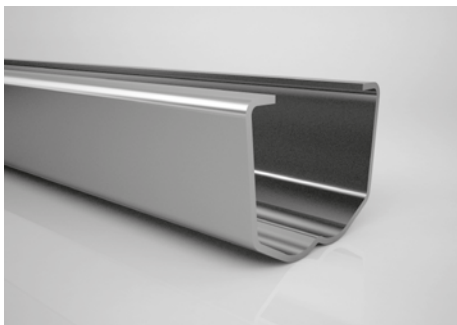
TRM-08



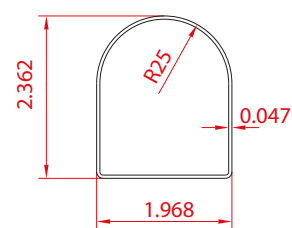
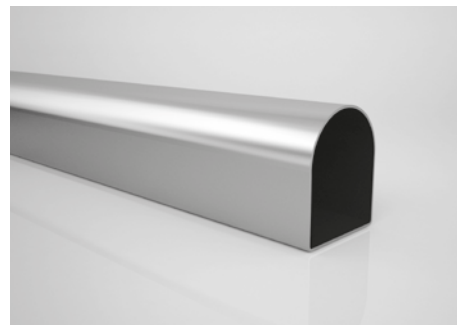
TRM-09



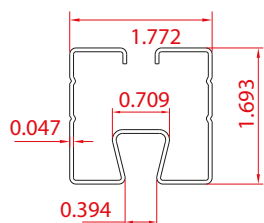
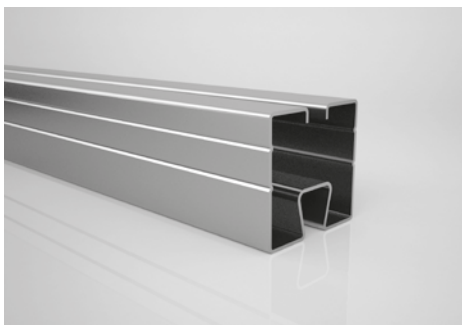
TRM-10



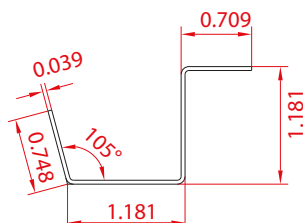
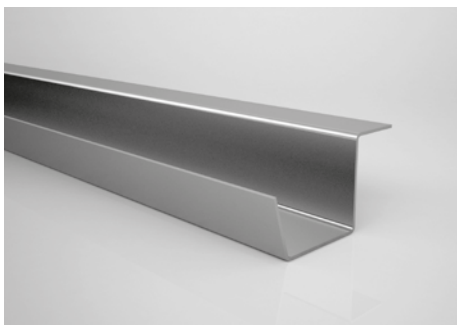
TRM-11



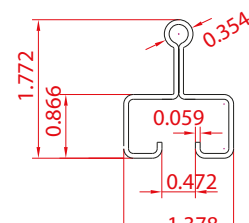
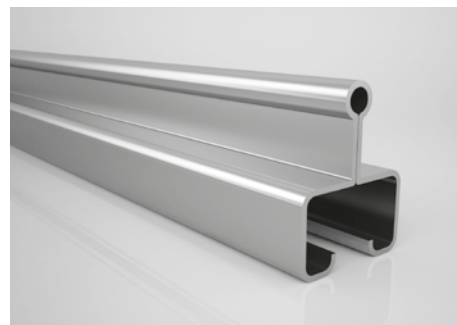
TRM-12



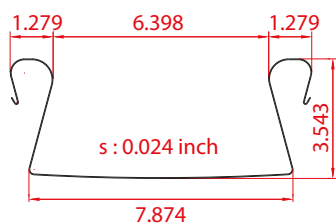
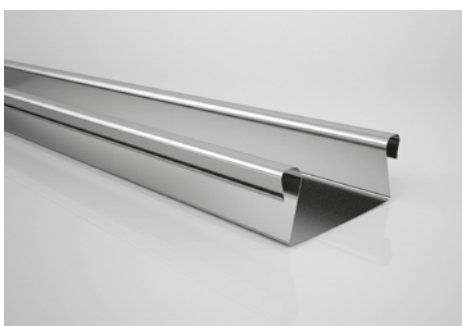
TRM-13



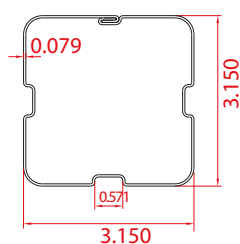
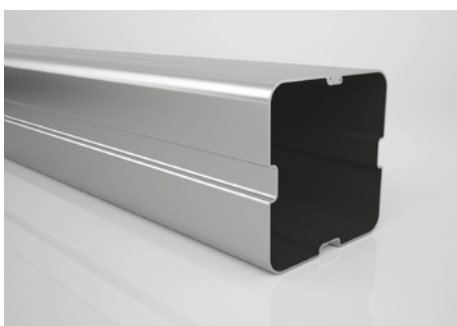
TRM-14



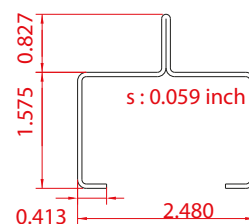
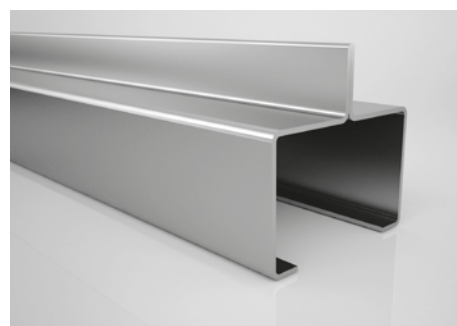
TRM-15



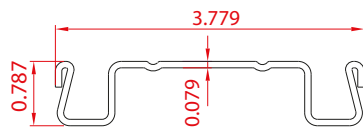
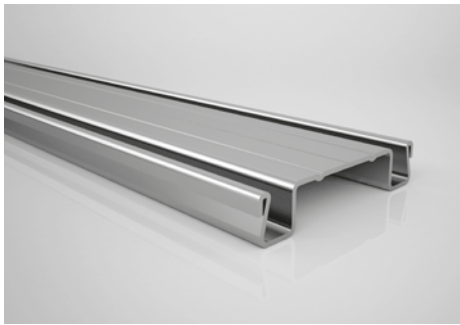
TRM-16



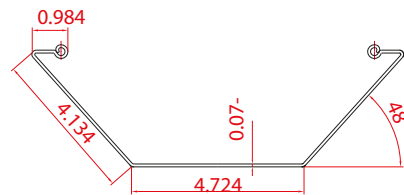
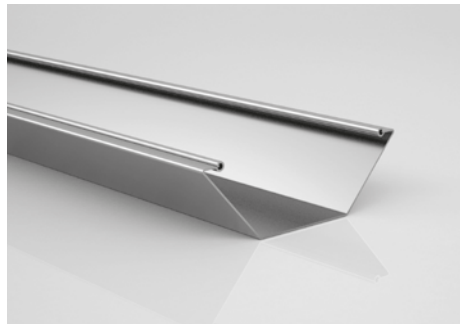
TRM-17



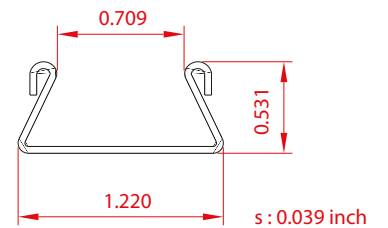
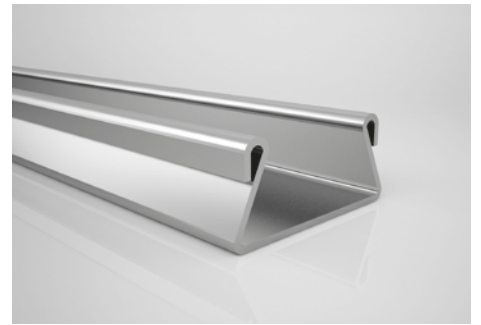
TRM-18



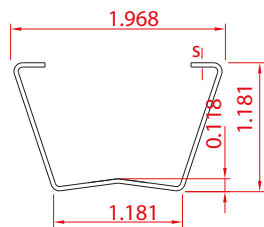
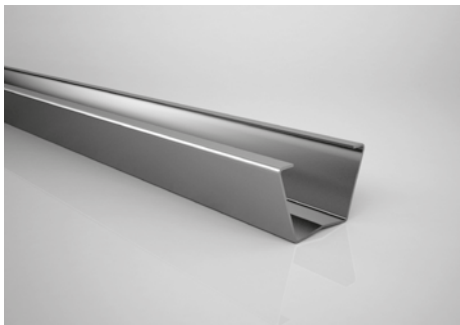
TRM-19



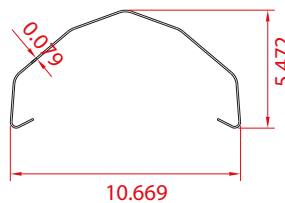
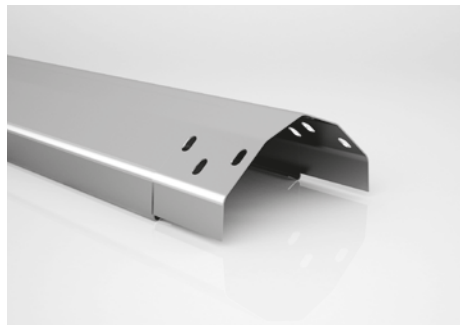
TRM-20



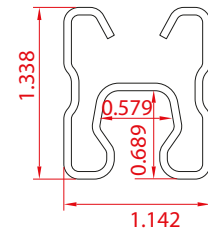
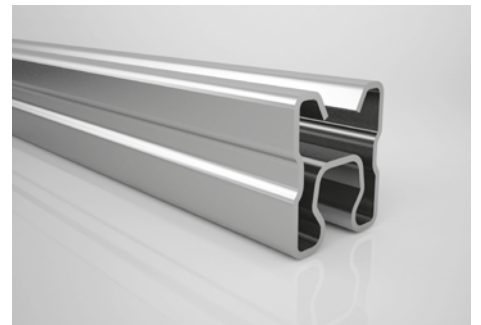
TRM-21



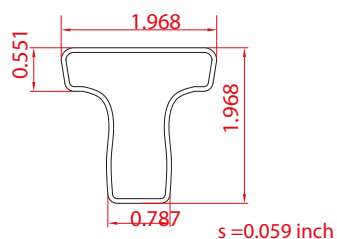
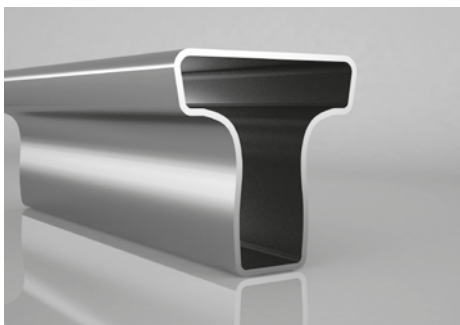
TRM-22



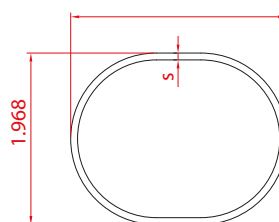
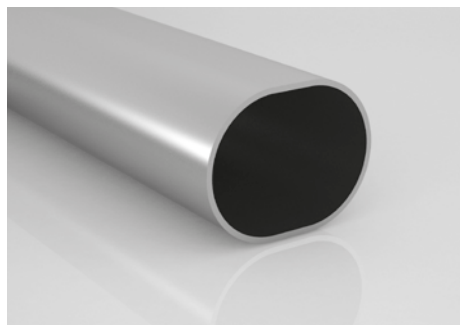
TRM-23



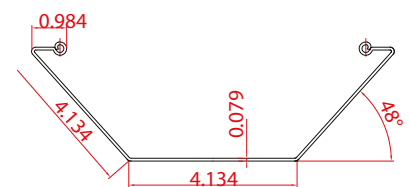
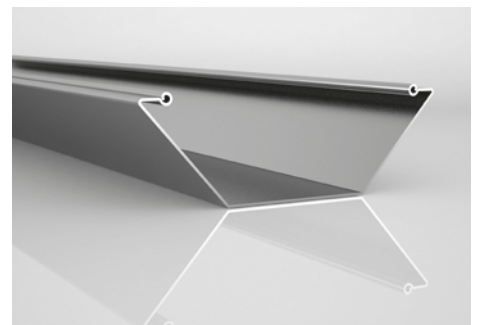
TRM-24



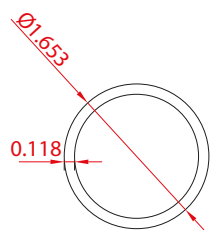
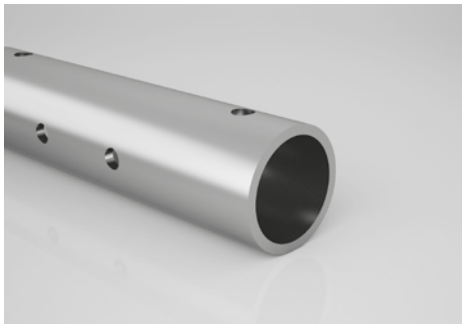
TRM-25



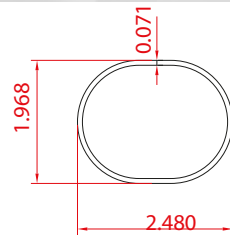
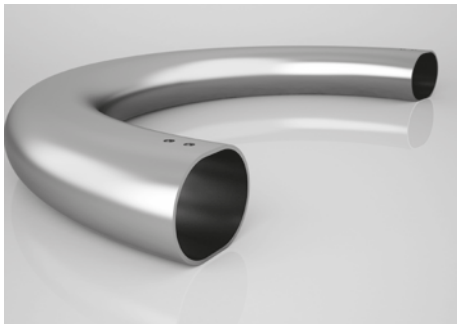
TRM-26



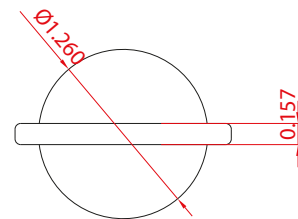
TRM-27



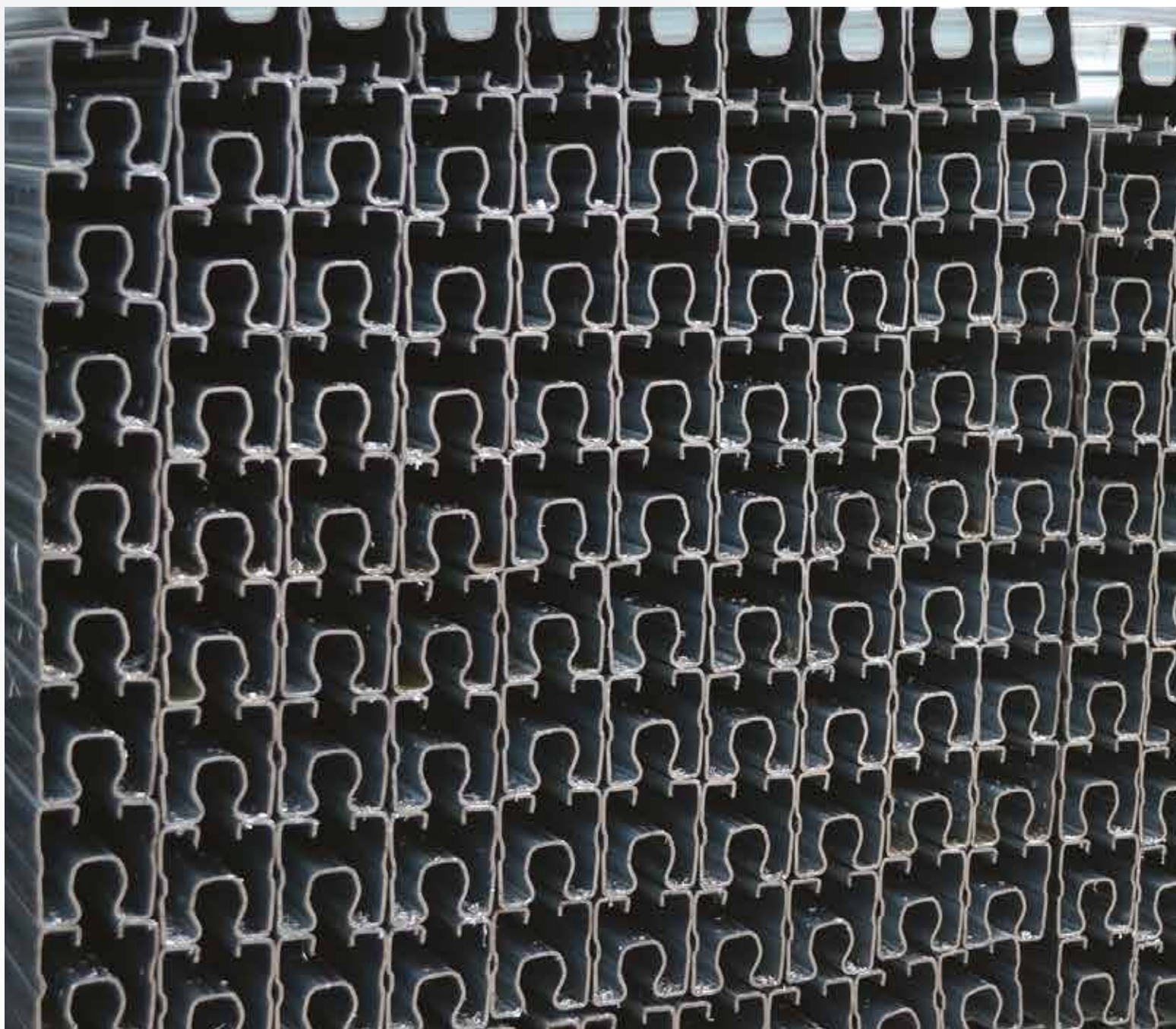
TRM-28



TRM-29



TRM-30





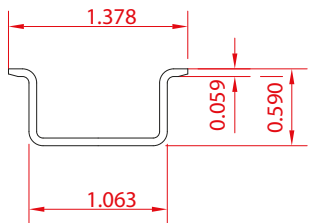
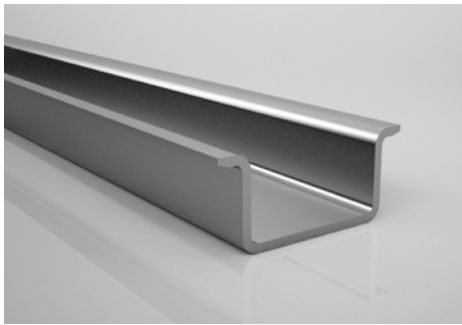
KMC
STEEL & ROLL FORMING



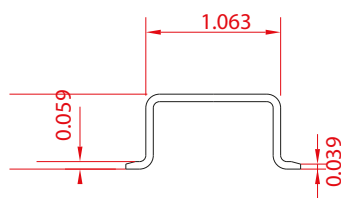
PROFILES FOR ELECTRIC & ELECTRONICS

- Connector mounting rails
- Cable carrying profiles
- Cable trays
- Profiles for domestic appliances
- Handle profiles
- Frame profiles
- Special profiles with inox material
- Oven burner pipes
- Electrical panel profiles
- Cable glands

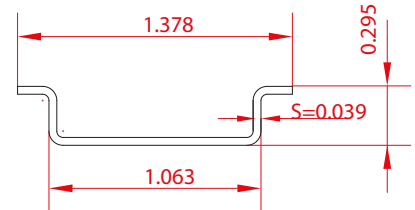
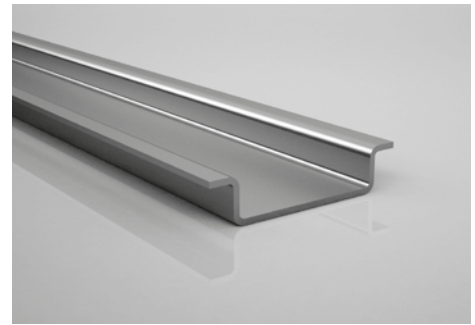
The design and production of our molds and fixtures that are used in every stage of the production are produced by our own experienced technical team. On special profiles punching, bending, edge reducing, edging, end cutting and similar requested applications can be performed to have them as semi and finished product.



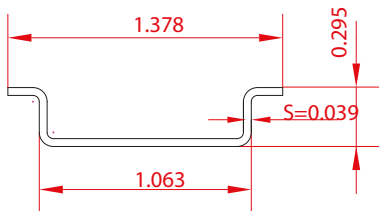
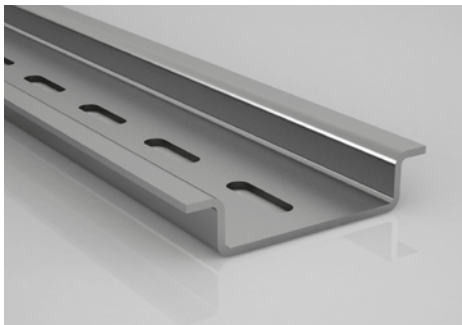
KLM-01



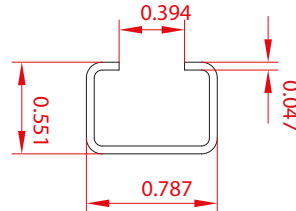
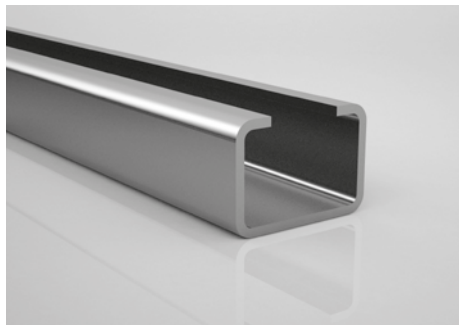
KLM-02



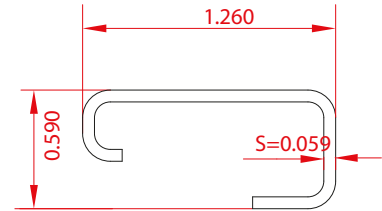
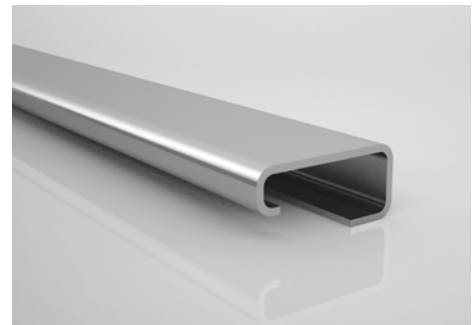
KLM-03



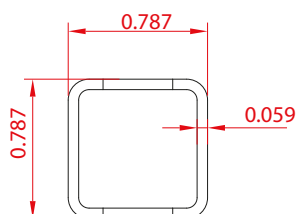
KLM-04



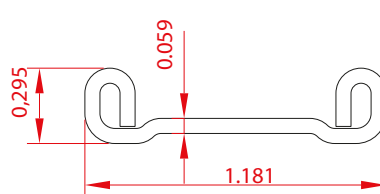
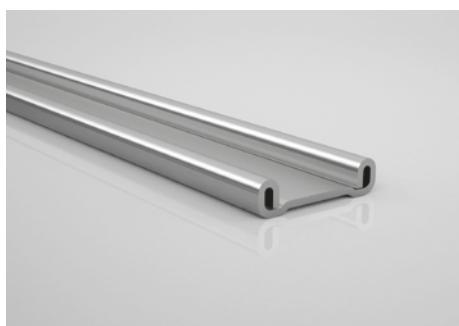
KLM-05



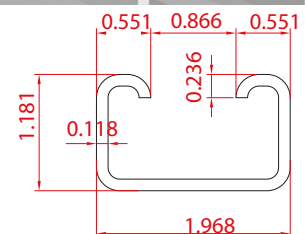
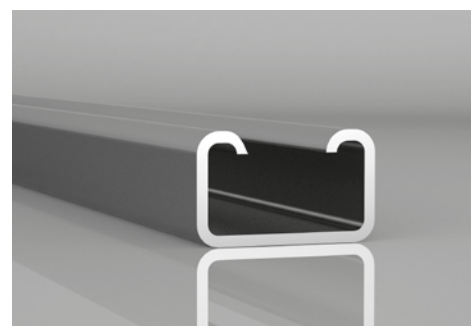
KLM-06



KLM-07



KLM-08



KLM-09

Our Quality Policy

The main objective of KMC Group is to be prestigious and trustworthy organization on the manufacturing of special profiles in both domestic & international market. In this meaning, our quality policy is to produce our products, which meet our customers' expectations, in reliable conditions, in good quality and on time in order to maintain the customer satisfaction.

Our quality system is certified according to the standards of ISO/TS 16949 and ISO9001.





KMC
STEEL & ROLL FORMING

THE PROFILE OF THE WORLD

www.kmcrollforming.com



KMC STEEL & ROLL FORMING

11417 Irving Park Rd (IL-19), Franklin Park, IL-60131-3882
T: 630 426 36 70

info@kmcrollforming.com - sales@kmcrollforming.com

www.kmcrollforming.com