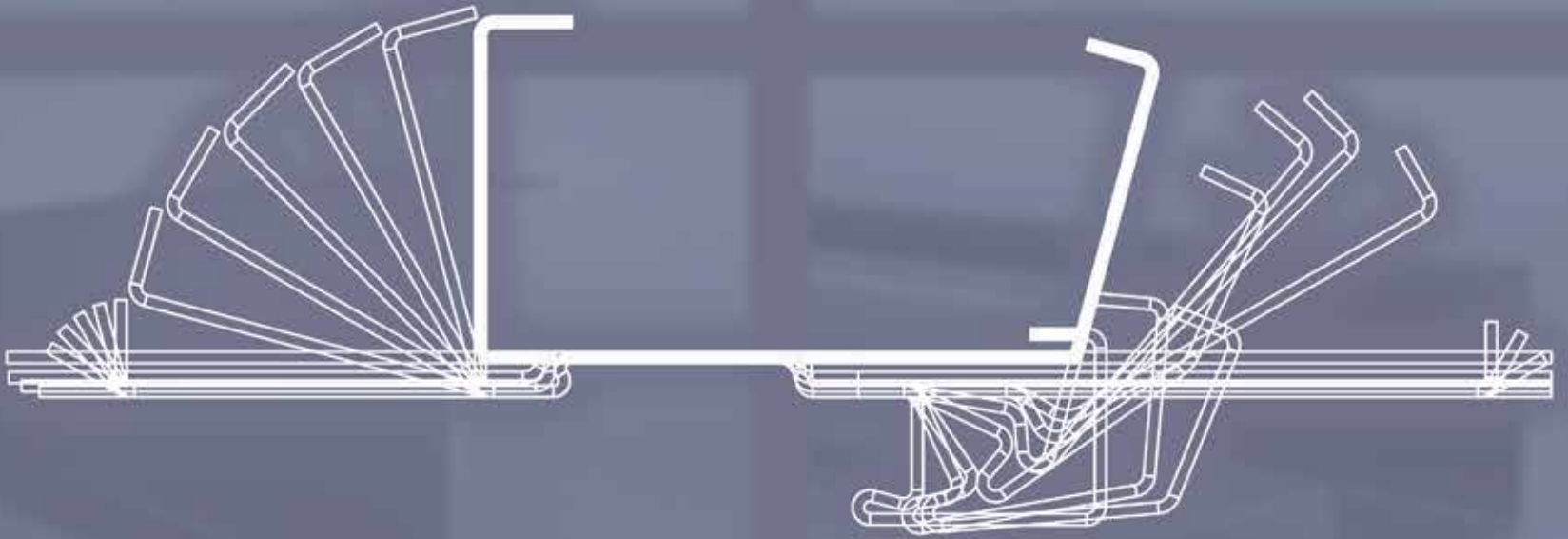




KMC
STEEL & ROLL FORMING

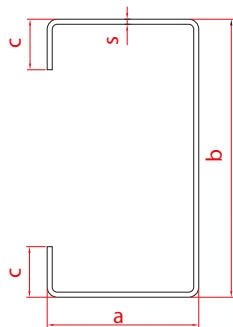
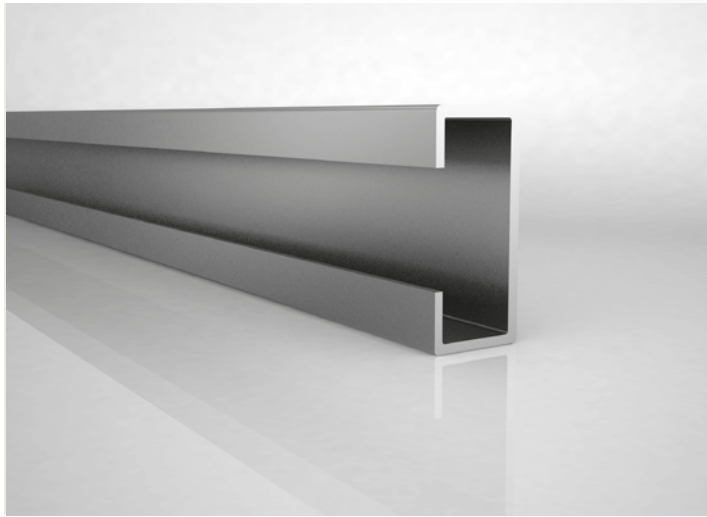


CIVIL WORKS & STEEL CONSTRUCTIONS

- C, Z & SIGMA profiles
- Standard industrial tubes & profiles
- Crane & cornice profiles
- Scaffolding special profiles
- Window & door sub-frame profiles
- PVC joinery support profiles
- Gypsum board wall & suspended ceiling profiles
- Special profiles for steel construction
- Fire door frame
- Door frame

The design and production of our molds and fixtures that are used in every stage of the production are produced by our own experienced technical team. On special profiles punching, bending, edge reducing, edging, end cutting and similar requested applications can be performed to have them as semi and finished product.

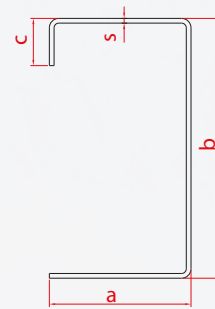
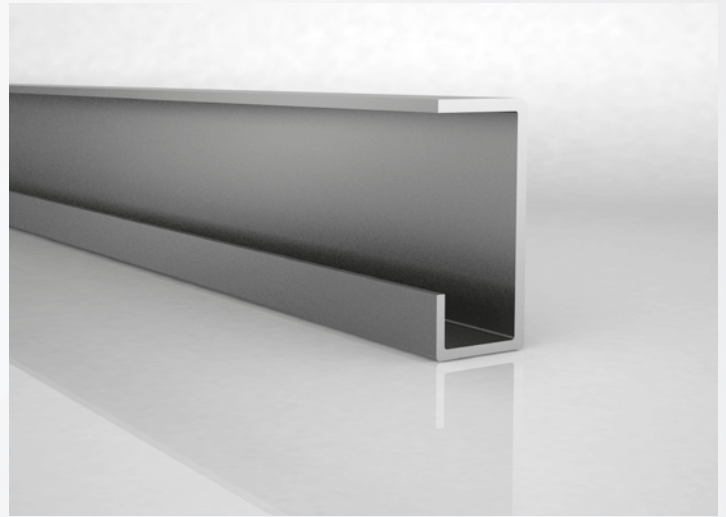
C PROFILES



Dimensions	A (in)	B (in)	C (in)	S (in)
Min.	0.197	0.394	0.394	0.020
Max.	9.646	19.685	5.906	0.315

All types of C profiles which their minimum and maximum measures are mentioned above are manufactured by our company.

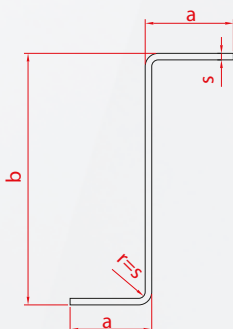
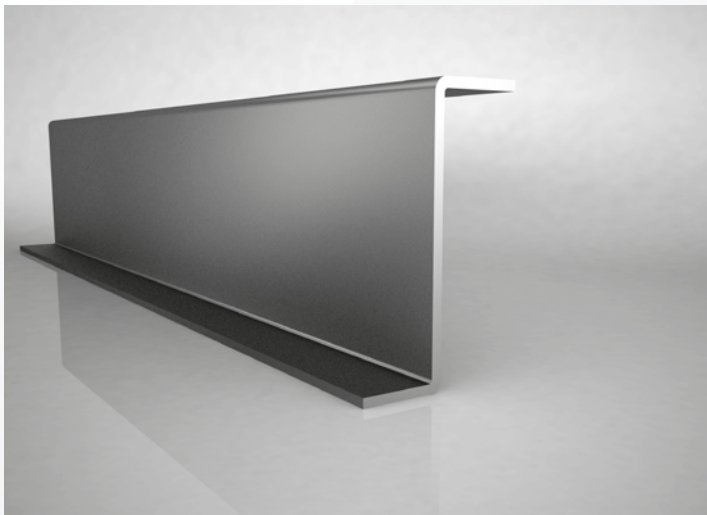
C PROFILES



Dimensions	A (in)	B (in)	C (in)	S (in)
Min.	0.197	0.394	0.394	0.020
Max.	9.646	19.685	5.906	0.315

All types of C profiles which their minimum and maximum measures are mentioned above are manufactured by our company.

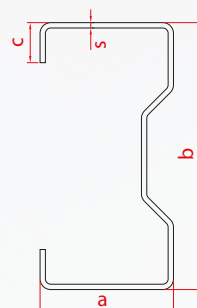
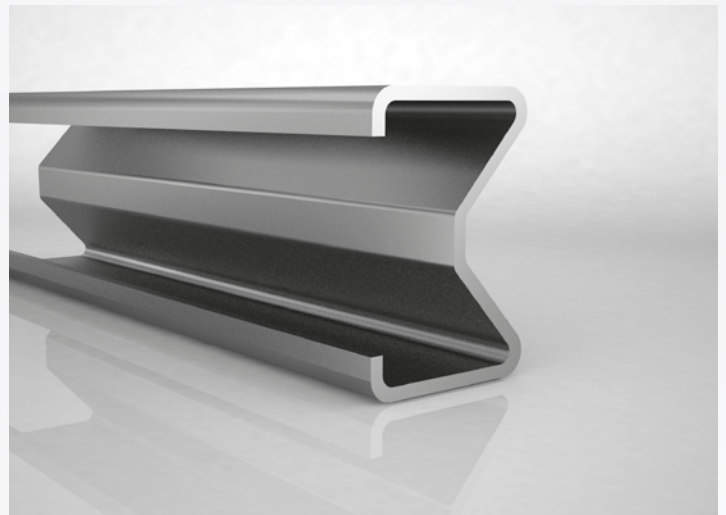
Z PROFILES



Dimensions	A (in)	B (in)	S (in)
Min.	0.197	0.394	0.020
Max.	4.724	19.685	0.315

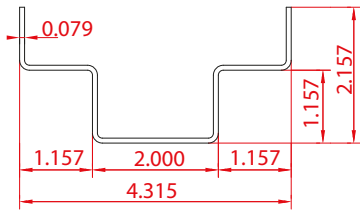
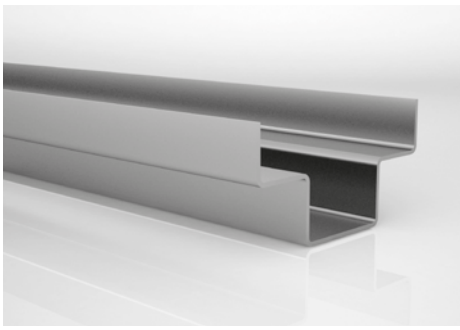
All types of Z profiles which their minimum and maximum measures are mentioned above are manufactured by our company.

SIGMA PROFILES

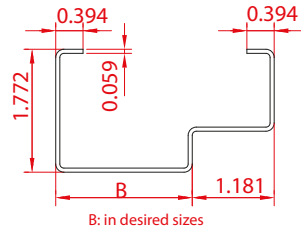
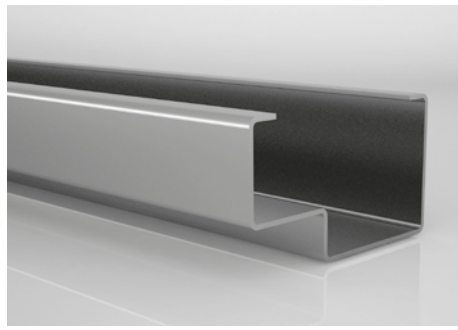


Dimensions	A (in)	B (in)	C (in)	S (in)
Min.	1.181	1.575	0.394	0,020
Max.	5.905	19.685	3.937	0,315

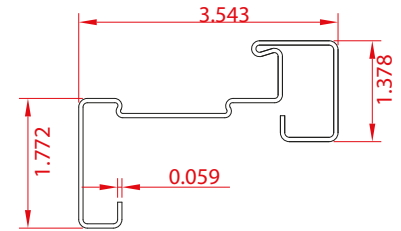
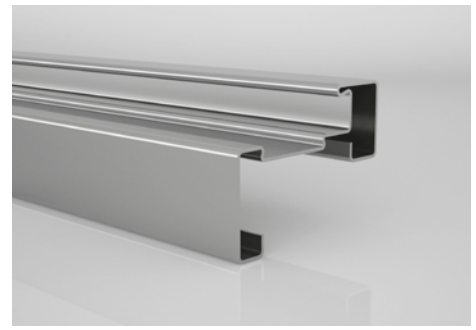
All types of Sigma profiles which their minimum and maximum measures are mentioned above are manufactured by our company.



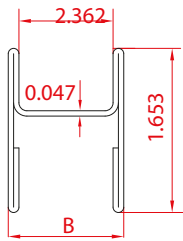
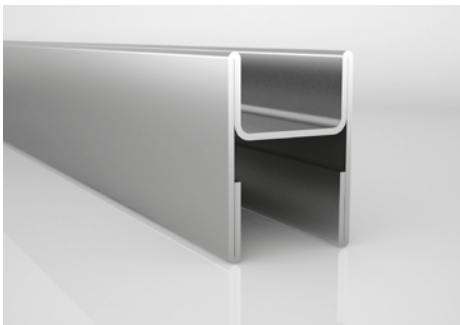
INS-01



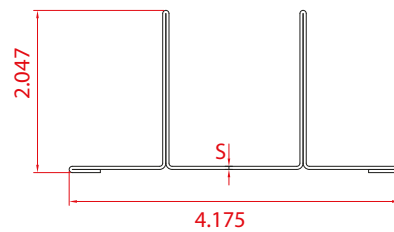
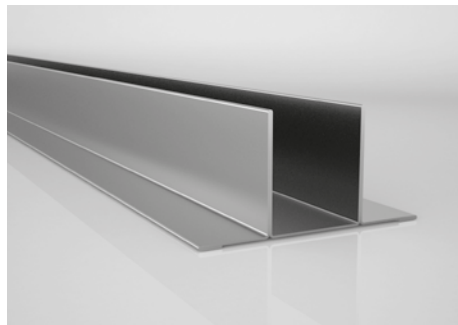
INS-02



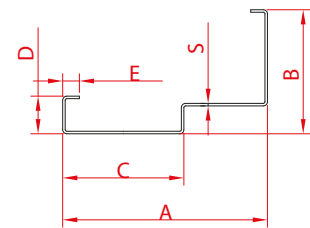
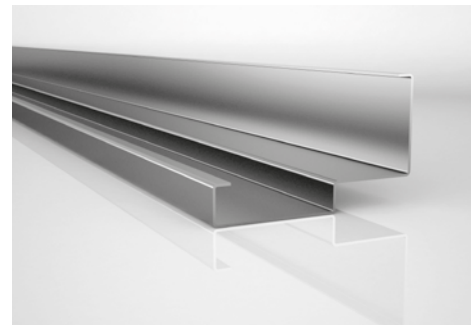
INS-03



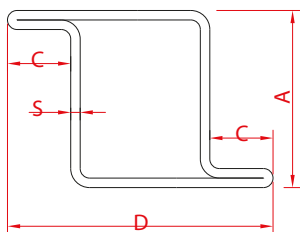
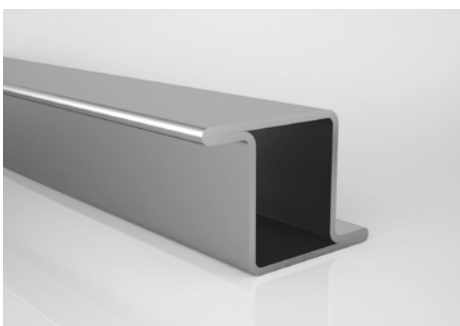
INS-04



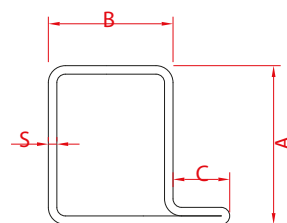
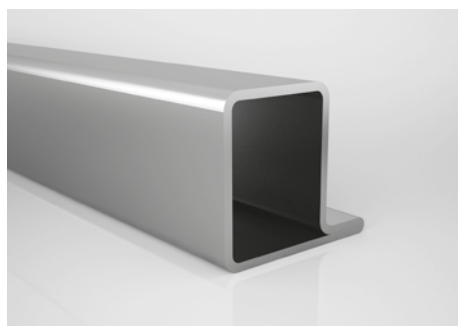
INS-05



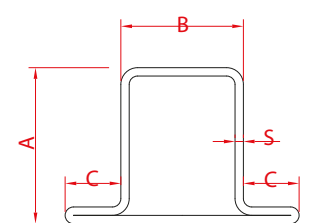
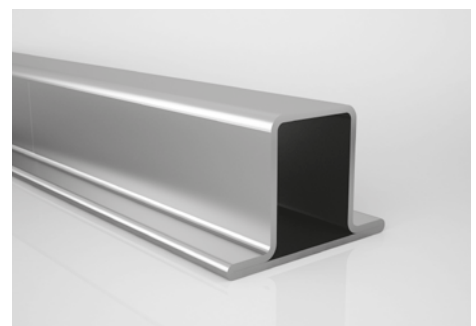
INS-06



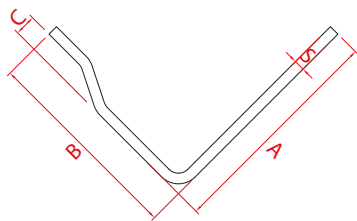
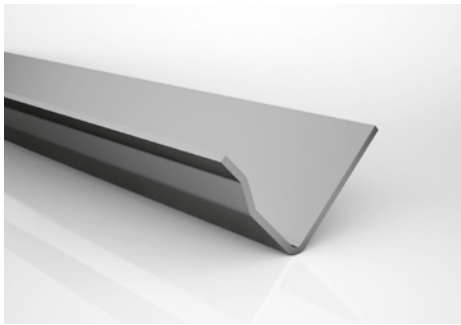
INS-07



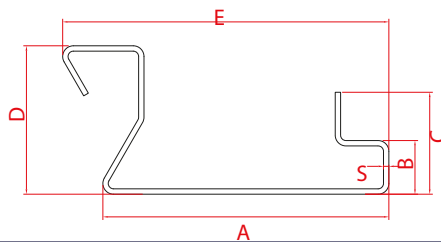
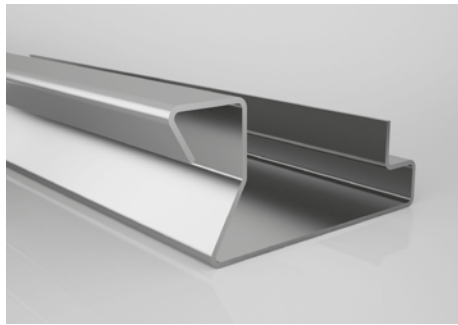
INS-08



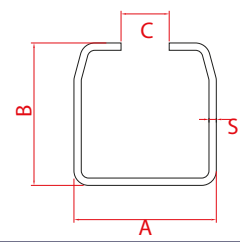
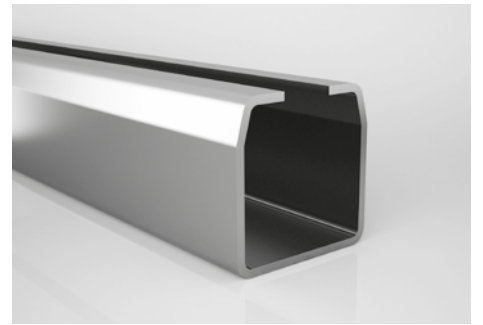
INS-09



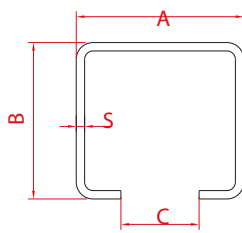
INS-10



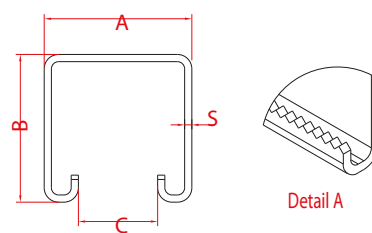
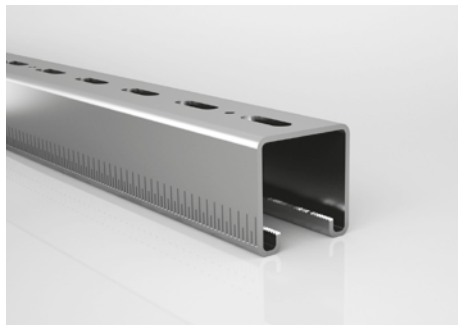
INS-11



INS-12



INS-13



INS-14

